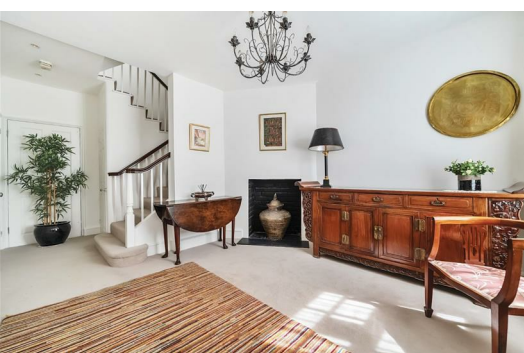




HARDINGS



High Street
Price Guide £1,850,000

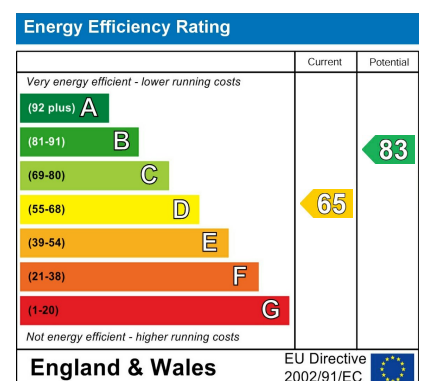




A beautiful Georgian town house containing mixed use premises and occupying a central position on the historic Eton High Street.

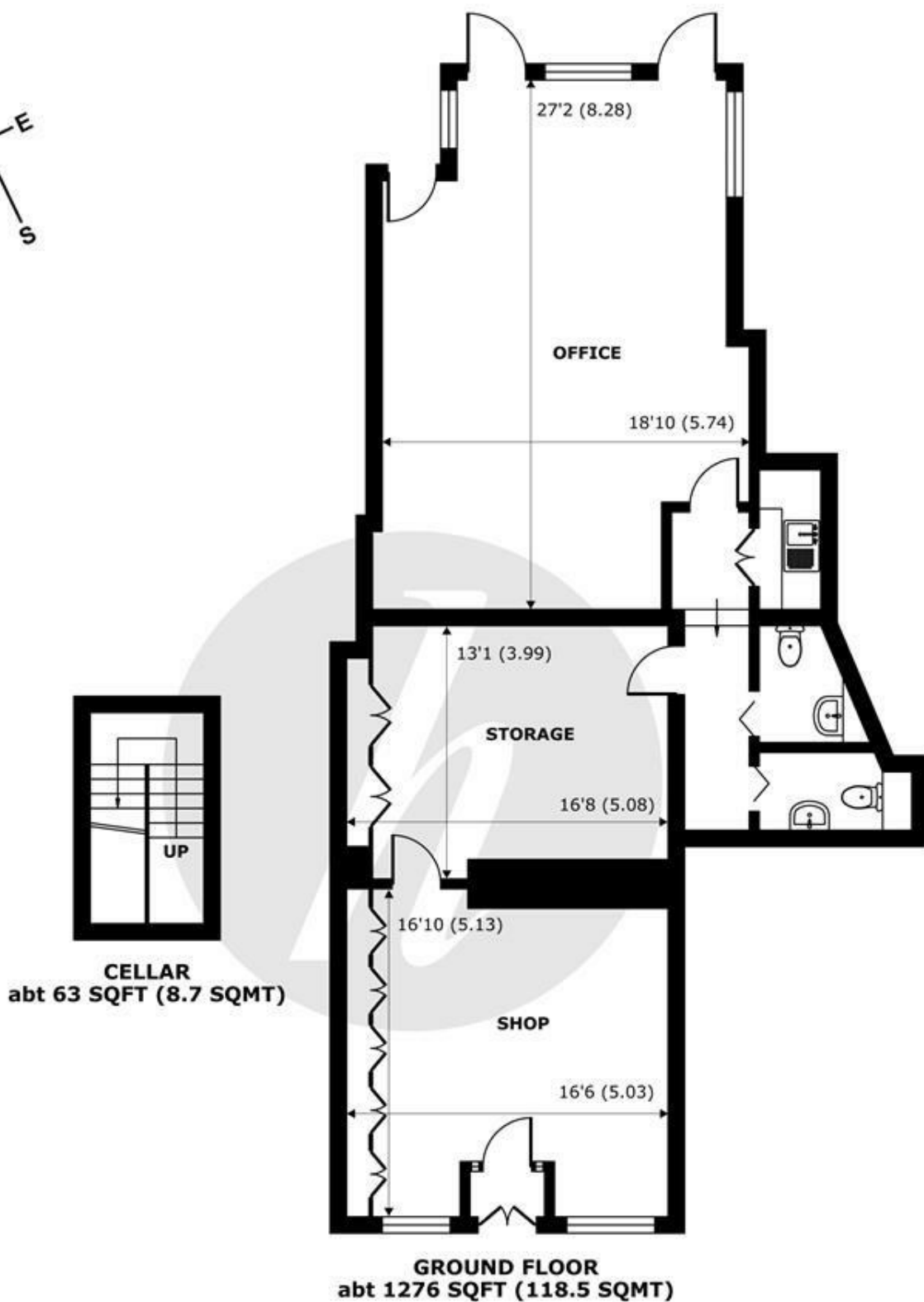
The spacious and elegant residential accommodation arranged over 2 floors; comprising 3 double bedrooms, reception with adjoining study and a fabulous split level kitchen/dining room with direct access onto a sunny roof terrace, further benefits include a low maintenance terraced garden and secure gated parking.

The commercial unit comes with allocated off street parking at the rear of the building



Features

- Mixed Use Investment
- Secure Gated Parking
- Over 3000sqft of Internal Space
- Town House 3 Bedroom Conversion with Own Front Door
- Immaculate Condition
- Georgian Grade 2 Listed Building
- A1 Business
- High Street Location
- Courtyard Garden & Roof Terrace



High Street, Eton, Windsor, SL4

Approximate Internal Area = 1203 sq ft / 111.7 sq m

Approximate External Area = 1370 sq ft / 127.2 sq m

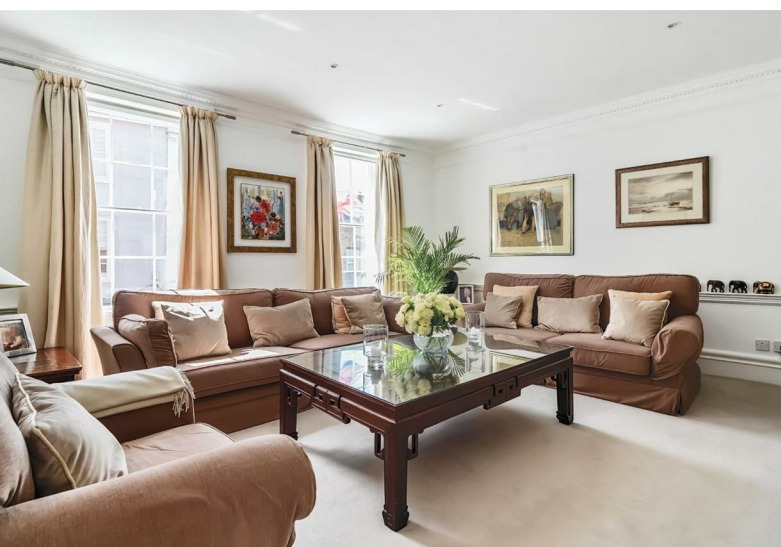
For identification only - Not to scale



Certified
Property
Measurer

Floor plan produced in accordance with RICS Property Measurement Standards incorporating International Property Measurement Standards (IPMS2 Residential). © nichecom 2024. Produced for Hardings. REF: 1150779





11 High Street, Windsor, Berkshire, SL4 1LD,
T: 01753 833 118 | E: info@hardings.co.uk
www.hardings.co.uk

