



HARDINGS



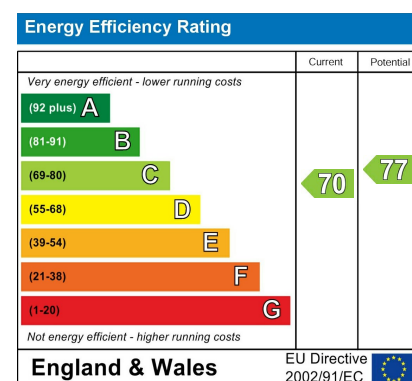
William Ellis Close
Guide Price £550,000





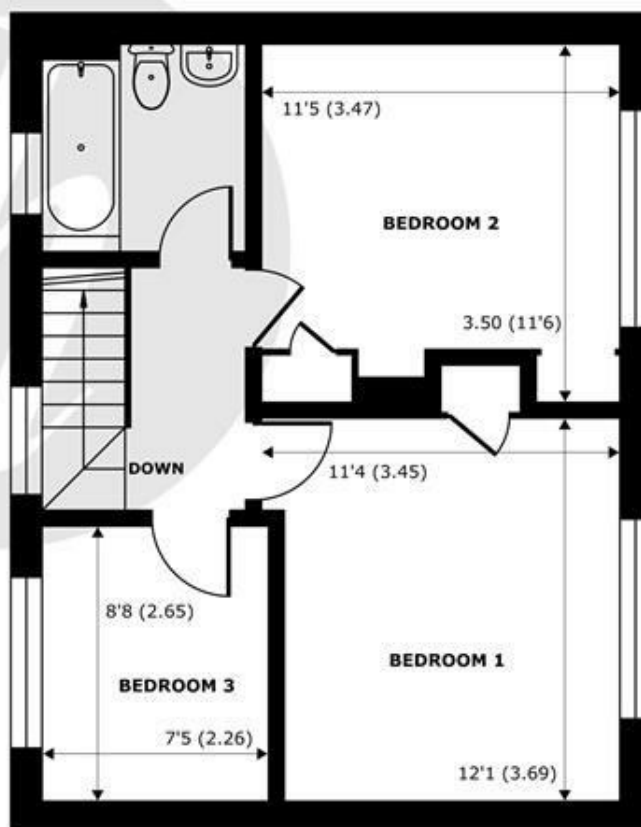
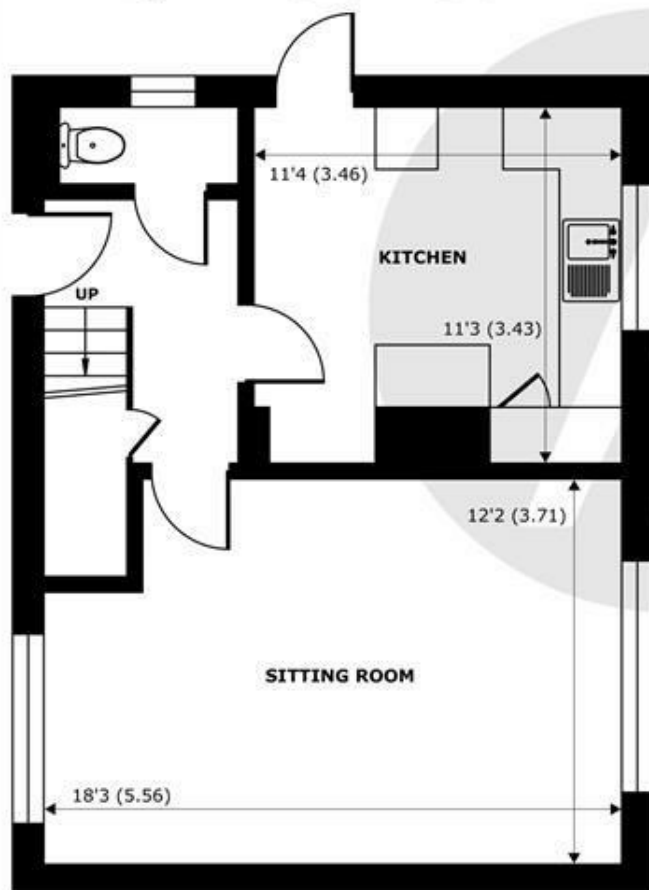
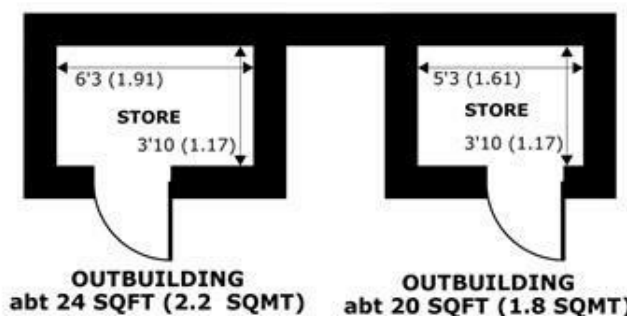
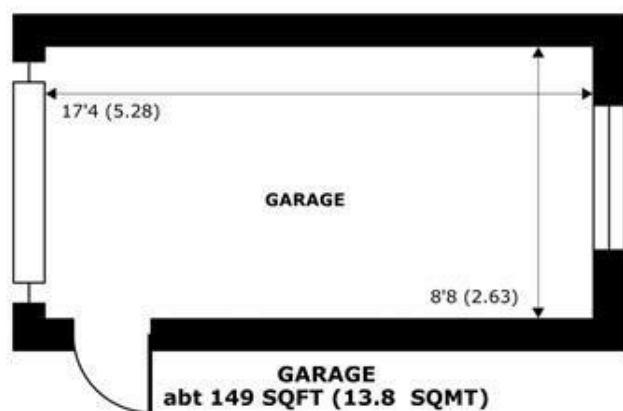
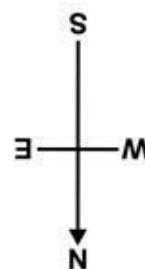
A well-presented three bedroom home occupying a generous corner plot in a quiet and sought-after location, offering excellent space both inside and out. The property is maintained in good condition throughout and provides fantastic potential to extend (STPP) for buyers looking to add value in the future.

Further benefiting from a garage, outbuildings and no onward chain.



Features

- Three Bedrooms
- Good Condition Throughout
- Downstairs WC
- No Onward Chain
- Quiet Location
- Large Corner Plot
- Potential to Extend (STPP)
- Garage
- Family Bathroom



William Ellis Close, Old Windsor, Windsor, SL4

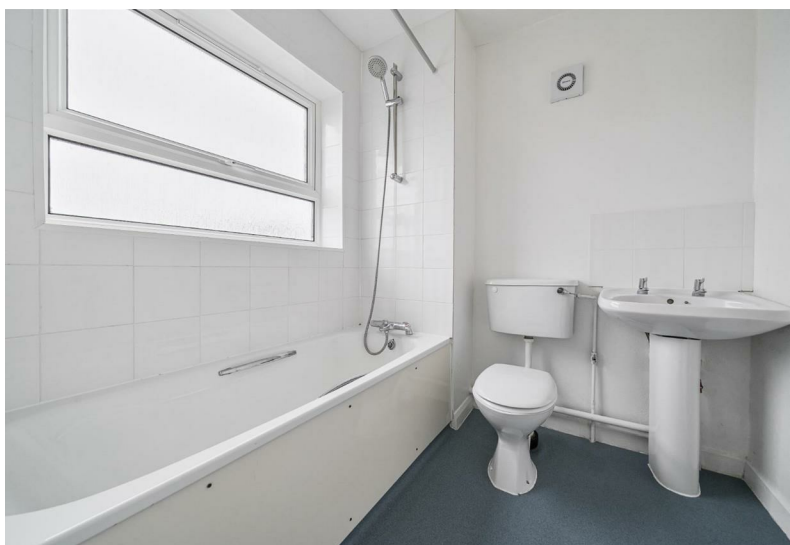
Approximate Internal Area = 872 sq ft / 81 sq m (Exclude Garage & Outbuildings)
Approximate External Area = 1046 sq ft / 97.1 sq m (Exclude Garage & Outbuildings)

For identification only - Not to scale



Floor plan produced in accordance with RICS Property Measurement 2nd Edition,
Incorporating International Property Measurement Standards (IPMS2 Residential). © nichecom 2025.
Produced for Hardings. REF: 1387446





11 High Street, Windsor, Berkshire, SL4 1LD,
T: 01753 833 118 | E: info@hardings.co.uk
www.hardings.co.uk

