



HARDINGS

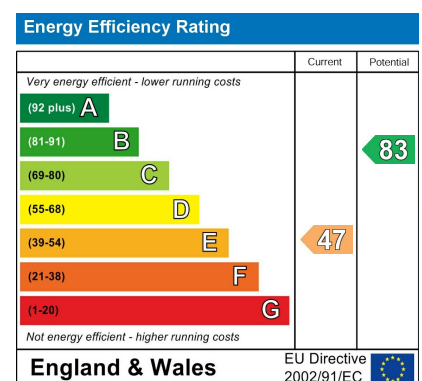


Vansittart Road
£2,750 Per Month



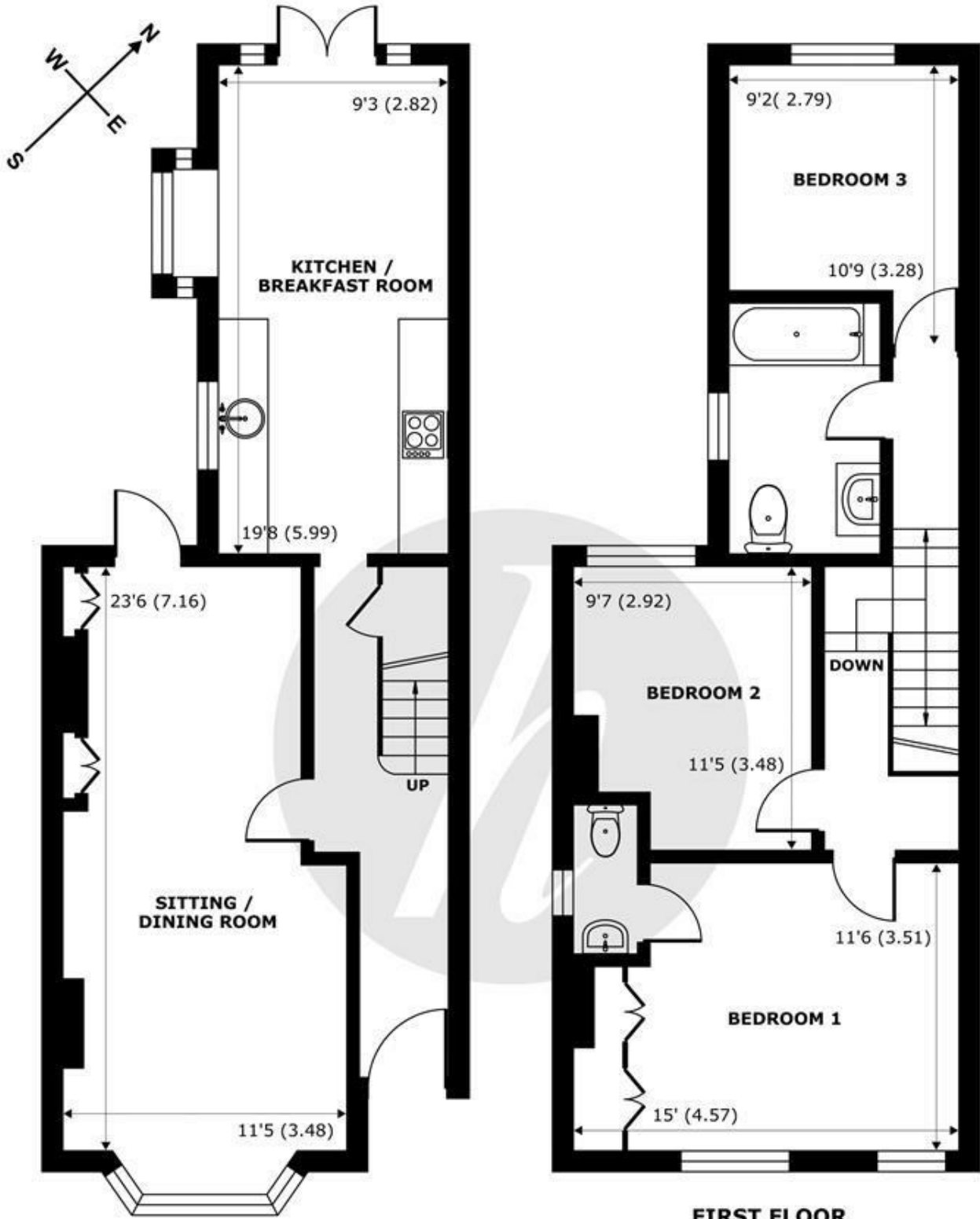


A delightful three bedroom detached house situated in a sought after road in central Windsor. Offering excellent access to Windsor's shops, bars, restaurants and two train stations this property comprises entrance hall, living/dining room, kitchen/breakfast room, three bedrooms (one with en-suite WC) and family bathroom. Pretty garden with patio. On-street permit parking. Unfurnished. Council Tax Band E. EPC:E.



Features

- Three bedroom house
- Close to town centre
- Victorian features
- Open plan kitchen/diner
- Detached
- Offered unfurnished
- Permit parking
- Tax Band E & EPC E



GROUND FLOOR
 abt 664 SQFT (61.7 SQMT)

FIRST FLOOR
 abt 652 SQFT (60.6 SQMT)

Vansittart Road, Windsor, SL4

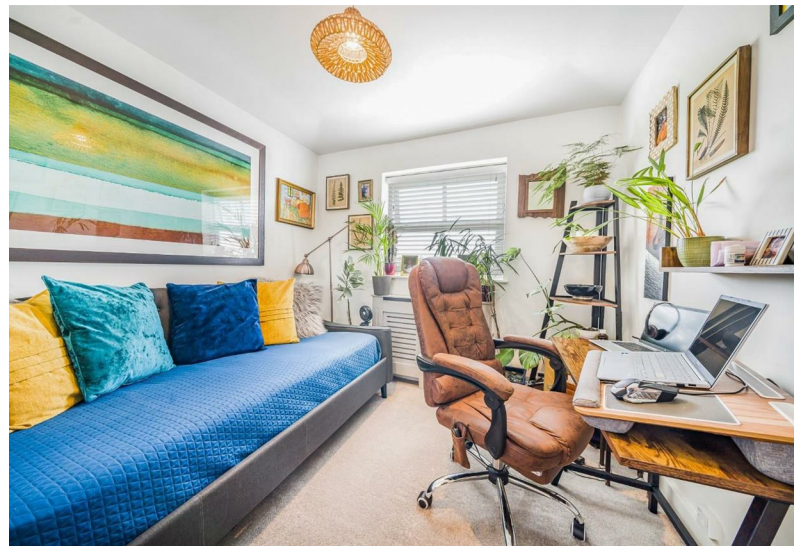
Approximate Internal Area = 1109 sq ft / 103 sq m
 Approximate External Area = 1316 sq ft / 122.2 sq m

For identification only - Not to scale



Floor plan produced in accordance with RICS Property Measurement Standards incorporating International Property Measurement Standards (IPMS2 Residential). © nichecom 2023. Produced for Hardings. REF: 976383





11 High Street, Windsor, Berkshire, SL4 1LD,
T: 01753 833 118 | E: info@hardings.co.uk
www.hardings.co.uk

