



**HARDINGS**

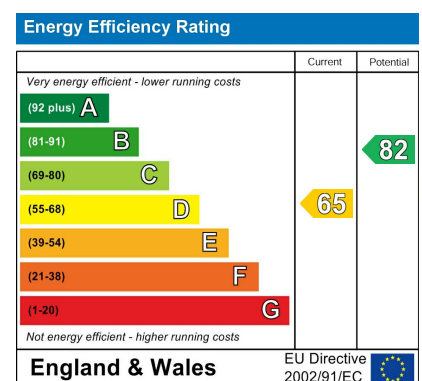


Victoria Road  
£2,200 Per Month





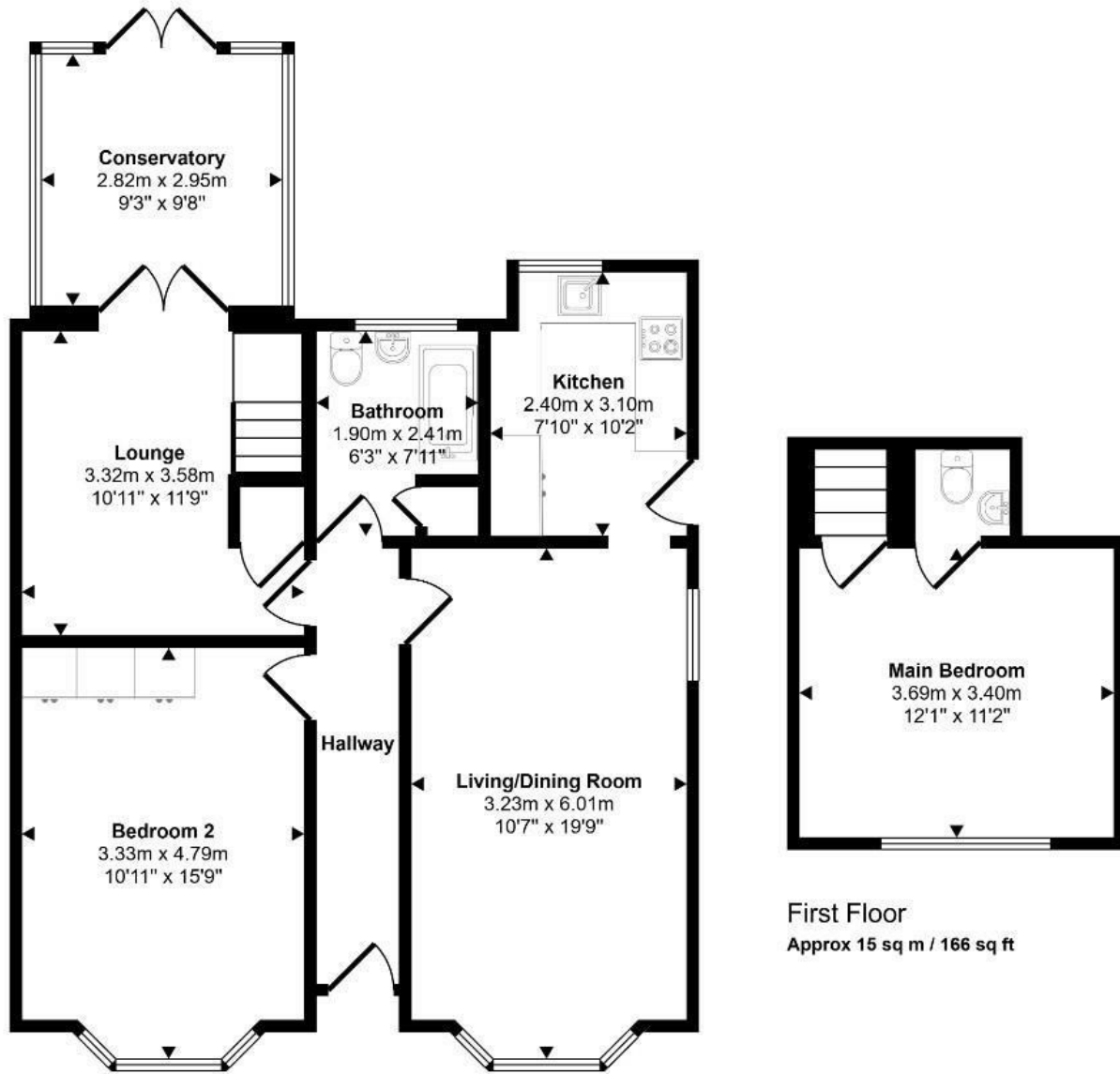
A well presented, spacious two bedroom bungalow situated in popular Eton Wick. The property comprises entrance hall, two reception rooms, kitchen, two double bedrooms (one with en-suite cloakroom) and bathroom. Pretty rear garden and patio. Driveway. Unfurnished. EPC:D. Council Tax Band E.



## Features

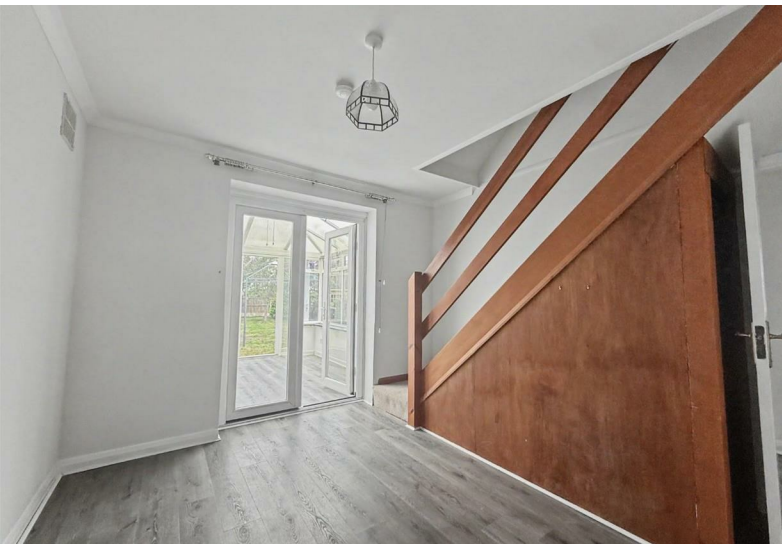
- Spacious Two Bedroom Bungalow
- Delightful Garden with Patio
- Council Tax Band E
- Private Driveway Parking
- Unfurnished
- EPC:D

Approx Gross Internal Area  
91 sq m / 976 sq ft



Ground Floor  
Approx 75 sq m / 811 sq ft

This floorplan is only for illustrative purposes and is not to scale. Measurements of rooms, doors, windows, and any items are approximate and no responsibility is taken for any error, omission or mis-statement. Icons of items such as bathroom suites are representations only and may not look like the real items. Made with Made Snappy 360.



11 High Street, Windsor, Berkshire, SL4 1LD,  
T: 01753 833 118 | E: [info@hardings.co.uk](mailto:info@hardings.co.uk)  
[www.hardings.co.uk](http://www.hardings.co.uk)

