

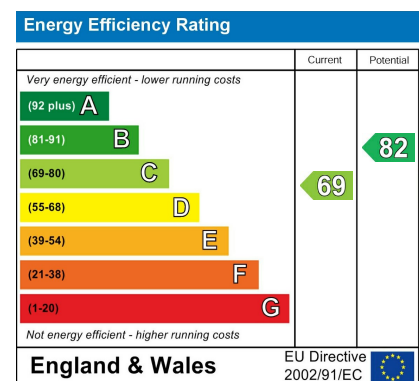


Grove Road
Price Guide £1,350,000



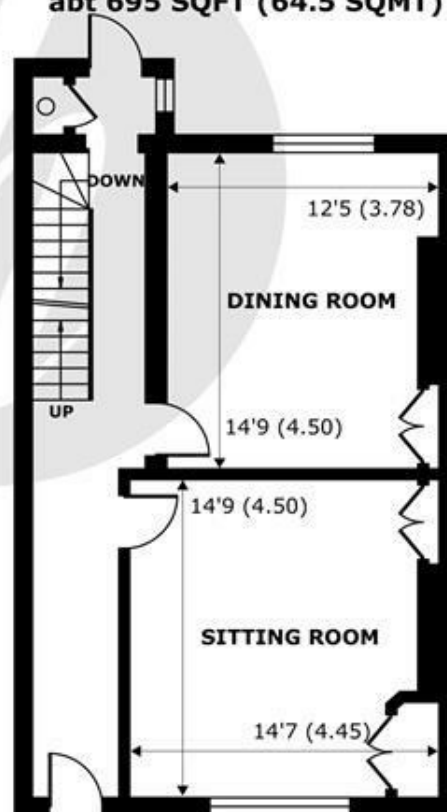
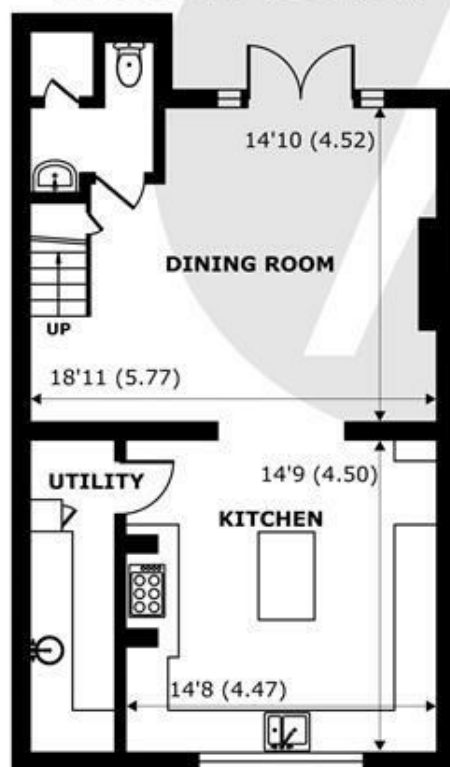
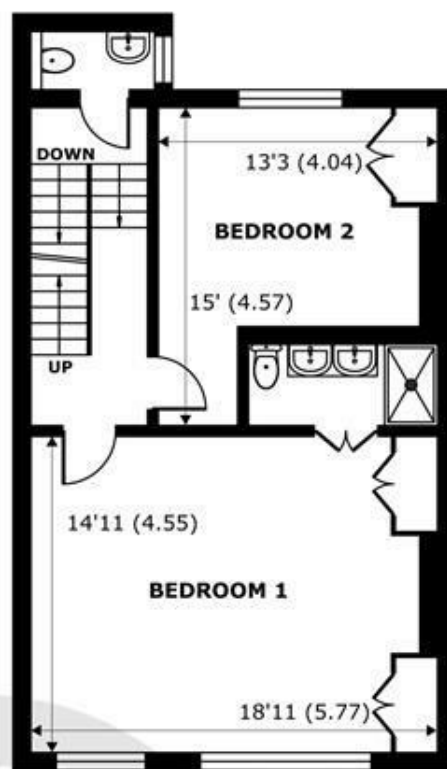
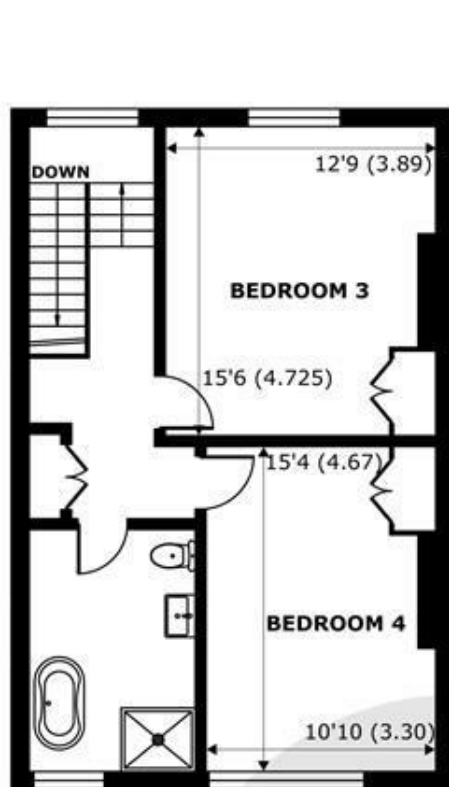
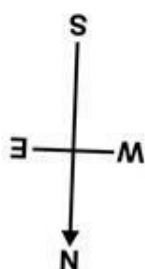


An elegant 4 bedroom terraced townhouse located on a prime residential street in the heart of Windsor, just a short walk to local amenities, Windsor Castle & the Long Walk and mainline rail links to London (Waterloo & Paddington). Showcasing impressively high ceilings, well proportioned rooms and an array of original features, the property further benefits from a south facing garden, eat in kitchen and utility room and enviable principle bedroom replete with en-suite bathroom and fitted wardrobes.NO CHAIN.



Features

- 4 Bedroom Terraced Townhouse
- High Ceilings
- South Facing Garden
- Cloakroom
- Permit Parking
- Period Features
- Kitchen/Breakfast Room
- Utility Room
- Prime Residential Street in Windsor Town Centre
- Impressive Principal Bedroom with En-suite Bathroom.



Grove Road, Windsor, SL4

Approximate Internal Area = 2395 sq ft / 222.5 sq m

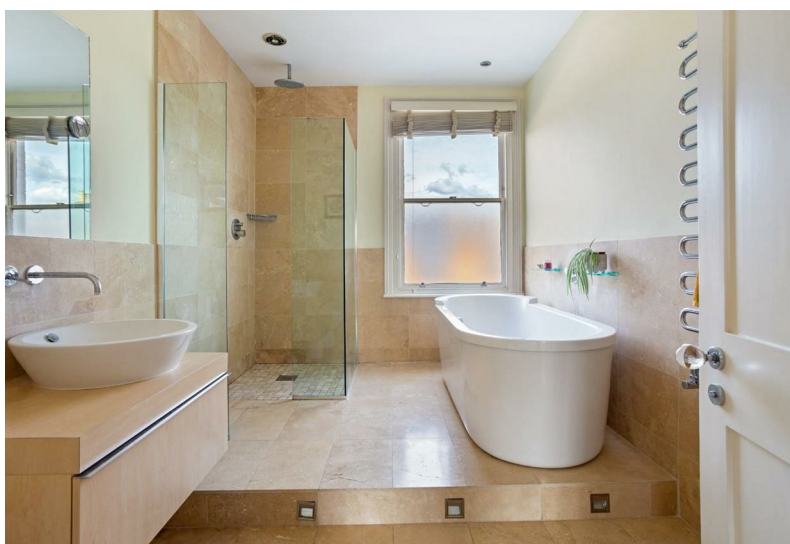
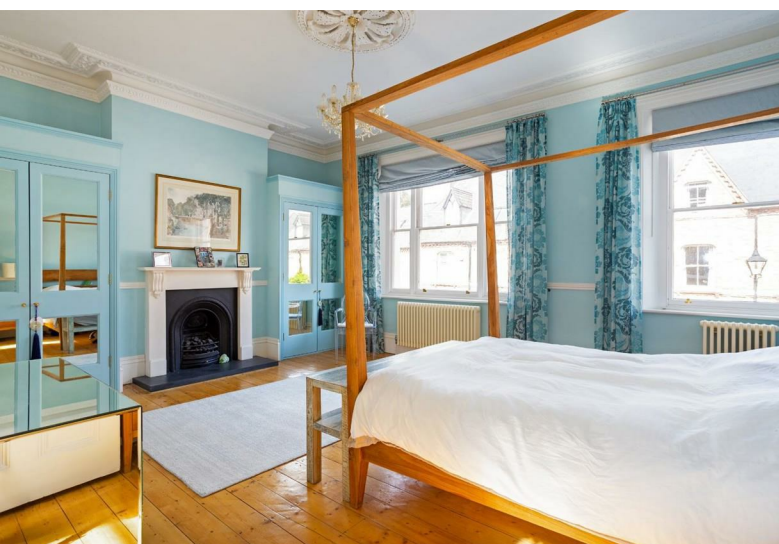
Approximate External Area = 2735 sq ft / 254 sq m

For identification only - Not to scale



Floor plan produced in accordance with RICS Property Measurement Standards incorporating International Property Measurement Standards (IPMS2 Residential). © nichecom 2023. Produced for Hardings. REF: 962728





11 High Street, Windsor, Berkshire, SL4 1LD,
T: 01753 833 118 | E: info@hardings.co.uk
www.hardings.co.uk

