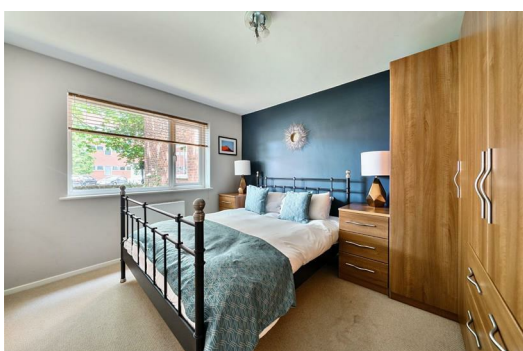




HARDINGS



Alma Road
Offers Over £300,000

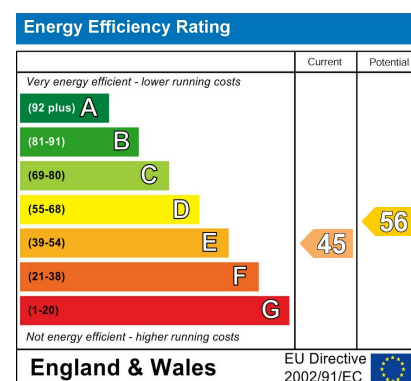




This well-presented and spacious two-bedroom ground floor apartment is ideally located just a short distance from the heart of Windsor Town Centre, offering easy access to a wide range of shops, restaurants, and excellent transport links.

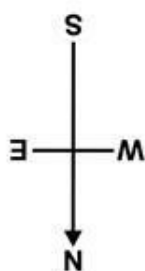
The property boasts a generous dual-aspect reception and dining room, alongside a separate modern kitchen equipped with contemporary fittings and ample storage.

Additional benefits include gated off-street parking and no onward chain.

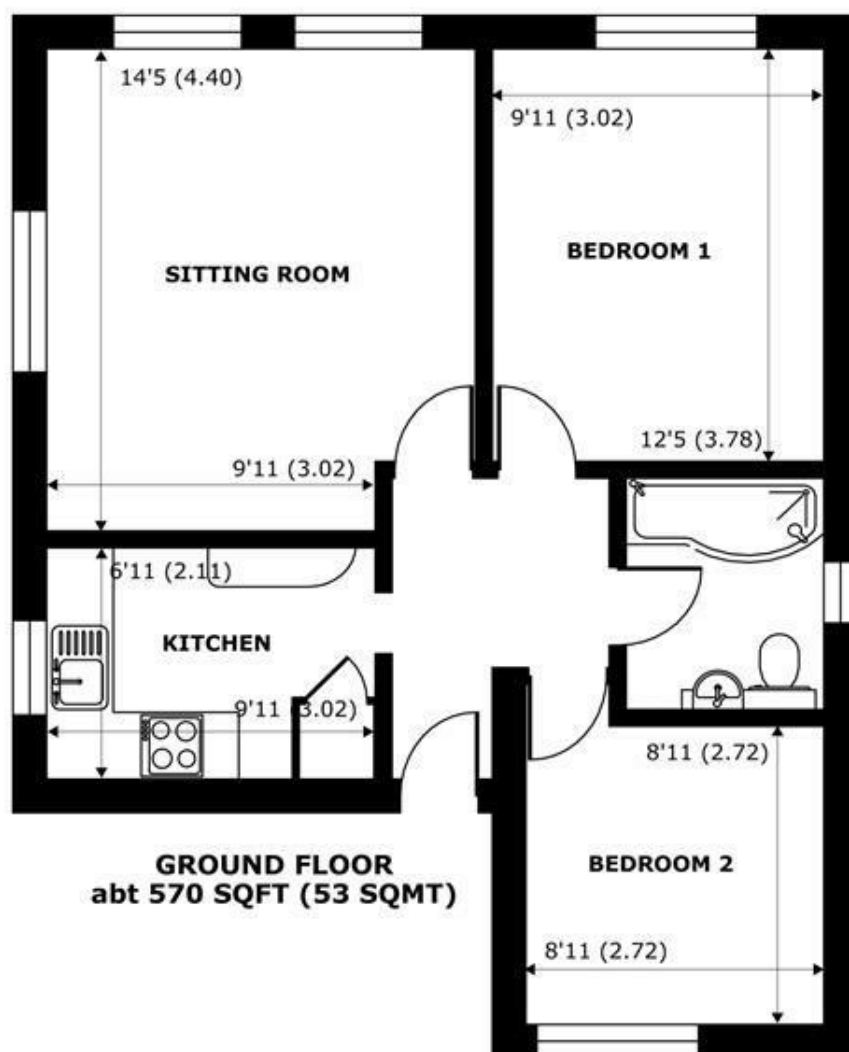


Features

- Two Bedroom Apartment
- Modern Separate Kitchen
- No Onward Chain
- Moments from Town Centre
- Gated Off Street Parking
- Share of Freehold
- Immaculate Condition Throughout
- Dual Aspect Reception Diner



Denotes restricted
head height



Lawrence Court, Alma Road, Windsor, SL4

Approximate Internal Area = 570 sq ft / 53 sq m

Approximate External Area = 678 sq ft / 63 sq m

For identification only - Not to scale



Floor plan produced in accordance with RICS Property Measurement 2nd Edition,
Incorporating International Property Measurement Standards (IPMS2 Residential). © nichecom 2025.
Produced for Hardings. REF: 1294079





11 High Street, Windsor, Berkshire, SL4 1LD,
T: 01753 833 118 | E: info@hardings.co.uk
www.hardings.co.uk

