



# HARDINGS



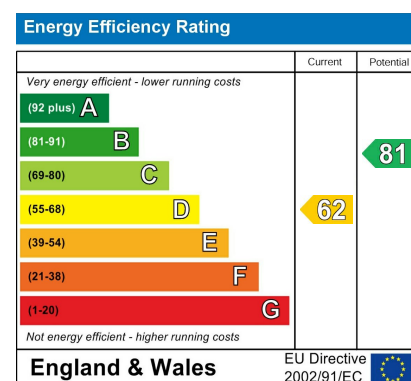
Vansittart Road  
Price Guide £825,000





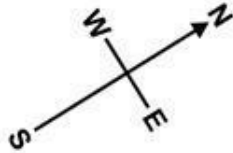


A beautifully presented four bedroom bay fronted period villa occupying a central location, just a short walk to the shops, restaurants and cafes in Windsor town centre, the River Thames, both mainline rail stations (Waterloo & Paddington) and Eton. Remodelled and extended to create an eat in-kitchen and two bedrooms in the loft, the property also benefits from a spacious west facing garden.

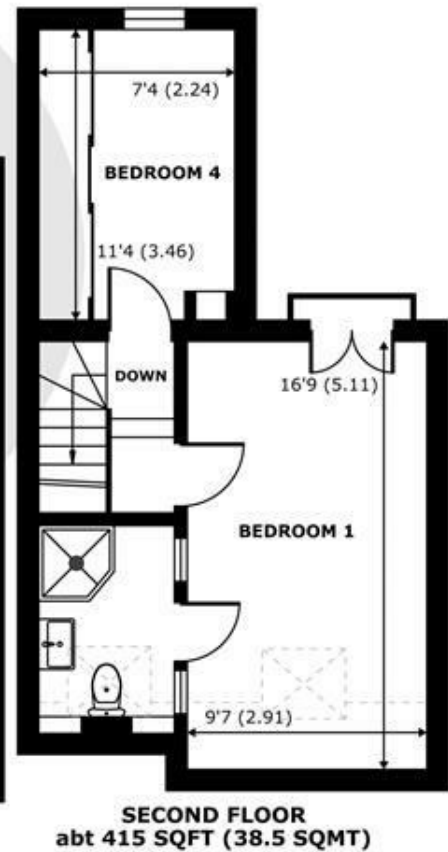
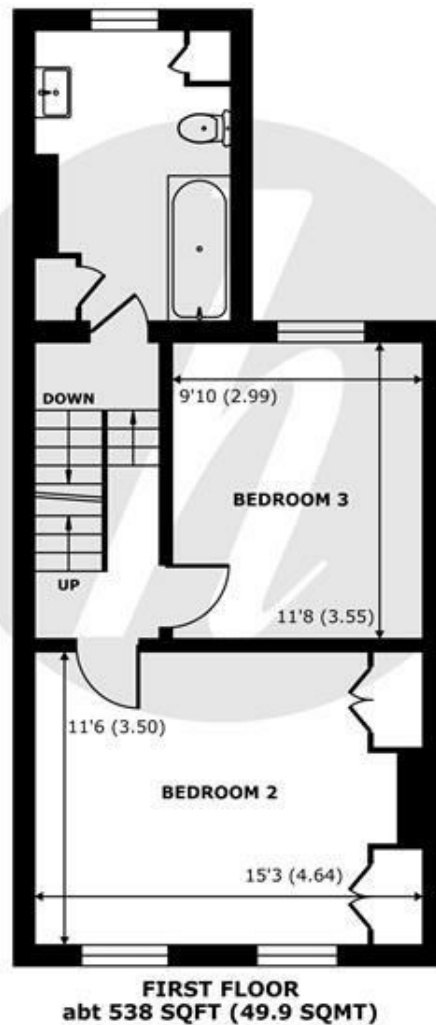
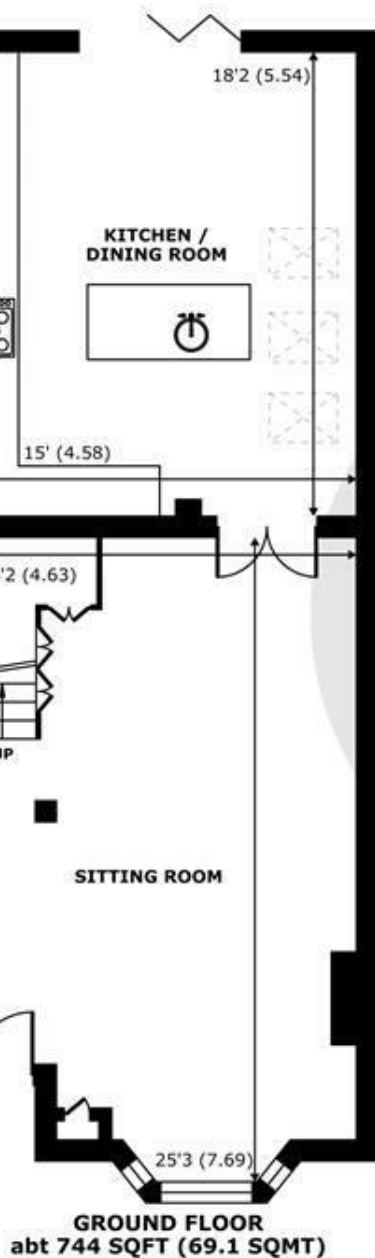


## Features

- Beautifully Presented 4 Bedroom Home
- Spacious Front Sitting Room With Period Features
- Short Walk to Windsor Town Centre and Rail Links to London
- Close to the River and Eton
- Eat In Kitchen
- Bi-Fold Doors onto West Facing Garden
- 2 Bathrooms
- Bay Fronted Windows



Denotes restricted  
head height



## Vansittart Road, Windsor, SL4

Approximate Internal Area = 1378 sq ft / 128 sq m  
Approximate External Area = 1697 sq ft / 157.6 sq m  
Limited Use Area(s) = 32 sq ft / 2.9 sq m

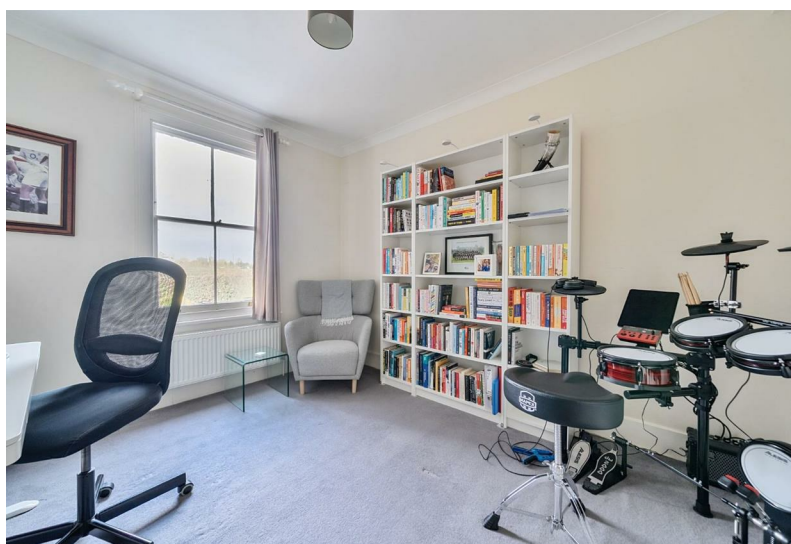
For identification only - Not to scale



Floor plan produced in accordance with RICS Property Measurement 2nd Edition,  
Incorporating International Property Measurement Standards (IPMS2 Residential). © nichecom 2025.  
Produced for Hardings. REF: 1256950







11 High Street, Windsor, Berkshire, SL4 1LD,  
T: 01753 833 118 | E: [info@hardings.co.uk](mailto:info@hardings.co.uk)  
[www.hardings.co.uk](http://www.hardings.co.uk)

