



HARDINGS



Copper Horse Court
Asking Price £850,000





Situated within the exclusive Copper Horse Court, just off Hatch Lane, this well-presented four-bedroom semi-detached home offers spacious and versatile accommodation, ideal for modern family living.


The property is set within a private gated development and features a generous layout, including a spacious reception/dining room and a well-appointed eat-in kitchen. There are four bedrooms served by four bathrooms, along with the added convenience of a downstairs cloakroom.

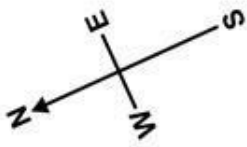
Externally, the house benefits from an attractive private garden, with side access, as well as allocated resident parking within the development and visitor parking all within the immaculate development.

The property is offered in good condition throughout & with generous built in storage, and it is ideally located within close proximity to a number of well-regarded local schools, as well as being within easy reach of Windsor Town Centre and its excellent range of amenities and transport links.

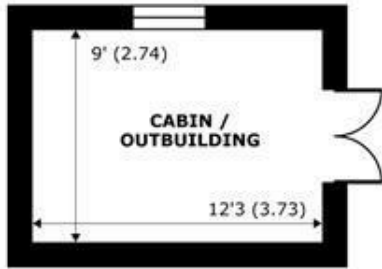
Features

- Four Bedroom Semi-Detached Home
- Ample Off Street Resident Parking
- Spacious Reception/ Dining Room
- Side Access
- Close Proximity to Good Local Schools
- Private Gated Development
- Eat in Kitchen
- Four Bathrooms & Downstairs Cloakroom
- Attractive Private Garden
- Good Condition Throughout

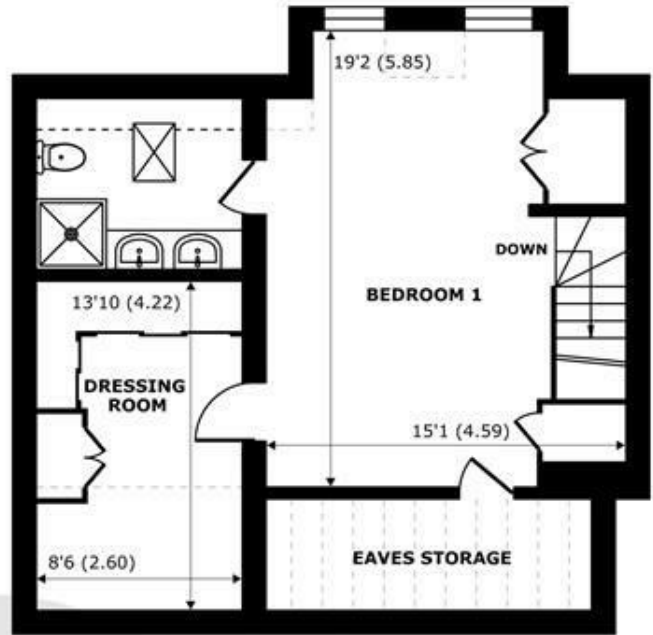
Energy Efficiency Rating		Current	Potential
<i>Very energy efficient - lower running costs</i>			
(92 plus) A			
(81-91) B			
(69-80) C		80	83
(55-68) D			
(39-54) E			
(21-38) F			
(1-20) G			
<i>Not energy efficient - higher running costs</i>			
England & Wales		EU Directive 2002/91/EC 	



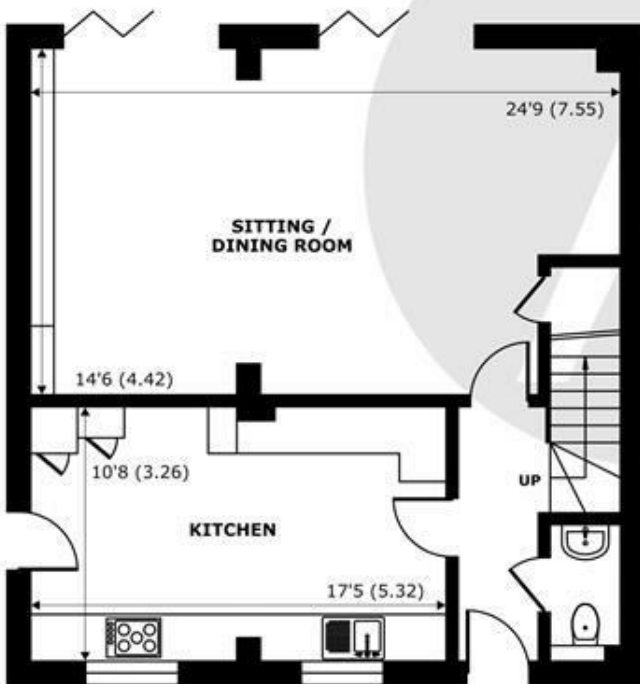
Denotes restricted head height



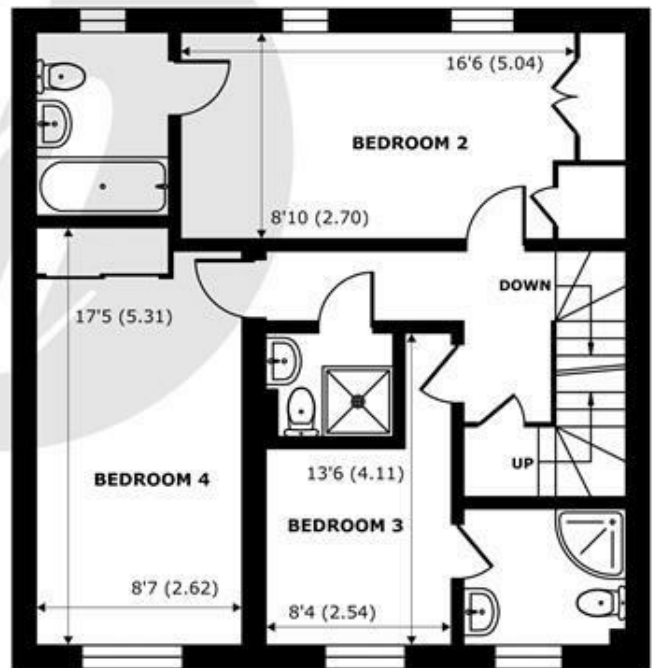
OUTBUILDING
abt 156 SQFT (14.4 SQMT)



SECOND FLOOR
abt 653 SQFT (60.6 SQMT)



GROUND FLOOR
abt 741 SQFT (68.8 SQMT)



FIRST FLOOR
abt 741 SQFT (68.8 SQMT)

Copper Horse Court, Windsor, SL4

Approximate Internal Area = 1683 sq ft / 156.3 sq m

Cabin / Outbuilding = 110 sq ft / 10.2 sq m

Limited Use Area(s) = 146 sq ft / 13.5 sq m

Total = 1793 sq ft / 166.5 sq m

Approximate External Area = 2291 sq ft / 212.8 sq m

For identification only - Not to scale



Floor plan produced in accordance with RICS Property Measurement 2nd Edition, Incorporating International Property Measurement Standards (IPMS2 Residential). © nichecom 2026. Produced for Hardings. REF: 1449397





11 High Street, Windsor, Berkshire, SL4 1LD,
T: 01753 833 118 | E: info@hardings.co.uk
www.hardings.co.uk

