

22 Brigadier Way
Weldon, Corby
Northamptonshire
NN17 3NA

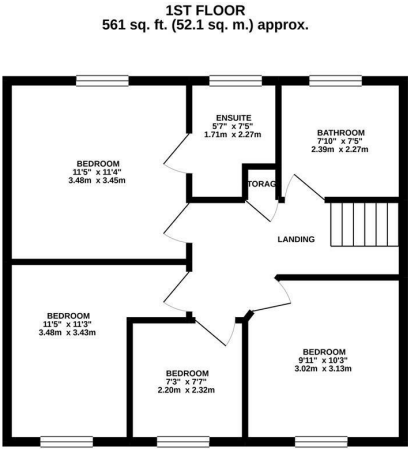
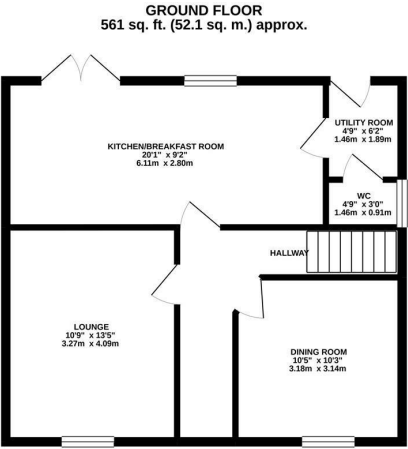
£275,000



OSCAR JAMES

...expect excellence

FLOOR PLANS



TOTAL FLOOR AREA: 1122 sq. ft. (104.2 sq. m.) approx.
Whilst every attempt has been made to ensure the accuracy of the floorplan contained here, measurements of doors, windows, rooms and any other items are approximate and no responsibility is taken for any error, omission or mis-statement. This plan is for illustrative purposes only and should be used as such by any prospective purchaser. The services, systems and appliances shown have not been tested and no guarantee as to their operability or efficiency can be given.
Made with Metrepx ©2020



AT A GLANCE...



Two separate reception rooms



A gorgeous kitchen breakfast



Four well proportioned bedrooms



Family bathroom and en-suite shower room



Open plan front garden and enclosed rear garden with patio



Single garage and off road parking to rear



WHAT'S GREAT?

Offered to the market in fantastic order throughout and benefiting from countryside views to the front is this four bedroom detached family home built in stone by Persimmon Homes.

Only several months old and being marketing in show house condition, this home offers versatile accommodation which includes a spacious entrance hall, a formal dining room, separate sitting room, a fantastic kitchen breakfast room with French doors to the garden, a utility room and a guest WC.

The first floor benefits from four well proportioned bedrooms, master with an en-suite shower room and a family bathroom.

To the outside, expect to find an open plan front garden giving access to the entrance door. The rear has an enclosed garden with patio (please note that the garden is in need of further landscaping). There is gated access to the rear which leads to off road parking and a single garage.

An early viewing must be sought to fully appreciate this lovely home.

...expect excellence



SELLER'S SECRET

Weldon is a beautiful village with some great walking places for you and the dogs. The house that I live in is probably one of the best plots on Weldon park with scenery of fields and a green belt in front. The garden is private with no one over looking and a private road. Very quiet and great for anyone that was a tranquil life.



Why we like it....

This is such a good house sitting with in the ever popular village of Weldon, with views overlooking a green area to the front and far reaching countryside. A fantastic layout with versatile accommodation which must be viewed.

To buy or not to buy....

OSCAR JAMES

13 New Post Office Square | Corby | NN17

1PB

01536 400900

www.oscar-james.com