



FOX 
TOWN &
COUNTRY
HOMES

Ombersley Way

Droitwich |

FOX 
TOWN &
COUNTRY
HOMES

Ombersley Way, Droitwich,

- Elegant two-bedroom apartment set within a prestigious Grade I listed historic building
- Surrounded by beautifully maintained parkland, offering a peaceful and picturesque setting
- Stylish, high-end kitchen with quality finishes and modern appliances
- Spacious open-plan sitting room featuring a formal dining area – ideal for entertaining
- Contemporary, modernised bathroom designed with comfort and style in mind
- Newly fitted secondary glazing throughout, enhancing comfort and energy efficiency
- Includes a private single garage along with additional parking facilities

A fantastic opportunity to acquire a fabulous Apartment that is situated in the Historic Grade I Westwood House. Previously owned by the Pakington Family and used as King Henry VIII's Shooting Lodge; the history is stupendous, and it certainly shows in the architecture of the property, with signature high ceilings and ornate woodwork, giving a sense of grandeur and luxury.





Set in the heart of parkland and woodland this Apartment really has the sense of seclusion in the Countryside whilst only a few miles away from the market town of Droitwich and Worcester City Centre. This beautiful apartment is approached from stone steps leading from the gravelled driveway. Immediately, the sense of grandeur and magnificence greets you as you enter the hallway with the feature staircase leading to the apartments. Situated on the first floor, stairs lead you to the ornate doorway that leads into a beautifully specified fitted Kitchen with views over the rolling land and gardens.

Refurbished to a high standard, the Kitchen comprises of worktops, hardwood floors and integral appliances. The location of the sink means that no one will ever complain about doing the dishes again, with views out onto the parkland and Worcestershire Countryside.

Beautiful dual aspect windows are a main feature in the living room and benefit from newly installed secondary glazing. The feature fireplace and panelled walls add to the wealth of period features whilst still allowing enough space for a formal dining area also. Moving through this spacious apartment, you find the master suite to be of the highest quality with two sets of bespoke fitted wardrobes and the grandeur of high ceilings and dual aspect windows.



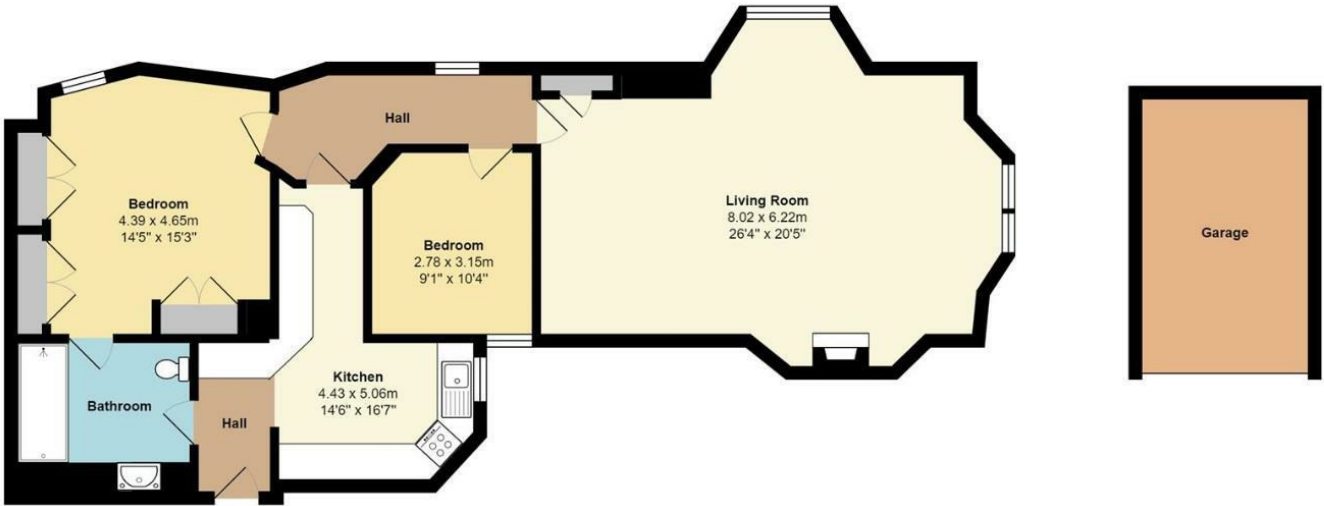


The Master Suite has the benefit of a modernised bathroom with walk in shower and vanity unit. Benefitting from being fully tiled, it is very similar to that of a wet room.

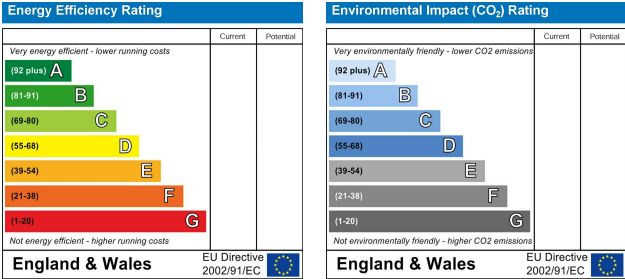




Westwood House, Westwood Park, Droitwich, WR9 0AD



Total Approx Area: 93.4 m² ... 1005 ft² (excluding garage)
All measurements of doors, windows, rooms are approximate and for display purposes only.
No responsibility is taken for any error, omission or mis-statement.
The services, systems and appliances shown have not been tested and no guarantee as to the operability or efficiency can be given.



Tel: 01684 210950 or 01905 947640
contact@foxtownandcountryhomes.co.uk
39, Worcester Road, Malvern, Worcestershire, WR14 4RB
www.foxtownandcountryhomes.co.uk

