

# Harper & Co

Estate Agents Ltd

<https://www.harperandcoestateagents.co.uk>



## Downside Road

Acklam, Middlesbrough, TS5 4QT

Extended Family Home | Versatile Living Accommodation | Sought After Acklam Location

Situated Within A Popular Residential Area Of Acklam, Middlesbrough, This Extended Family Home Offers Spacious And Flexible Accommodation Ideal For Growing Families, First Time Buyers Or Those Seeking Additional Living Space.

**£160,000**

# Downside Road

Acklam, Middlesbrough, TS5 4QT



- Extended Family Home In A Popular Acklam Location
- Fitted Appliances And Separate Utility Area
- Additional Bedroom Providing Access To The Loft Room
- Driveway Providing Off Road Parking For Multiple Vehicles
- Spacious Lounge With Bay Window And Electric Fire
- Ground Floor Fully Tiled Bathroom With Skylight
- Versatile Loft Room Benefiting From Skylights
- Open Plan Kitchen/Diner With Breakfast Bar
- Two Well Appointed First Floor Bedrooms
- Enclosed Rear Garden With Patio, Lawn And Pergola

## Full Description

## Location

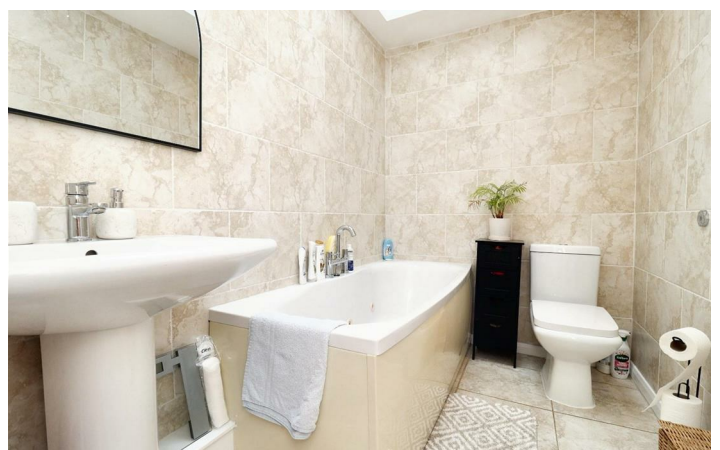
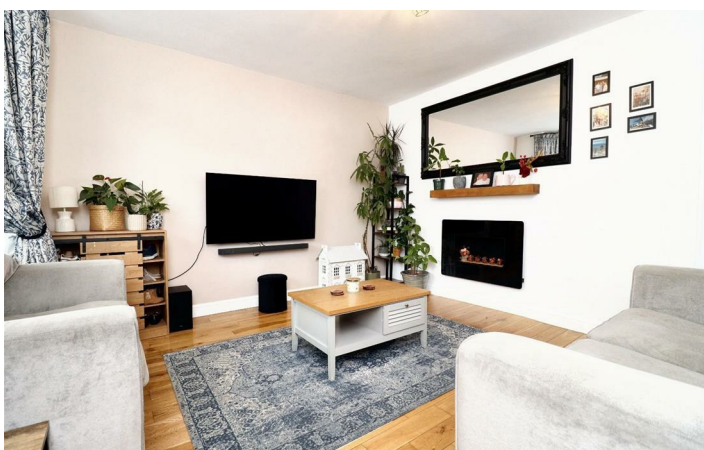
## Note

## Disclaimer

## Money Laundering Notice

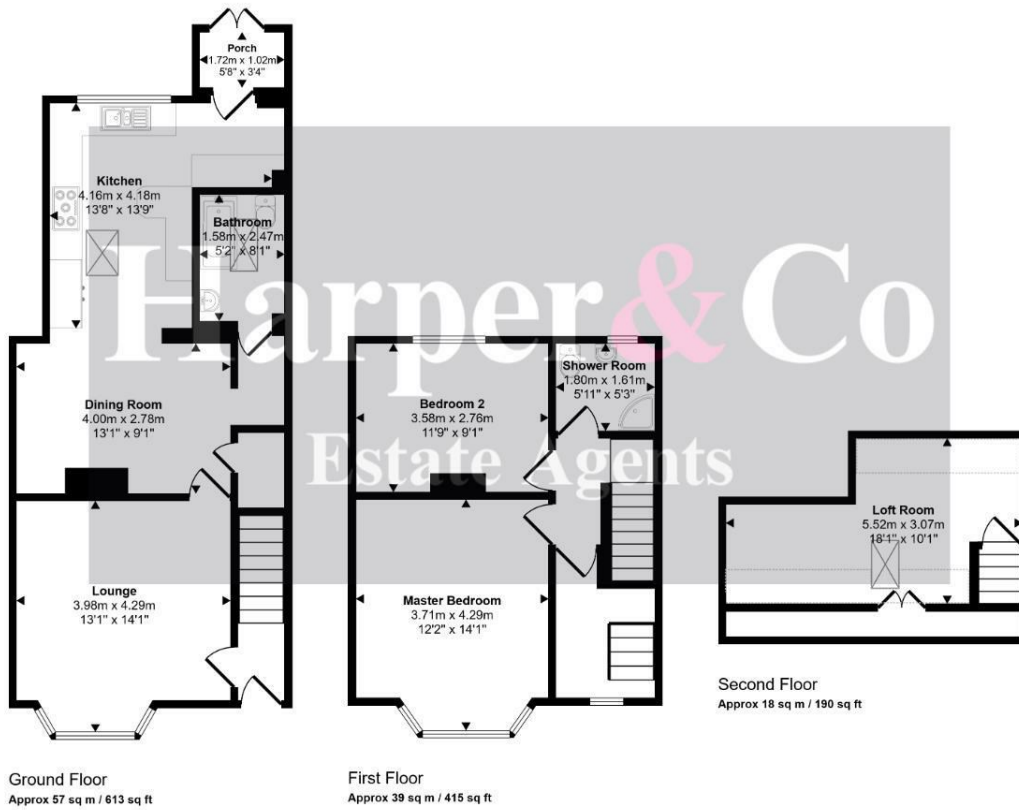


## Directions



# Floor Plan

Approx Gross Internal Area  
113 sq m / 1218 sq ft



Denotes head height below 1.5m

This floorplan is only for illustrative purposes and is not to scale. Measurements of rooms, doors, windows, and any items are approximate and no responsibility is taken for any error, omission or mis-statement. Icons of items such as bathroom suites are representations only and may not look like the real items. Made with Made Snappy 360.

These particulars, whilst believed to be accurate are set out as a general outline only for guidance and do not constitute any part of an offer or contract. Intending purchasers should not rely on them as statements of representation of fact, but must satisfy themselves by inspection or otherwise as to their accuracy. No person in this firm's employment has the authority to make or give any representation or warranty in respect of the property.

