

Harper & Co

Estate Agents Ltd

<https://www.harperandcoestateagents.co.uk>



Chester Road

, Hartlepool, TS24 8FD

Well Presented Three Storey Family Home | Versatile Accommodation | Ready To Move Into
Situated Within A Popular Residential Area Of Hartlepool, This Well Maintained And Spacious Three Storey Family Home Offers Flexible Accommodation Across Three Floors And Is Ready To Move Straight Into.

Offers in the region of £165,000

Chester Road

, Hartlepool, TS24 8FD



- Spacious Three Storey Family Home
- Well Maintained And Ready To Move Into
- Composite Entrance Door And Welcoming Hallway
- Open Plan Kitchen/Diner With French Doors To Rear Garden
- Ground Floor Cloakroom WC
- Generous Main Reception Room
- Four Well Appointed Bedrooms
- Principal Bedroom With En Suite And French Doors
- Private Rear Garden With Patio And Lawn Areas
- Driveway Providing Off Road Parking And Integral Garage

Full Description

Location

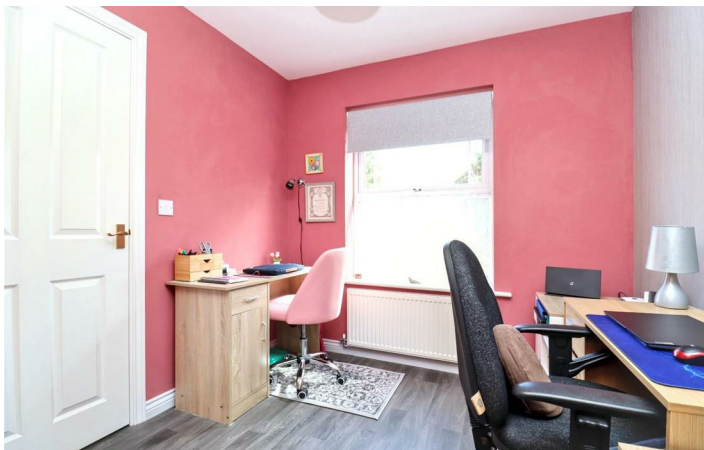
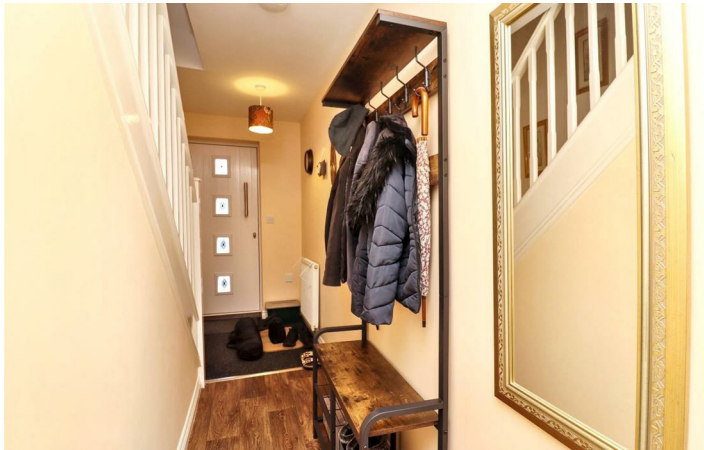
Note

Disclaimer

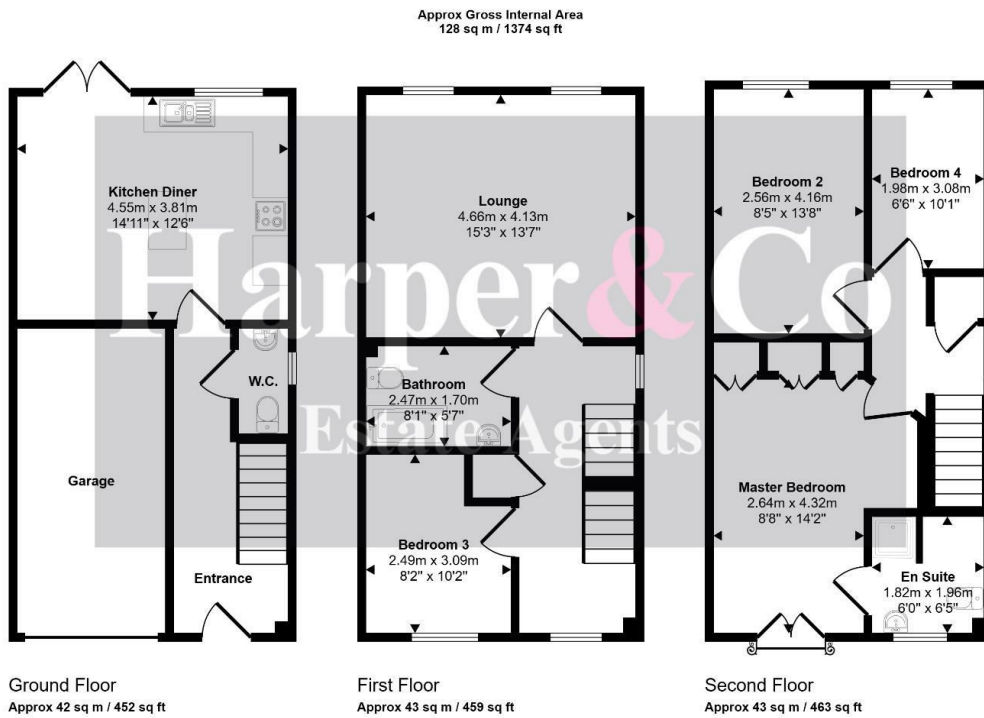
Money Laundering Notice



Directions



Floor Plan



This floorplan is only for illustrative purposes and is not to scale. Measurements of rooms, doors, windows, and any items are approximate and no responsibility is taken for any error, omission or mis-statement. Icons of items such as bathroom suites are representations only and may not look like the real items. Made with Made Snappy 360.

These particulars, whilst believed to be accurate are set out as a general outline only for guidance and do not constitute any part of an offer or contract. Intending purchasers should not rely on them as statements of representation of fact, but must satisfy themselves by inspection or otherwise as to their accuracy. No person in this firm's employment has the authority to make or give any representation or warranty in respect of the property.

