

# Harper & Co

Estate Agents Ltd

<https://www.harperandcoestateagents.co.uk>



## Mill Lane

, Billingham, TS23 1HL

Extended & Fully Refurbished End Of Terrace Family Home | Stunning Open Plan Living | West Facing Garden

Situated Within A Popular Area Of Billingham, This Immaculately Presented Semi Detached Family Home Has Been Extensively Extended, Redesigned And Recently Refurbished Throughout To Create A Stunning Modern Property Finished To An Exceptional Standard.

**£220,000**

# Mill Lane

, Billingham, TS23 1HL



- Extended And Fully Refurbished End Terrace Family Home
- Kitchen With Integrated Appliances, Island And Skylights
- Solid Oak Wood Flooring Throughout The Ground Floor
- Driveway Parking With Open Rear Outlook Across Fields
- Double Storey Extension Plus Full Width Rear Extension
- French Doors Opening Onto The West Facing Rear Garden
- Three Well Appointed Double Bedrooms And Luxury Bathroom
- Stunning Open Plan Kitchen, Dining And Family Space
- Spacious Lounge Featuring A Log Burning Stove
- Private Low Maintenance Garden With Patio And Decking

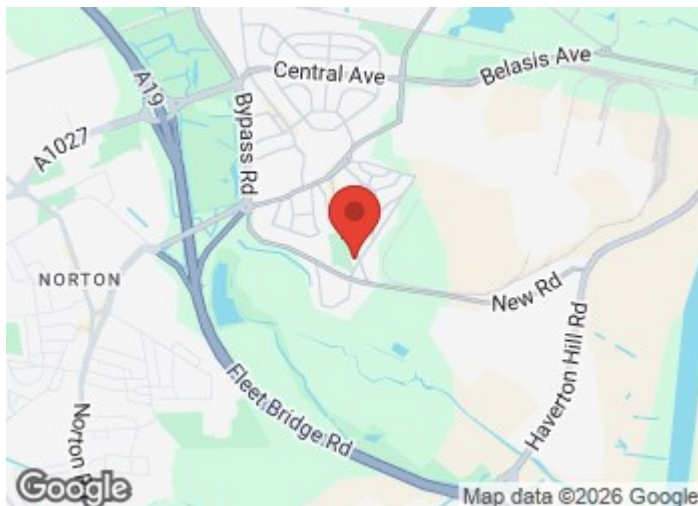
## Full Description

## Location

## Note

## Disclaimer

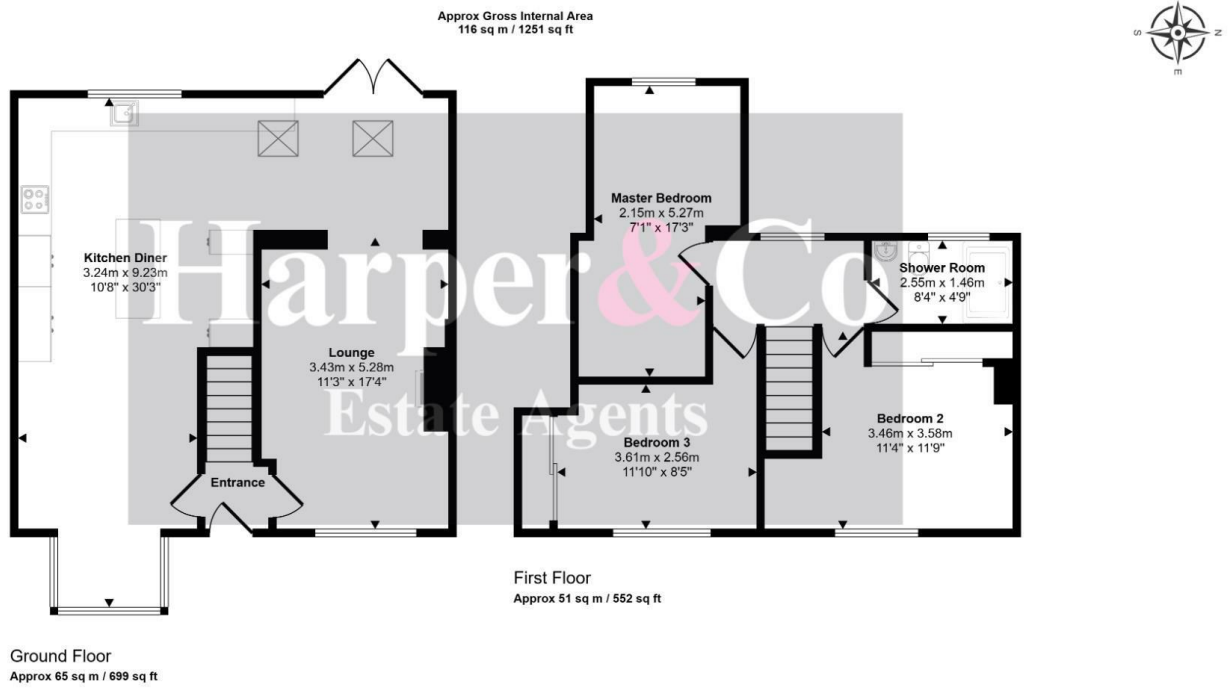
## Money Laundering Notice



## Directions



# Floor Plan



This floorplan is only for illustrative purposes and is not to scale. Measurements of rooms, doors, windows, and any items are approximate and no responsibility is taken for any error, omission or mis-statement. Icons of items such as bathroom suites are representations only and may not look like the real items. Made with Made Snappy 360.

These particulars, whilst believed to be accurate are set out as a general outline only for guidance and do not constitute any part of an offer or contract. Intending purchasers should not rely on them as statements of representation of fact, but must satisfy themselves by inspection or otherwise as to their accuracy. No person in this firm's employment has the authority to make or give any representation or warranty in respect of the property.

