



3 Almond Grove

Fairfield, Stockton-On-Tees, TS19 7DJ

Offers in excess of £210,000



Covering A Floor Area Of 1,015 Sq Ft, Typically Larger Than A Three-Bedroom Semi-Detached House. Nestled In The Tranquil Neighbourhood Of Almond Grove, Fairfield, This Charming Bungalow Offers Three Well-Proportioned Bedrooms & Is Perfect For Families Or Those Seeking A Comfortable Space To Call Home. The Living Room Is Spacious And Inviting, Providing An Ideal Setting For Relaxation Or Entertaining Guests.

This Well-Maintained Bungalow Is Particularly Suited For Buyers With Mobility Restrictions, Ensuring Ease Of Access Throughout The Property. The Absence Of A Chain And The Availability Of Vacant Possession Make This An Attractive Option For Those Looking To Move In Without Delay.

The West-Facing Rear Garden Is A Low-Maintenance Haven, Offering A High Level Of Privacy For Outdoor Enjoyment. It Is An Excellent Space For Gardening Enthusiasts Or Simply Unwinding In The Sun.



Location

Almond Grove Is Positioned In Fairfield & Can Be Accessed Via Fairfield Road & Witton Road. Nearby To Many Local Amenities, Bus Routes & Useful Road Links Such As The A19 & A66.

St Mark's Church Of England Academy Primary School - 13 Minute Walk, 4 Minute Drive.

St Patrick's Catholic Primary School - 12 Minute Walk, 4 Minute Drive

Ian Ramsey Church Of England Academy - 10 Minute Walk, 2 Minute Drive

The Grangefield Academy - 16 Minute Walk, 5 Minute Drive

A66 - 7 Minute Drive

A135 - 8 Minute Drive

All Distance Times As Suggested By Google Maps.

Note

Please Find The Attached Brochure With Material Information For Buyers.

Disclaimer

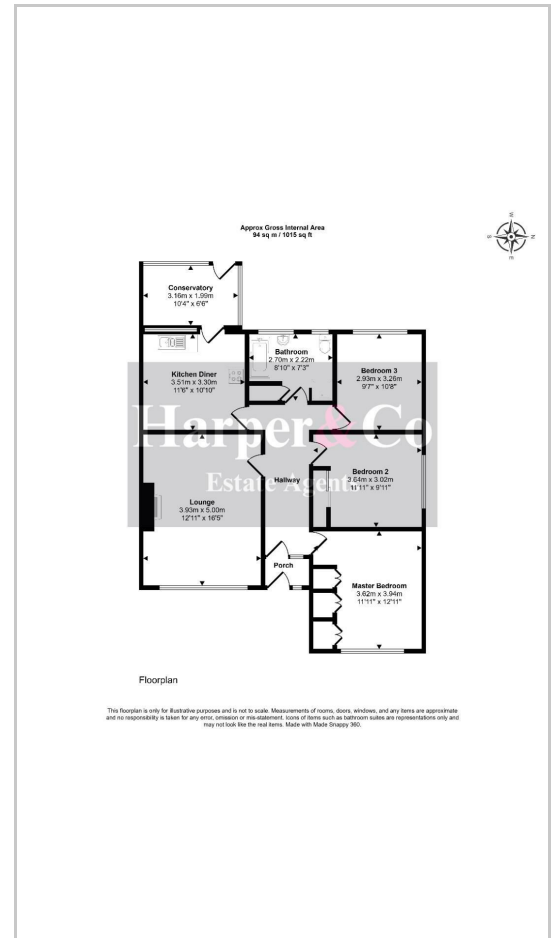
Although Issued In Good Faith, These Particulars Are Not Factual Representations And Are Not A Part Of Any Offer Or Contract. Prospective Buyers Should Independently Verify The Matters Mentioned In These Particulars. There Is No Authority For Harper & Co Estate Agents Limited Or Any Of Its Employees To Make Any Representations Or Warranties About This Property.

While We Try To Be As Accurate As Possible With Our Sales Particulars, They Are Only A General Overview Of The Property. If There Is Anything In Particular That Is Important To You, Please Contact The Office And We Will Be Happy To Check The Situation For You, Especially If You Are Considering Traveling A Significant Distance To View The Property. The Measurements Provided Are Only For Guidance, Thus They Must Be Regarded As Inaccurate. Please Be Aware That Harper & Co Have Not Tested Any Of The Services, Appliances, Or Equipment In This Property; As A Result, We Advise Prospective Buyers To Commission Their Own Surveys Or Service Reports Before Submitting A Final Offer To Purchase. Money Laundering Regulations: In Order To Avoid Any Delays In Finalising The Sale, Intending Buyers Will Be Required To Provide Identification Documentation At A Later Time. Please Cooperate With Us In This Process.

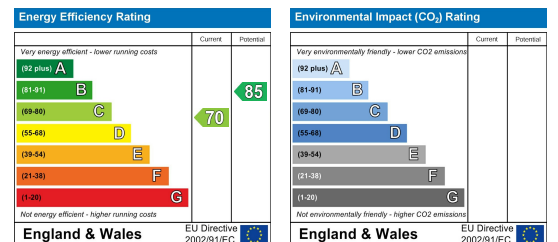
Area Map



Floor Plans



Energy Efficiency Graph



These particulars, whilst believed to be accurate are set out as a general outline only for guidance and do not constitute any part of an offer or contract. Intending purchasers should not rely on them as statements of representation of fact, but must satisfy themselves by inspection or otherwise as to their accuracy. No person in this firm's employment has the authority to make or give any representation or warranty in respect of the property.