



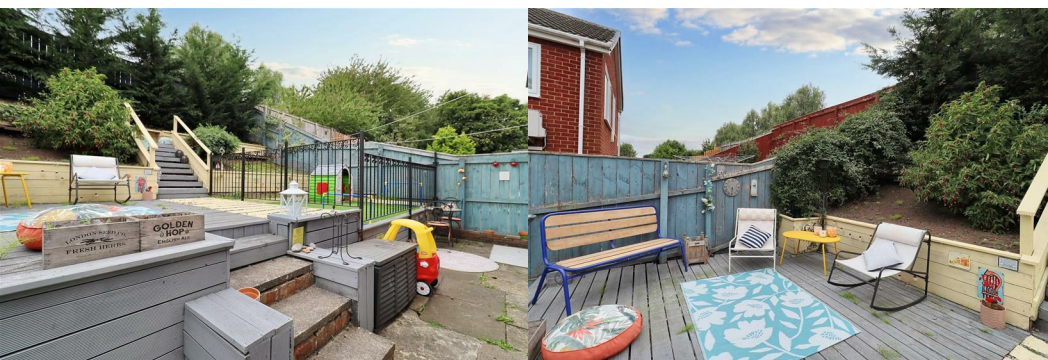
49 Ridley Drive

Norton, Stockton-On-Tees, TS20 1HE

Offers in excess of £180,000



A Stunningly Refurbished Extended Three-Bedroom Semi-Detached Home Set In One Of Norton's Most Desirable Locations. Perfectly Placed Within A Short Stroll Of The Iconic Village Green And Vibrant High Street, This Home Combines Timeless 1950s Character With A High-Quality Modern Finish, Creating A Truly Turn-Key Residence.



Description

Renovated In 2019, Every Detail Has Been Carefully Considered To Create A Space That Feels Both Contemporary And Inviting. From The Welcoming Hallway With Its Composite Entrance Door, To The Elegant Lounge/Diner With French Doors Leading Onto A Sunlit West-Facing Garden, This Home Is Designed For Stylish Family Living And Entertaining.

The Property Also Benefits From A Spacious Kitchen/Diner, An Attached Garage With Scope For Conversion (STPP), And A Recently Installed Gas Combi Boiler (With 10-Year Warranty). The Tiered Garden Basks In Afternoon And Evening Sunshine, Making It The Perfect Spot To Unwind.

Location

Attractively Positioned Within A Mature And Sought-After Norton District, With Excellent Commuter Access Just Minutes Away Whilst Being Within A Short Stroll Of Some Of Norton's Popular Bars & Restaurants, Sports Facilities And Its' Renowned Tree-Lined High Street & Duck Pond.

- Frederick Natrass Primary Academy - 4 Minute Walk
- St Josephs Catholic Academy - 5 Minute Walk
- Red House School - 10 Minute Walk, 4 Minute Drive
- King Edwin School - 13 Minute Walk, 5 Minute Drive
- A1027 - 4 Minute Drive
- A19 - 6 Minute Drive

All Distance Times As Suggested By Google Maps.

Note

Please Find The Attached Brochure With Material Information For Buyers.

Disclaimer

These Details Are Provided In Good Faith But Do Not Form Part Of Any Offer Or Contract. Harper & Co Estate Agents Ltd And Their Staff Are Not Authorised To Make Statements Or Guarantees About The Property.

We Aim For Accuracy, But These Particulars Are Only A General Guide. If There's Something Important To You, Please Contact Us So We Can Confirm The Details—Especially Before Travelling Long Distances To View.

Measurements Are Approximate And Should Not Be Relied Upon As Exact. We Have Not Tested Any Services, Appliances, Or Equipment, So We Recommend That Buyers Arrange Their Own Checks Or Surveys Before Making An Offer.

Money Laundering Notice

To Comply With Legal Requirements, Buyers Will Need To Provide ID Documents During The Sale Process. We Appreciate Your Cooperation.

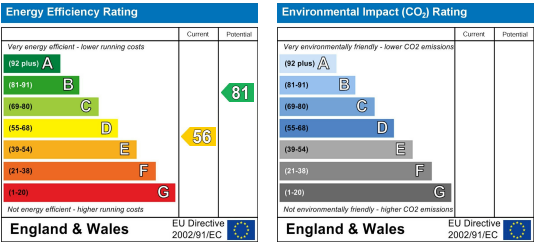
Area Map



Floor Plans



Energy Efficiency Graph



These particulars, whilst believed to be accurate are set out as a general outline only for guidance and do not constitute any part of an offer or contract. Intending purchasers should not rely on them as statements of representation of fact, but must satisfy themselves by inspection or otherwise as to their accuracy. No person in this firms employment has the authority to make or give any representation or warranty in respect of the property.