

Harper & Co

Estate Agents Ltd

<https://www.harperandcoestateagents.co.uk>



Deighton Grove , Billingham, TS23 3UD

Extended Semi Detached Family Home | South Facing Garden | Sought After Cul-De-Sac Location

Situated Within A Highly Sought After Area Of Billingham, This Immaculately Presented Extended Semi Detached Family Home Offers Stylish And Spacious Accommodation Ready To Move Straight Into.

£195,000

Deighton Grove

, Billingham, TS23 3UD



- Extended Semi Detached Family Home In Sought After Location
- Spacious Lounge With Extended Sitting Room And Skylights
- Three Well Appointed Bedrooms And Family Bathroom
- Close To Reputable Schools, Amenities And Transport Links
- Positioned Within A Quiet Cul-De-Sac With No Through Traffic
- French Doors Opening Onto The South Facing Rear Garden
- Private Rear Garden With Lawn And Patio Seating Areas
- Immaculately Presented And Ready To Move Into
- Open Plan Kitchen/Diner With Integrated Appliances
- Driveway Providing Off Road Parking And Garage Storage

Full Description

Location

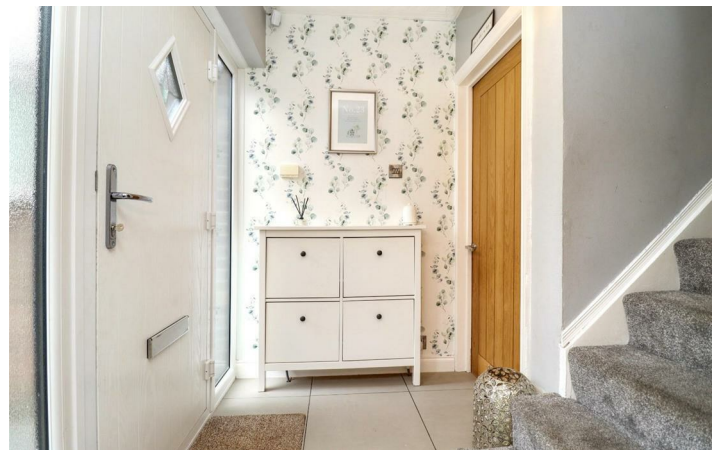
Note

Disclaimer

Money Laundering Notice

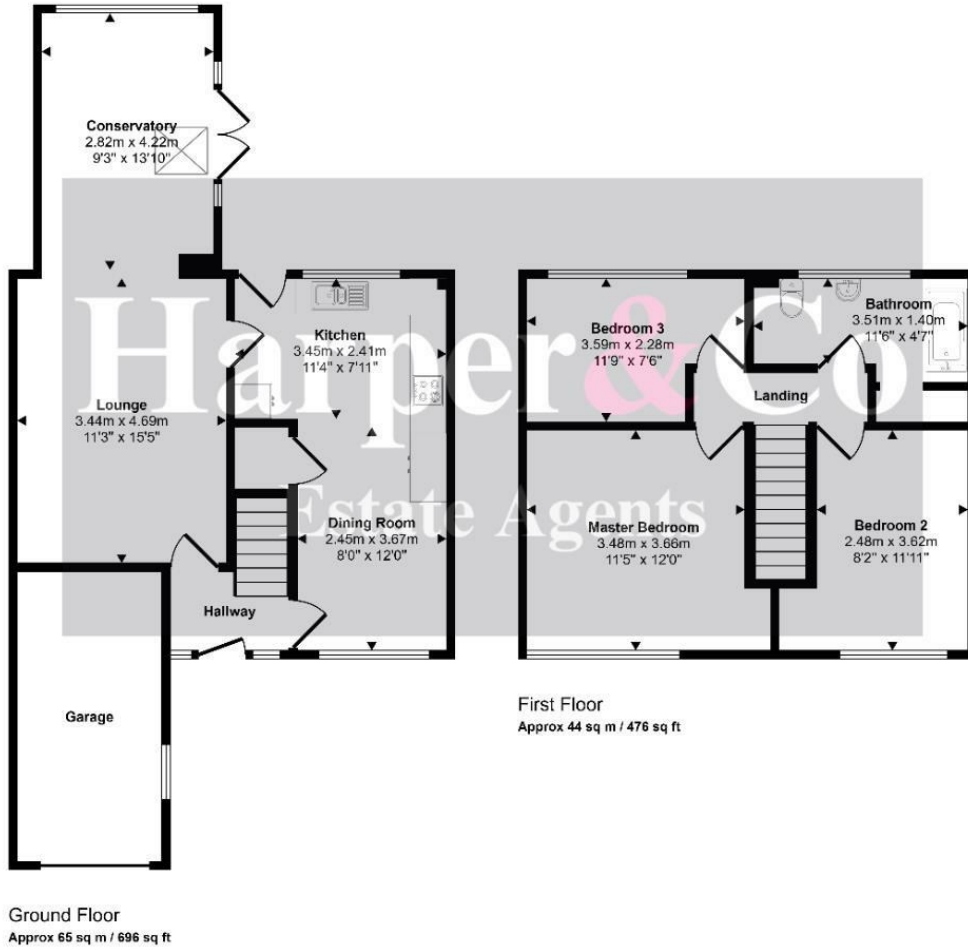


Directions



Floor Plan

Approx Gross Internal Area
109 sq m / 1172 sq ft



This floorplan is only for illustrative purposes and is not to scale. Measurements of rooms, doors, windows, and any items are approximate and no responsibility is taken for any error, omission or mis-statement. Icons of items such as bathroom suites are representations only and may not look like the real items. Made with Made Snappy 360.

These particulars, whilst believed to be accurate are set out as a general outline only for guidance and do not constitute any part of an offer or contract. Intending purchasers should not rely on them as statements of representation of fact, but must satisfy themselves by inspection or otherwise as to their accuracy. No person in this firm's employment has the authority to make or give any representation or warranty in respect of the property.

