

Harper & Co

Estate Agents Ltd

<https://www.harperandcoestateagents.co.uk>



Chelmsford Avenue

Hartburn, Stockton-On-Tees, TS18 5AG

Situated Within One Of Hartburn's Most Sought After Residential Locations, This Well Maintained Family Home Offers Spacious And Versatile Accommodation Spanning Approximately 1,098 Sq Ft, Making It An Ideal Purchase For Growing Families.

Offers over £230,000

Chelmsford Avenue

Hartburn, Stockton-On-Tees, TS18 5AG



- Well Maintained Family Home In Prime Hartburn Location
- Dining Area Featuring A Charming Log Burning Stove
- Loft Space Accessed Via Pull Down Ladders Providing Additional Storage
- Detached Garage And Ample Off Road Parking For Up To Four Vehicles
- Extended Family Home Offering Approximately 1,098 Sq Ft Of Accommodation
- Three Well Proportioned Bedrooms With Fitted Wardrobes
- Five Year Old Boiler Which Has Been Annually Serviced
- Open Plan Lounge And Dining Area Ideal For Entertaining
- Family Bathroom Featuring A Four Piece Suite
- Generous Rear Garden With Decking And Patio Areas

Full Description

Location

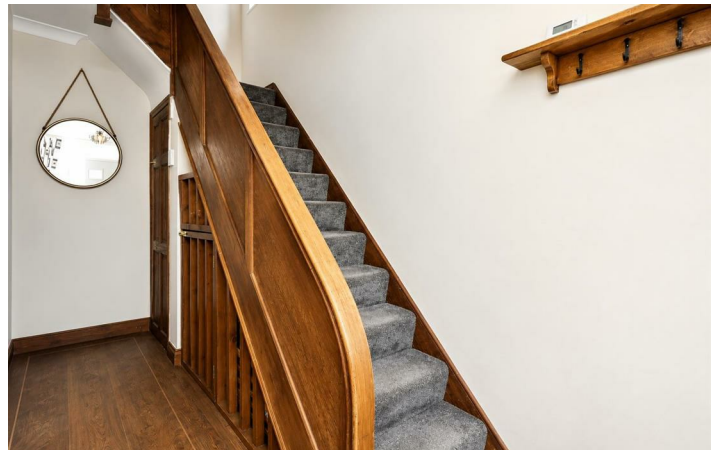
Note

Disclaimer

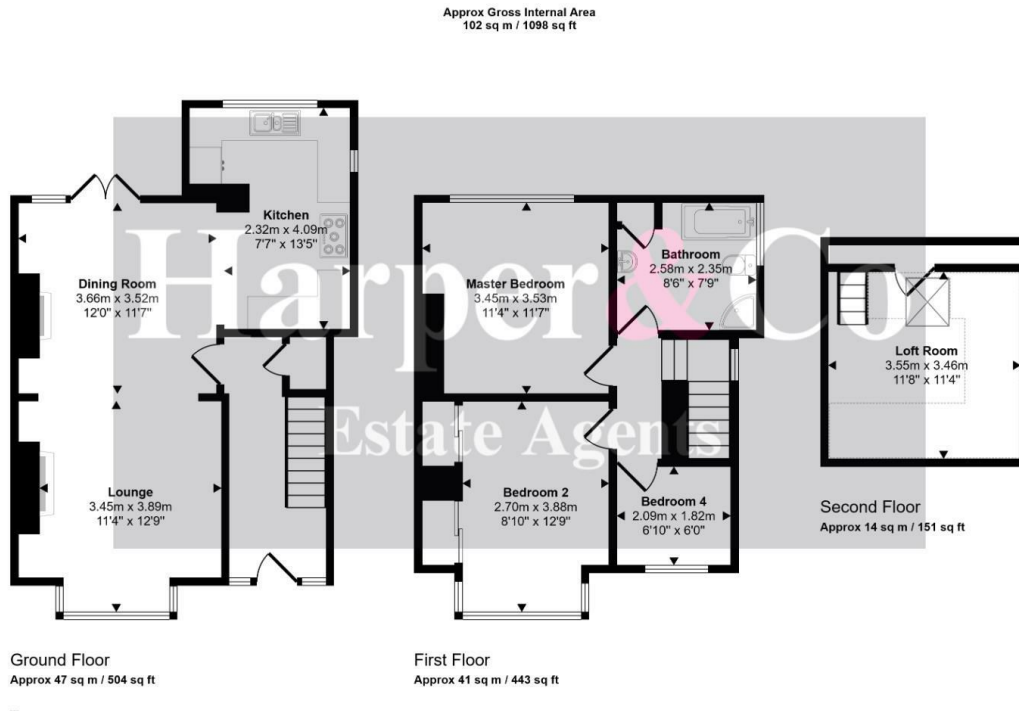
Money Laundering Notice



Directions



Floor Plan



This floorplan is only for illustrative purposes and is not to scale. Measurements of rooms, doors, windows, and any items are approximate and no responsibility is taken for any error, omission or mis-statement. Icons of items such as bathroom suites are representations only and may not look like the real items. Made with Made Snappy 360.

These particulars, whilst believed to be accurate are set out as a general outline only for guidance and do not constitute any part of an offer or contract. Intending purchasers should not rely on them as statements of representation of fact, but must satisfy themselves by inspection or otherwise as to their accuracy. No person in this firm's employment has the authority to make or give any representation or warranty in respect of the property.

