

# Plot 18A Lemington Close, Barrow In House - Detached



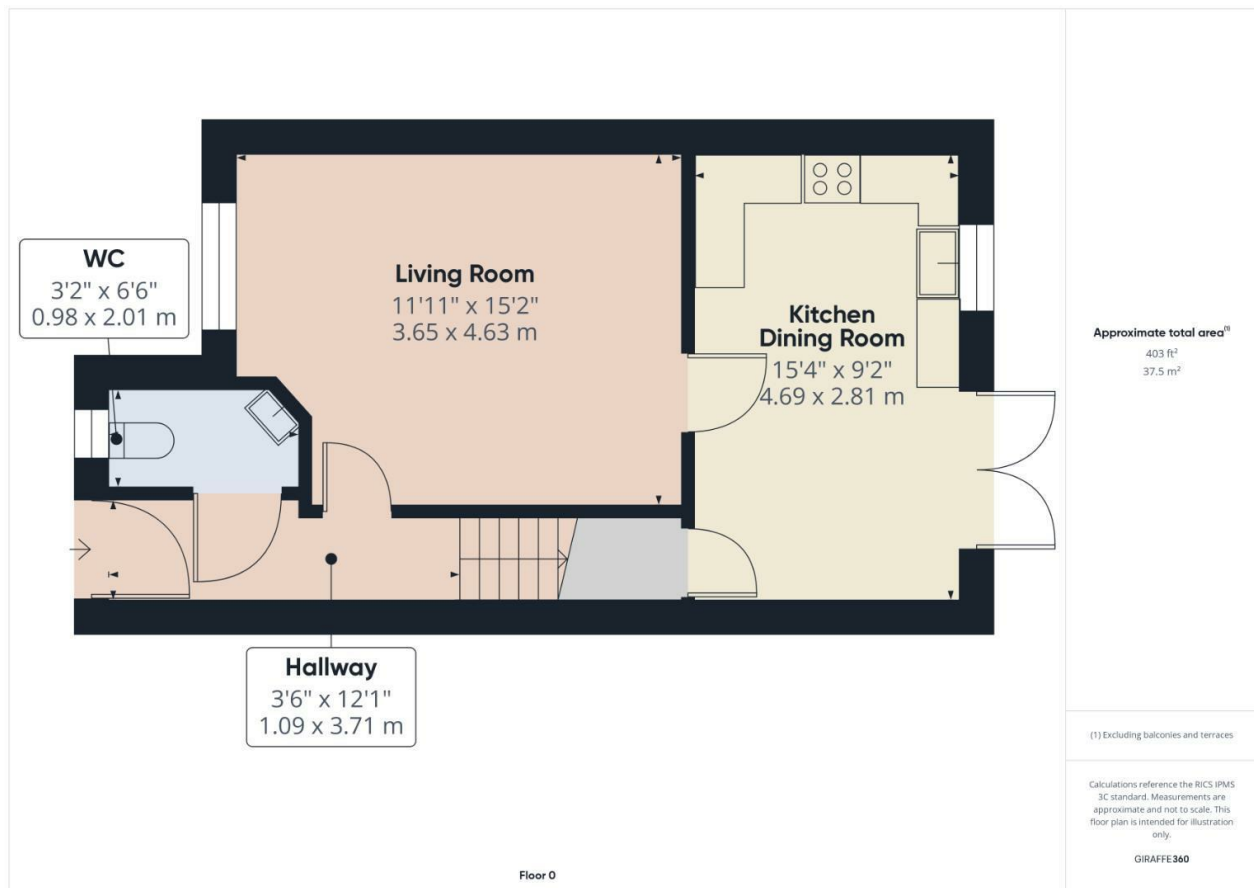
\*\*\* Full £5,000 Stamp Duty Paid & 100% Part exchange anywhere in the UK \*\*\*

Nestled in the charming area of Barrow In Furness, Plot 18A Lemington Close presents an exceptional opportunity to acquire a stunning new build detached house. This modern residence boasts three well-proportioned bedrooms, making it ideal for families or those seeking extra space. The property features a spacious reception room, perfect for entertaining guests or enjoying quiet evenings at home.

With two contemporary bathrooms, morning routines will be a breeze, ensuring convenience for all occupants. The thoughtful design of this home maximises both comfort and functionality, catering to the needs of modern living.

Parking is made easy with space for two vehicles, a valuable asset in today's busy world. The property is situated in a peaceful neighbourhood, offering a sense of community while remaining close to local amenities and transport links.

As an added incentive, the full £5,000 Stamp Duty has been paid, making this an even more attractive proposition for potential buyers. This new build is not just a house; it is a place where memories can be made and cherished for years to come. Do not miss the chance to make this delightful property your new home.



Particulars are not for contractual use, are only indicative & show typical layout, handing & sizes which may vary between plots



## Help to Buy & Part Exchange schemes available

Visit [WWW.ESTEEMHOMES.CO.UK](http://WWW.ESTEEMHOMES.CO.UK) for more information...