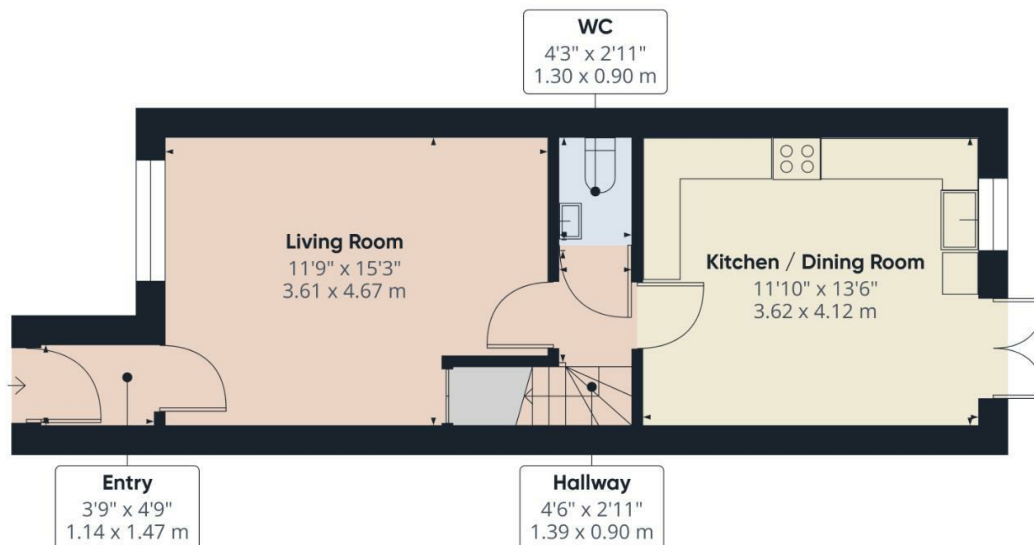


# Plot 40A Gosforth Crescent, Barrow-In-House



Situated on our beautiful Park View development we offer for sale the ever popular Kentmere House Type. Set over three floors The Kentmere briefly comprises of entrance hallway, good size lounge, ground floor cloakroom and kitchen diner fitted with award winning kitchen and a range of Zannusi appliances as standard. To the first floor are two double bedrooms with fitted wardrobes a three piece modern family bathroom. To the second floor is the master bedroom with en-suite and storage area and a single bedroom with fitted wardrobe. Externally is a rear enclosed garden, driveway offering off road parking and lawn frontage. Located within a good catchment area for top rated schools and close to railway station, bus routes and shops makes the property suitable for a variety of purchasers.



Approximate total area<sup>®</sup>  
400 ft<sup>2</sup>  
37.2 m<sup>2</sup>

(1) Excluding balconies and terraces

Calculations reference the RICS IPMS 3C standard. Measurements are approximate and not to scale. This floor plan is intended for illustration only.

GIRAFFE 360

Floor 0

Particulars are not for contractual use, are only indicative & show typical layout, handing & sizes which may vary between plots



## Help to Buy & Part Exchange schemes available

Visit [WWW.ESTEEMHOMES.CO.UK](http://WWW.ESTEEMHOMES.CO.UK) for more information....