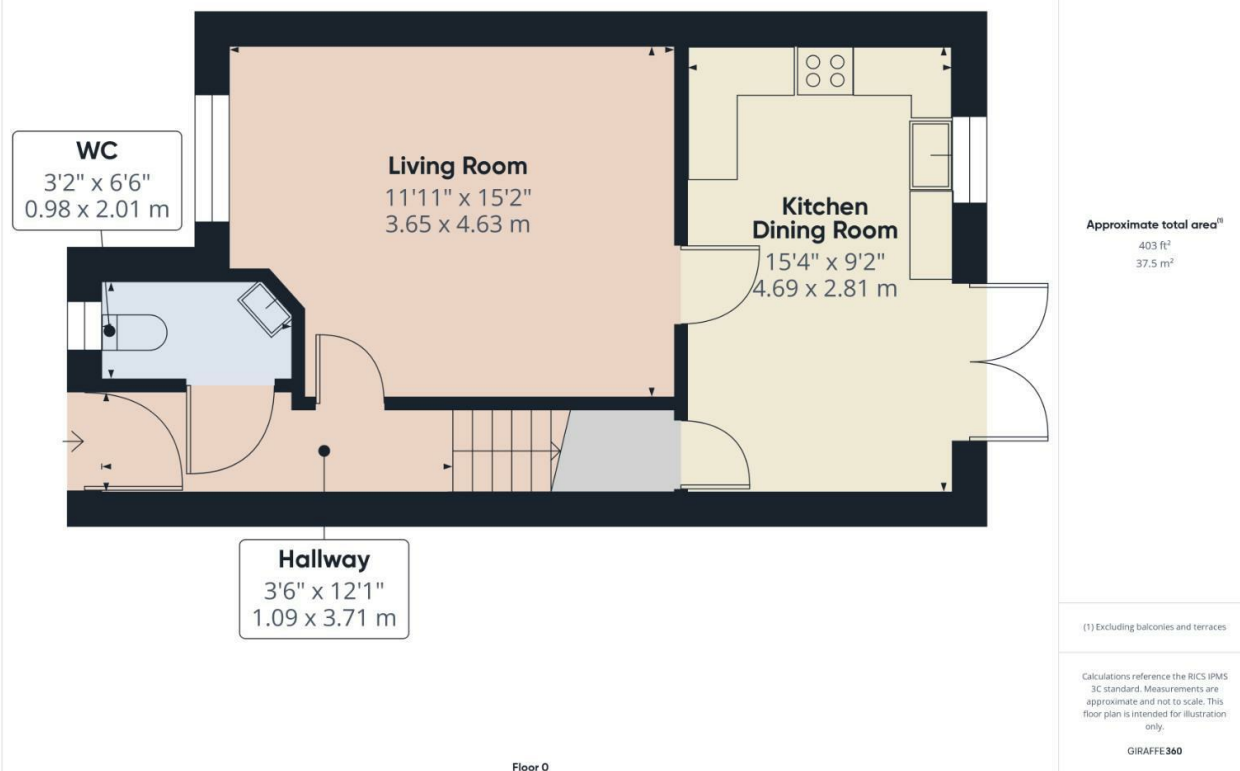


# Plot 19 Lemington Close, Barrow In House - Detached



The Arnison house type is a 3 bedroom detached property on our sought after Park View development. With open plan living space, plenty of storage and a generous kitchen/dining area with French doors that provide garden access, it makes an ideal family home. The ground floor has a convenient downstairs W/C, a spacious front aspect lounge and a generous kitchen/dining room with French doors to rear garden. The first floor has three bedrooms and a family bathroom. Bedroom 1 has an en-suite.



Particulars are not for contractual use, are only indicative & show typical layout, handing & sizes which may vary between plots



## Help to Buy & Part Exchange schemes available

Visit [WWW.ESTEEMHOMES.CO.UK](http://WWW.ESTEEMHOMES.CO.UK) for more information....