



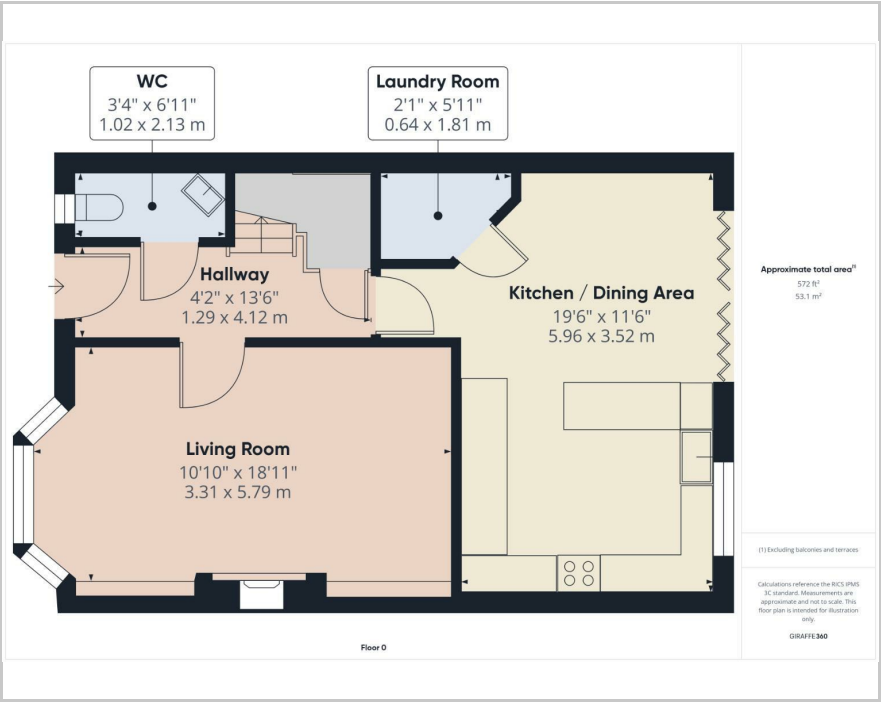
Plot 21 Lemington Close, Barrow-In-Furness, LA13 9FE

Price £395,000

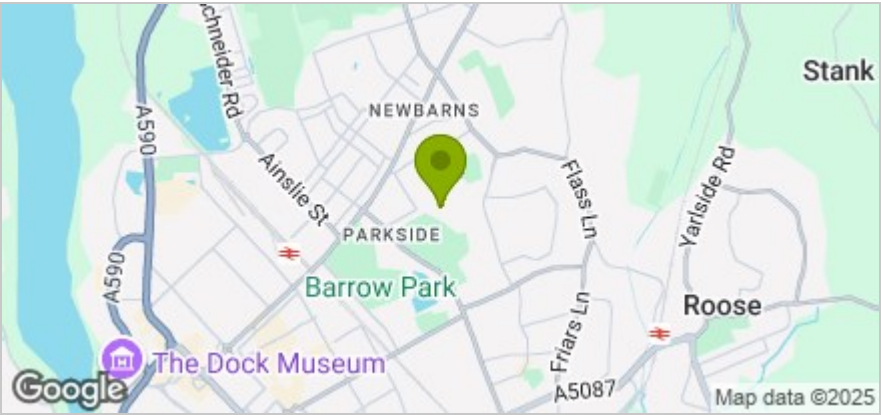




Floor Plan



Area Map



These particulars, whilst believed to be accurate are set out as a general outline only for guidance and do not constitute any part of an offer or contract. Intending purchasers should not rely on them as statements of representation of fact, but must satisfy themselves by inspection or otherwise as to their accuracy. No person in this firms employment has the authority to make or give any representation or warranty in respect of the property.

Accommodation

- Full £9,750 Stamp Duty Paid
- 100% Part Exchange available anywhere in the UK
- Fully fitted kitchen with built in Zanussi appliances
- Built in wardrobes
- West facing garden
- We will help you move now with up to £10,000 towards your deposit or up to an extra 5% over the current valuation on your existing home. (T's & C's apply)
- Tiled flooring to kitchen / diner, bathroom, ensuite and WC
- Double shower to ensuite
- Single detached Garage

Viewing

Please contact our Esteem Homes Office on 01229 813036 if you wish to arrange a viewing appointment for this property or require further information.

Energy Efficiency Graph

