

Plot 31 Gosforth Crescent, Barrow-In-House

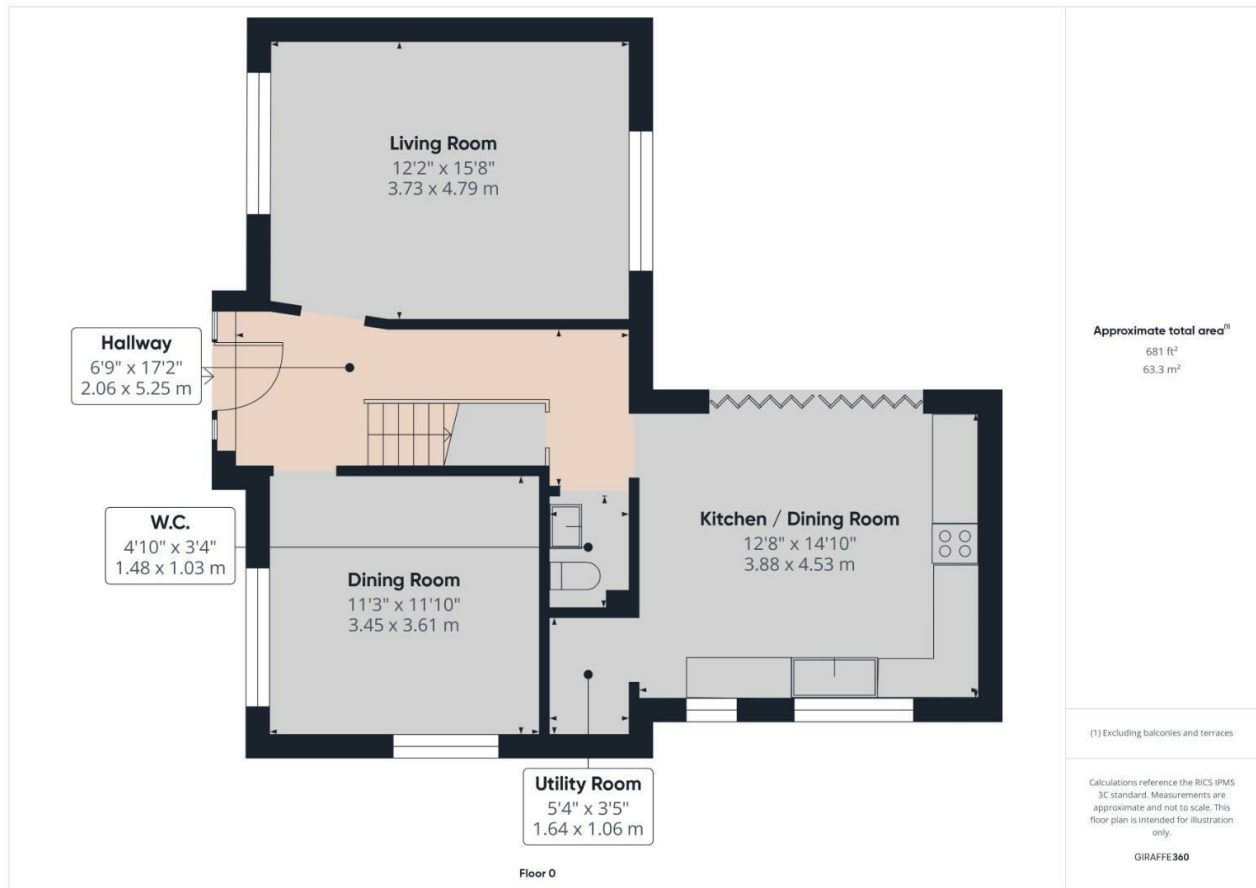


Nestled in the charming area of Barrow, Plot 31 Gosforth Crescent presents an excellent opportunity for families seeking a spacious and comfortable home. This delightful house boasts four well-proportioned bedrooms, providing ample space for relaxation and privacy. The property features a welcoming reception room, perfect for entertaining guests or enjoying quiet evenings with family.

With two modern bathrooms, morning routines will be a breeze, ensuring convenience for all residents. The layout of the house is thoughtfully designed to cater to the needs of contemporary living, making it an ideal choice for those looking to settle in a friendly community.

Additionally, the property offers parking for two vehicles, a valuable asset in today's busy world. This feature ensures that you and your guests will have a secure and convenient place to park.

Gosforth Crescent is situated in a pleasant neighbourhood, providing easy access to local amenities, schools, and parks, making it a perfect location for families. This house is not just a place to live; it is a place to create lasting memories. If you are in search of a home that combines comfort, space, and a welcoming community, this property is certainly worth considering.



Particulars are not for contractual use, are only indicative & show typical layout, handing & sizes which may vary between plots



Help to Buy & Part Exchange schemes available

Visit WWW.ESTEEMHOMES.CO.UK for more information...