

# 3 Lamlash Gardens, Kilmarnock, KA3 1AB

## House - Detached

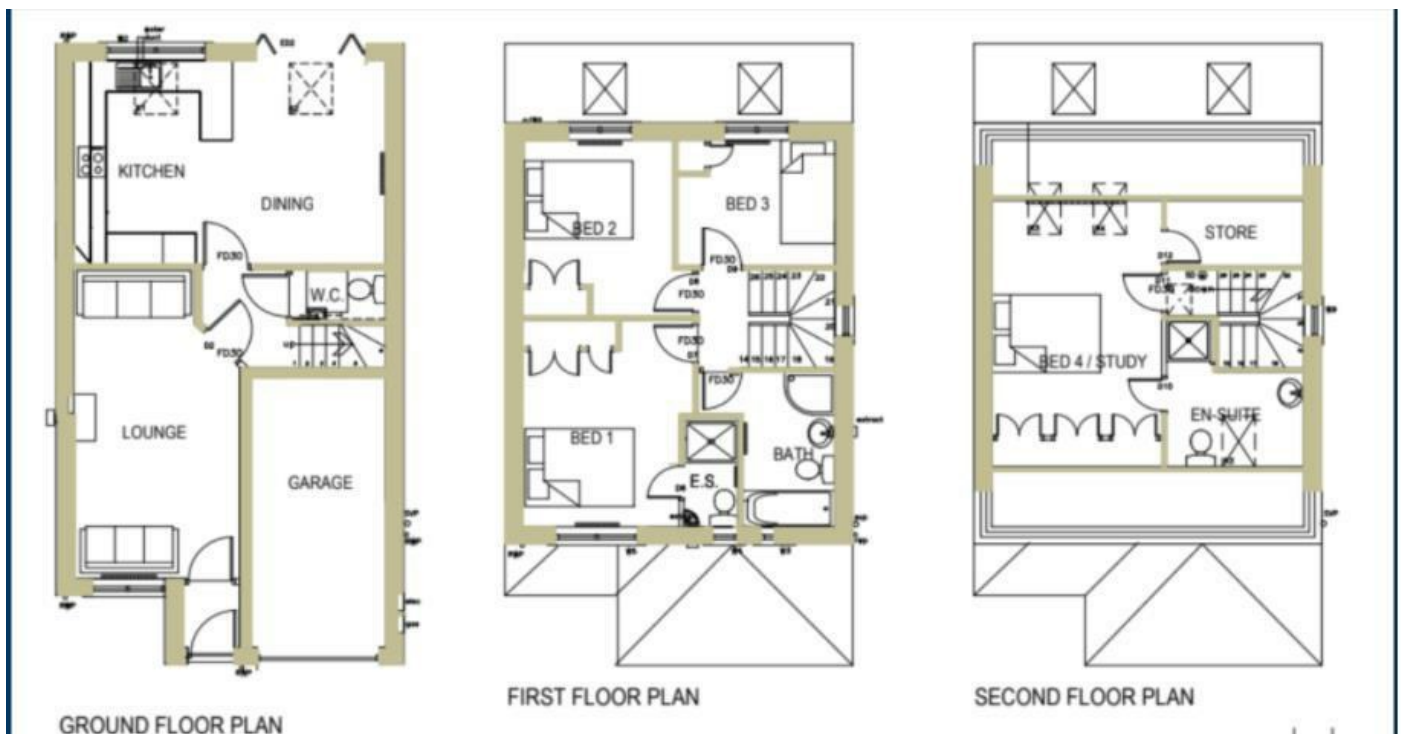


Nestled in the charming area of Lamlash Gardens, Kilmarnock, this delightful detached house offers a perfect blend of comfort and space, making it an ideal family home. With four well-proportioned bedrooms, this property provides ample room for both relaxation and privacy.

Spanning an impressive 840 square feet, the layout is thoughtfully designed to maximise the use of space, ensuring that every corner of the home is functional and inviting. The living areas are bright and airy, creating a warm atmosphere that is perfect for both entertaining guests and enjoying quiet family evenings.

The surrounding neighbourhood is known for its friendly community and convenient amenities, making it a desirable location for families and professionals alike. With local schools, parks, and shops just a stone's throw away, you will find everything you need within easy reach.

This property presents a wonderful opportunity for those seeking a spacious and comfortable home in a lovely area. Whether you are looking to settle down or invest, this house in Lamlash Gardens is certainly worth considering.



Particulars are not for contractual use, are only indicative & show typical layout, handing & sizes which may vary between plots



## Help to Buy & Part Exchange schemes available

Visit [WWW.ESTEEMHOMES.CO.UK](http://WWW.ESTEEMHOMES.CO.UK) for more information...