

Plot 46 Westhead Green, Liverpool, L10 8AE

House



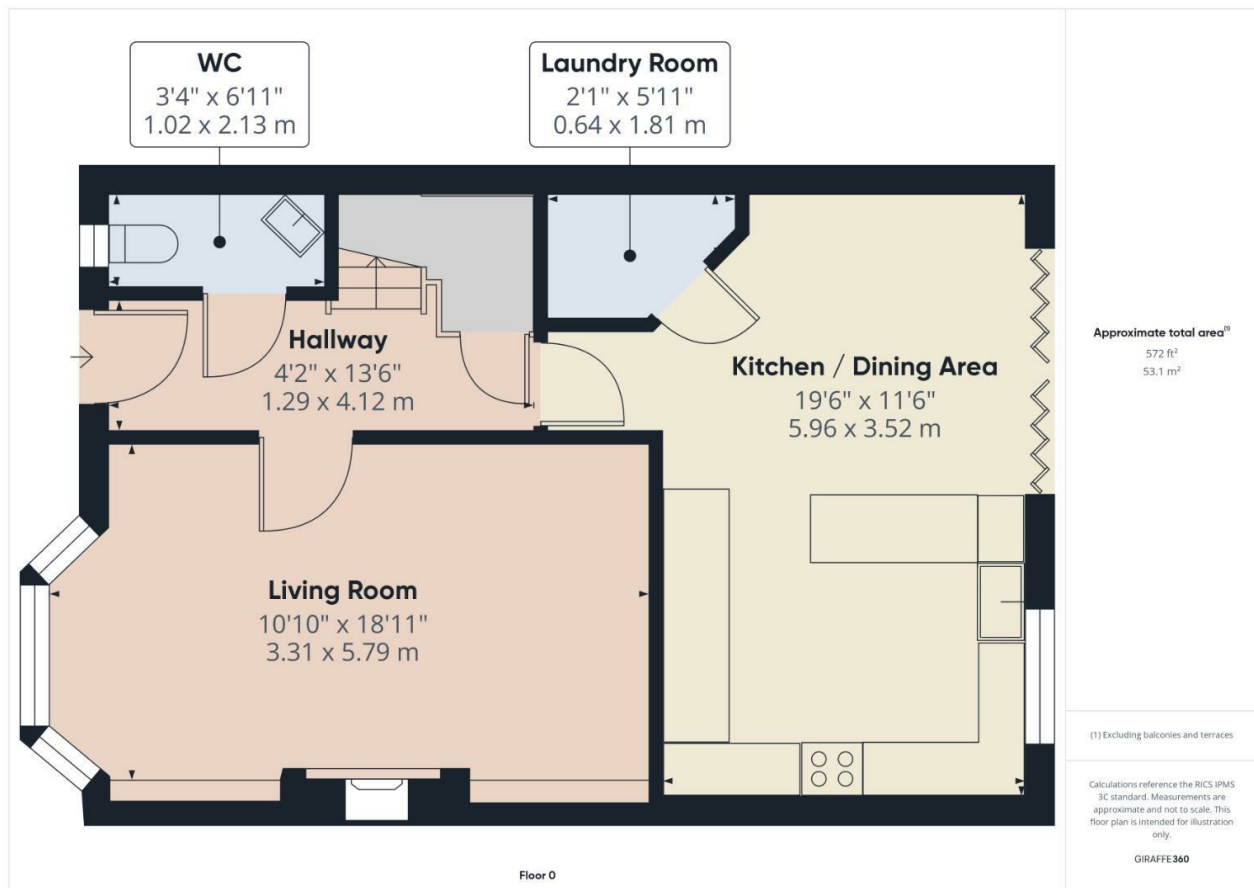
*** FULL £11,500 STAMP DUTY PAID 100% Part Exchange Anywhere in the UK ***

Nestled in the charming area of Westhead Green, Liverpool, this newly built house offers a perfect blend of modern living and comfort. With four spacious bedrooms, this property is ideal for families or those seeking extra space for guests or a home office. The well-designed layout includes a welcoming reception room, perfect for entertaining or relaxing after a long day.

The house boasts two contemporary bathrooms, ensuring convenience for all residents. The new build status means you can enjoy the benefits of modern construction, including energy efficiency and the latest design features.

One of the standout features of this property is the ample parking space, accommodating up to four vehicles, which is a rare find in this area. This makes it an excellent choice for families with multiple cars or for those who enjoy hosting visitors.

Overall, this property at Plot 46, Westhead Green, presents a fantastic opportunity for anyone looking to settle in a vibrant community while enjoying the comforts of a new home. With its generous space and modern amenities, it is sure to appeal to a wide range of buyers.



Particulars are not for contractual use, are only indicative & show typical layout, handing & sizes which may vary between plots



Help to Buy & Part Exchange schemes available

Visit WWW.ESTEEMHOMES.CO.UK for more information...