

# Plot 28 Gosforth Crescent, Barrow in House

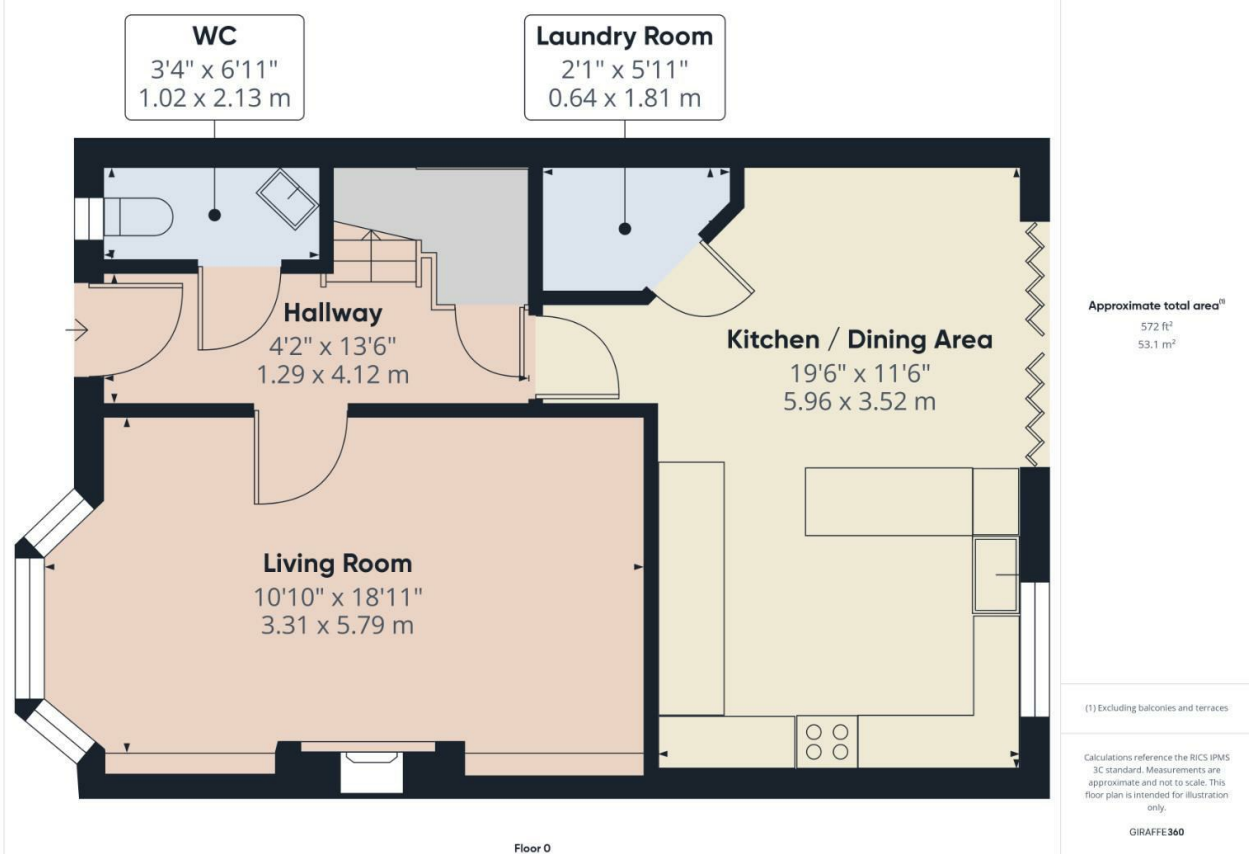


The Mardale house type is a four bedroom detached house situated on our popular Park View development.

Fabulous master bedroom with en-suite with large shower & three further good sized bedrooms.

The property benefits from gas fired central heating system and double glazing, driveway for at least 2 cars

In brief, the accommodation includes a entrance hall, lounge, kitchen/diner, utility, separate ground floor cloakroom. The first floor provides four bedrooms, & a family bathroom.



Particulars are not for contractual use, are only indicative & show typical layout, handing & sizes which may vary between plots



## Help to Buy & Part Exchange schemes available

Visit [WWW.ESTEEMHOMES.CO.UK](http://WWW.ESTEEMHOMES.CO.UK) for more information....