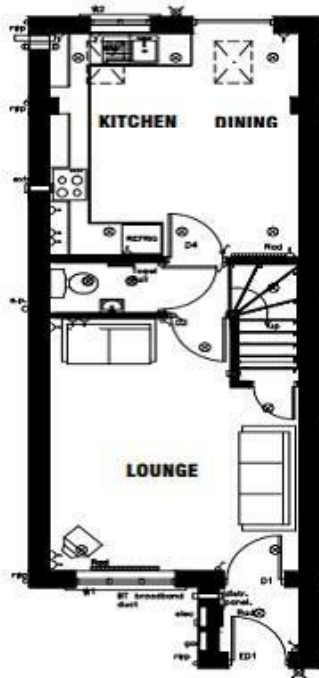


Plot 8 Pennington Close, Barrow-In-House

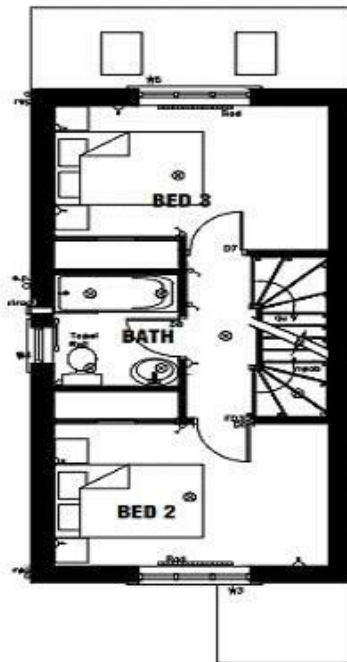


Situated on our beautiful Abbotsmead development off Friars Lane, we offer for sale the ever popular Kentmere House Type. Set over three floors. The Kentmere briefly comprises of entrance hallway, good size lounge, ground floor cloakroom and kitchen diner. Fitted with an award winning kitchen and a range of Zannusi appliances as standard. To the first floor are two two double bedrooms with fitted wardrobes and a three piece modern family bathroom. To the second floor is the master bedroom with ensuite and storage area and a single bedroom with fitted wardrobe. Externally is a rear enclosed garden, driveway offering off road parking and lawn frontage. Located within a good catchment area for top rated schools and close to railway station, bus routes & shops makes the property suitable for a variety of purchasers.



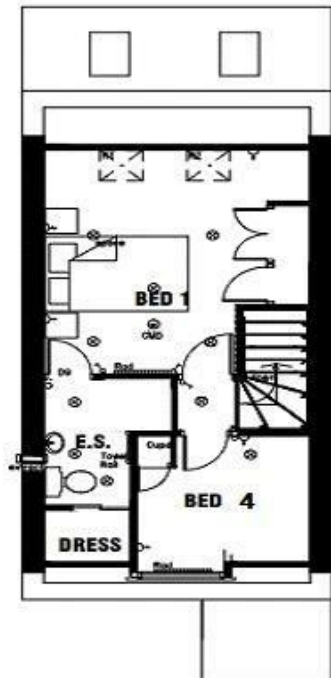
GROUND FLOOR PLAN

Lounge 12' x 15'6"
 Kitchen / Diner 12' x 13'6"
 W/C



FIRST FLOOR PLAN

Bed 2 12' x 10'4"
 Bed 3 12' x 10'6"
 Bathroom



SECOND FLOOR PLAN

Bed 1 12' x 13'10"
 Bed 4 7'11 x 7'9"
 EnSuite
 Dressing Room

Particulars are not for contractual use, are only indicative & show typical layout, handing & sizes which may vary between plots



Help to Buy & Part Exchange schemes available

Visit WWW.ESTEEMHOMES.CO.UK for more information...