

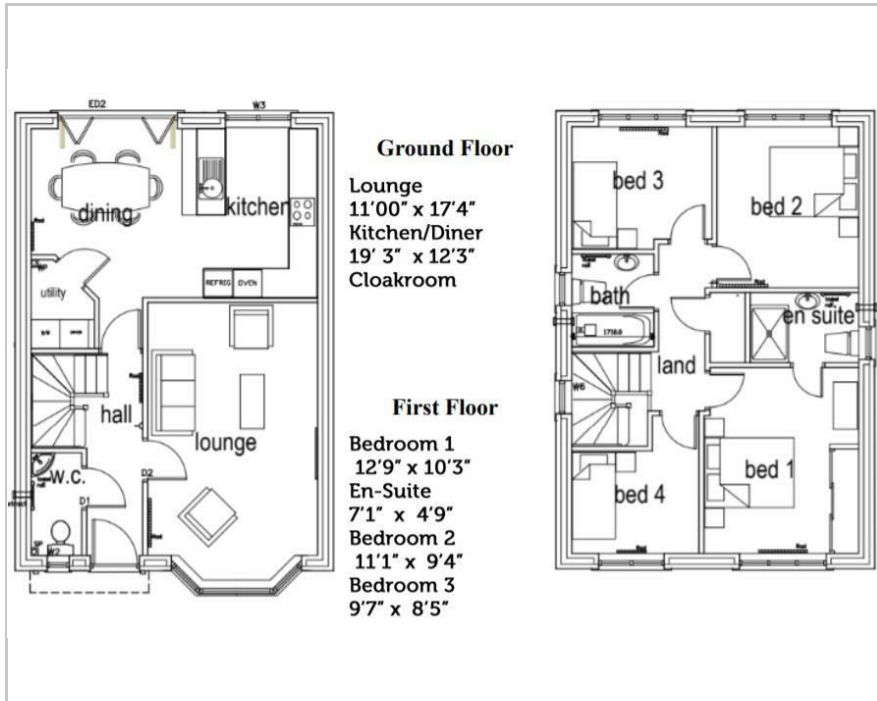


Plot 22 Lemington close, Barrow In Furness, LA13 9FE

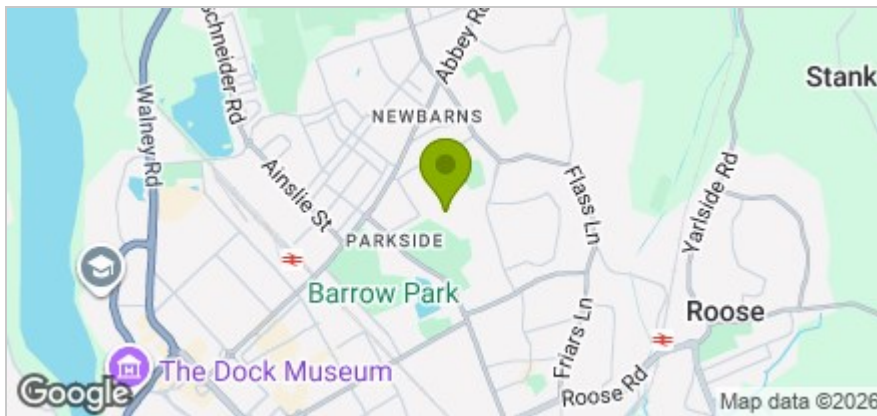
Price £390,000



## Floor Plan



## Area Map



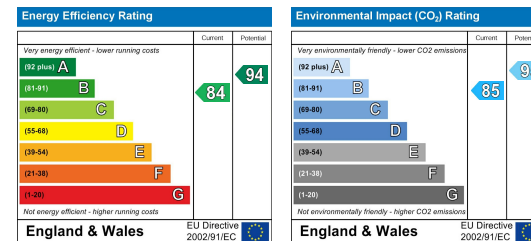
## Accommodation

- Full £9,500 Stamp Duty Paid
- 100% Part Exchange available anywhere in the UK
- Large Kitchen / Diner with bi fold doors
- Tiled flooring to kitchen / diner, bathroom, ensuite and WC
- Parking for 3 cars
- Fully fitted kitchen with built in Zanussi appliances
- Built in wardrobes
- Situated in a sort after area close to all amenities

## Viewing

Please contact our Esteem Homes Office on 01229 813036 if you wish to arrange a viewing appointment for this property or require further information.

## Energy Efficiency Graph



These particulars, whilst believed to be accurate are set out as a general outline only for guidance and do not constitute any part of an offer or contract. Intending purchasers should not rely on them as statements of representation of fact, but must satisfy themselves by inspection or otherwise as to their accuracy. No person in this firm's employment has the authority to make or give any representation or warranty in respect of the property.