

# Plot 26 Lemington Close, Barrow-In-House

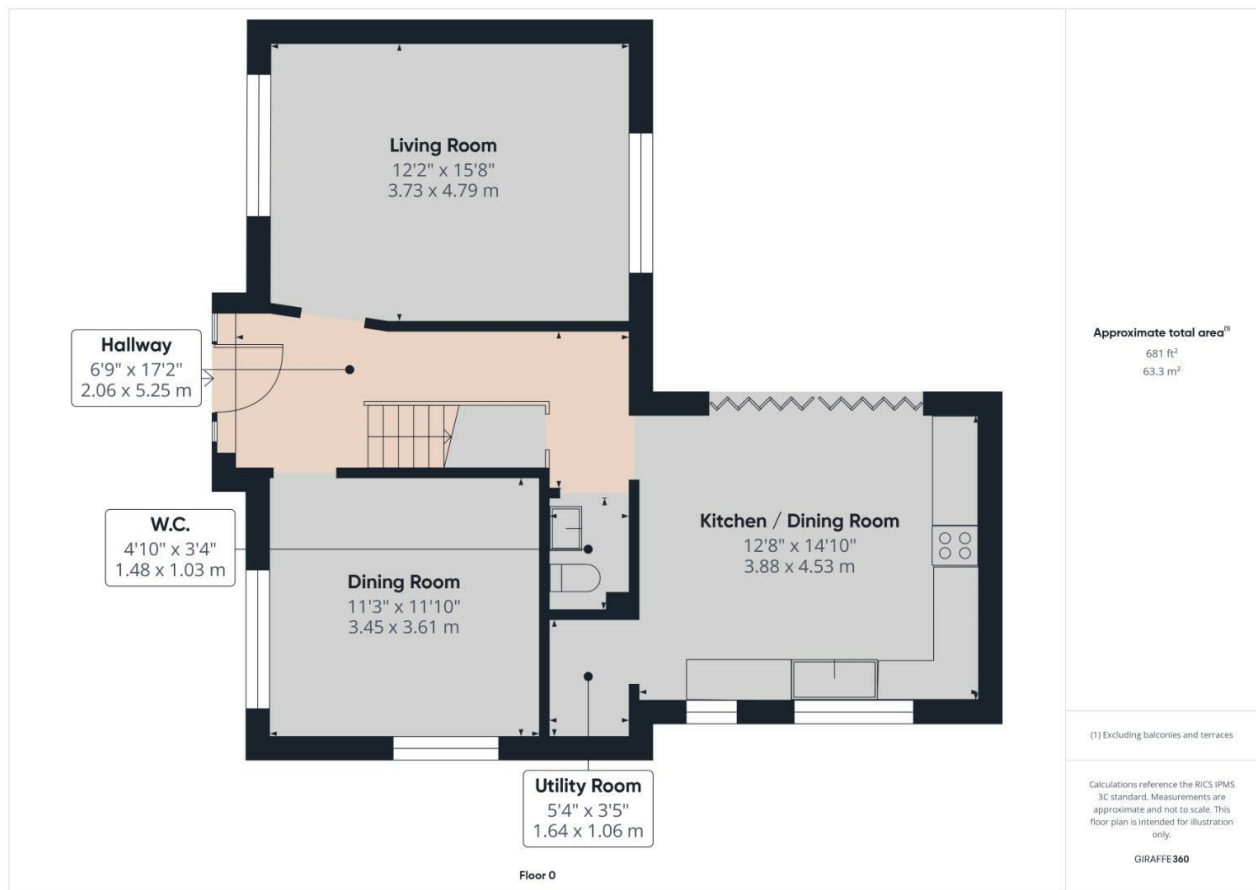


Nestled in the charming area of Barrow, Plot 26 Lemington Close presents an excellent opportunity for families seeking a spacious and comfortable home. This delightful house boasts four well-proportioned bedrooms, providing ample space for relaxation and privacy. The property features a welcoming two reception rooms, perfect for entertaining guests or enjoying quiet evenings with family.

With three bathrooms, morning routines will be a breeze, ensuring convenience for all members of the household. The layout of the home is designed to offer both functionality and comfort, making it an ideal choice for modern living.

One of the standout features of this property is the generous parking space, accommodating up to four vehicles. This is a significant advantage in today's busy world, where parking can often be a challenge.

Situated in a peaceful neighbourhood, this home offers a perfect blend of tranquillity and accessibility. Residents can enjoy the local amenities and the community spirit that Barrow has to offer. Whether you are looking for a family home or a place to settle down, Plot 26 Lemington Close is a property that deserves your attention. Don't miss the chance to make this lovely house your new home.



Particulars are not for contractual use, are only indicative & show typical layout, handing & sizes which may vary between plots



## Help to Buy & Part Exchange schemes available

Visit [WWW.ESTEEMHOMES.CO.UK](http://WWW.ESTEEMHOMES.CO.UK) for more information...