



TAILOR MADE
SALES & LETTINGS



Appledore Drive Allesley Green Coventry CV5 7PQ

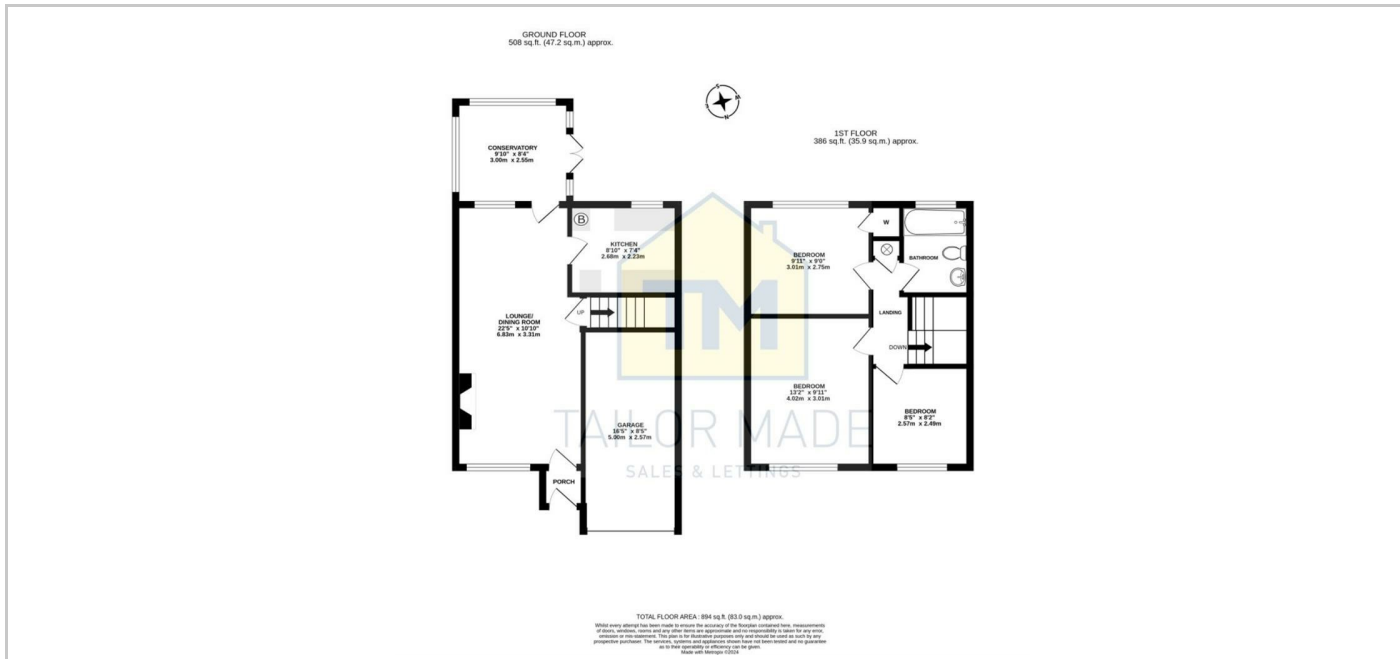
£290,000

TO LET

- Semi Detached
- Three Bedrooms
- Modern Kitchen
- Large Through Lounge / Diner
- Conservatory
- Driveway
- Integral Garage With Scope to Convert
- Highly Desirable Location
- *£295,000, priced for a quick sale*
- NO ONWARD CHAIN

THE PROPERTY

A lovely extended three bedroom semi detached family home, tucked away on a quiet cul-de-sac on the highly desirable Allesley Green development - beautiful modern fully fitted kitchen - large through lounge / diner - conservatory overlooking the garden - driveway and integral garage with scope to convert to another reception room - excellent condition throughout.



SITUATION

Directions