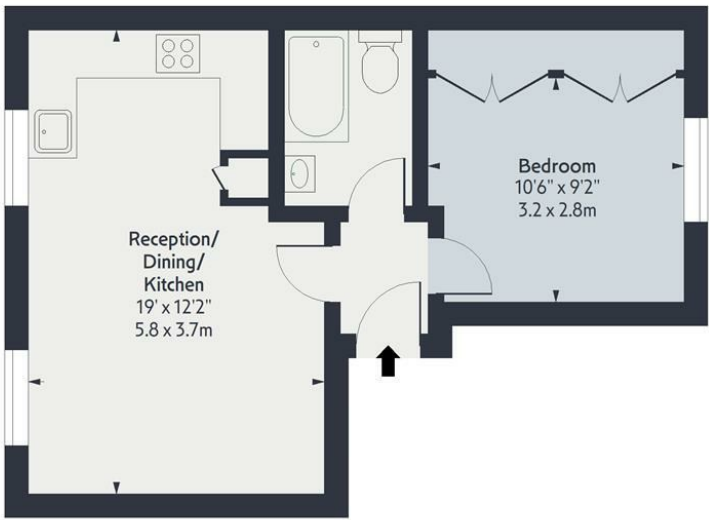


Amhurst Road, N16  
Approx. Gross Internal Area 434 Sq Ft - 40.32 Sq M

OAKWOOD



Upper Ground Floor  
Floor Area 33 Sq Ft - 3.07 Sq M



First Floor  
Floor Area 401 Sq Ft - 37.25 Sq M



Measured according to RICS IPMS2. Floor plan is for illustrative purposes only and is not to scale. Every attempt has been made to ensure the accuracy of the floor plan shown, however all measurements, fixtures, fittings and data shown are an approximate interpretation for illustrative purposes only. 1 sq m = 10.76sq feet.  
lpaplus.com Date: 18/8/2025

Whilst every attempt has been made to ensure the accuracy of the floor plan contained here, measurements of doors, windows, rooms and any other items are approximate and no responsibility is taken for any error, omission or mis-statement. This plan is for illustrative purposes only and should be used as such by any prospective purchaser. The services, systems and appliances shown have not been tested and no guarantee as to their operability or efficiency can be given.



£2,000

A well-presented one-bedroom flat with a separate office space, built-in storage, and large windows that flood the home with natural light. Set on a popular street near Stoke Newington, it's perfect for professionals seeking flexible living in a vibrant neighbourhood.

Just a short walk from Rectory Road station with fast links to Liverpool Street, and close to frequent bus routes connecting you to Dalston, Shoreditch, and the City. Green spaces, cafés and independent shops are all nearby, offering the best of Hackney living.





- 1 DOUBLE BEDROOM
- SEPERATE OFFICE

- BUILT IN STORAGE
- GREAT LOCATION

