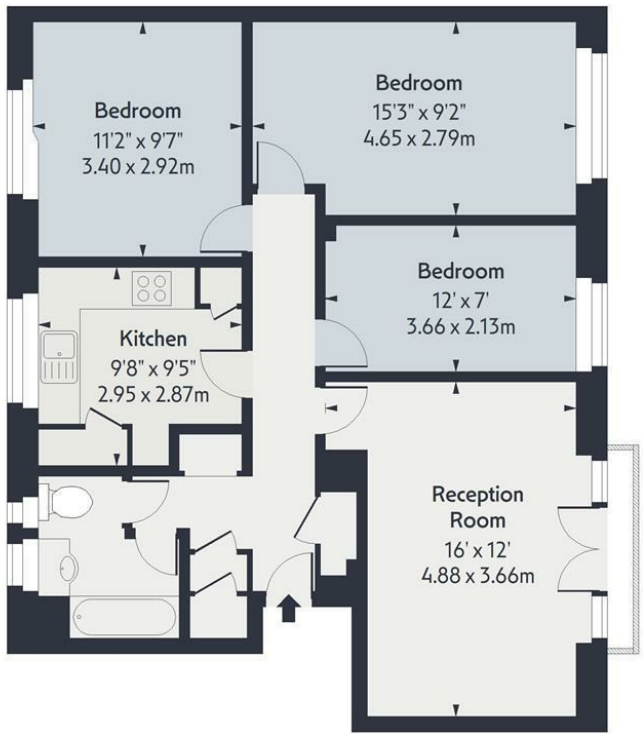


Manor Road, N16

Approx. Gross Internal Area 831 Sq Ft - 77.20 Sq M

OAKWOOD



First Floor

Floor Area 831 Sq Ft - 77.20 Sq M



Measured according to RICS IPMS2. Floor plan is for illustrative purposes only and is not to scale. Every attempt has been made to ensure the accuracy of the floor plan shown, however all measurements, fixtures, fittings and data shown are an approximate interpretation for illustrative purposes only. 1 sq m = 10.76sq feet.
lpaplus.com Date: 21/8/2025

Whilst every attempt has been made to ensure the accuracy of the floor plan contained here, measurements of doors, windows, rooms and any other items are approximate and no responsibility is taken for any error, omission or mis-statement. This plan is for illustrative purposes only and should be used as such by any prospective purchaser. The services, systems and appliances shown have not been tested and no guarantee as to their operability or efficiency can be given.



£2,500 PCM

A beautifully presented three bedroom apartment set on the first floor of a purpose built development. The property offers bright living space throughout and benefits from a spacious living room with a Juliette balcony overlooking communal gardens, two large double bedroom and a modern separate kitchen.

Manor Road is located within short walking distance of Clissold Park and Church Street with its array of bars, shops and restaurants.

