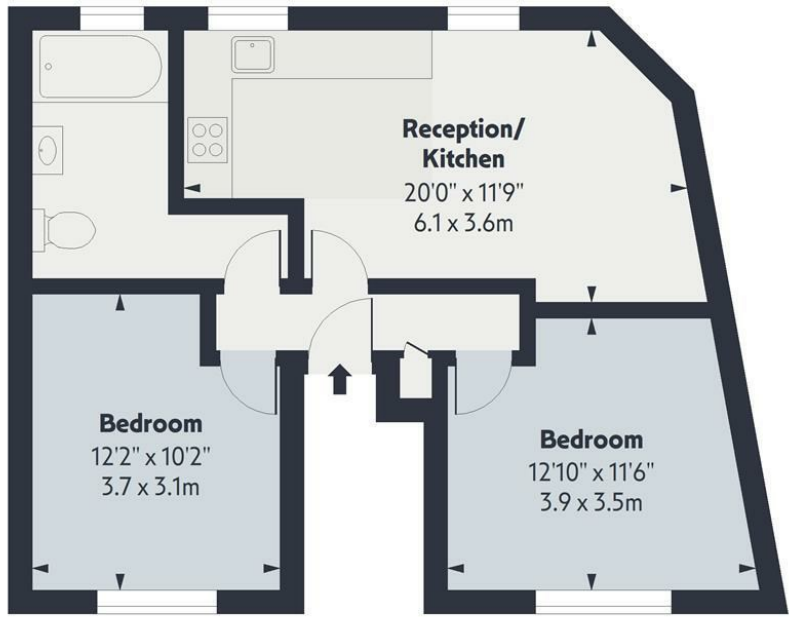


Barbault Road,
Approx. Gross Internal Area 588 Sq Ft - 54.63 Sq M

OAKWOOD



Second Floor
Floor Area 588 Sq Ft - 54.63 Sq M



Measured according to RICS IPMS2. Floor plan is for illustrative purposes only and is not to scale. Every attempt has been made to ensure the accuracy of the floor plan shown, however all measurements, fixtures, fittings and data shown are an approximate interpretation for illustrative purposes only. 1 sq m = 10.76sq feet.
lpaplus.com

Date: 4/7/2025

Whilst every attempt has been made to ensure the accuracy of the floor plan contained here, measurements of doors, windows, rooms and any other items are approximate and no responsibility is taken for any error, omission or mis-statement. This plan is for illustrative purposes only and should be used as such by any prospective purchaser. The services, systems and appliances shown have not been tested and no guarantee as to their operability or efficiency can be given.



£2,000

A modern and spacious two-bedroom apartment set on the top (second) floor of a recently converted property. The flat offers a bright open-plan living area, two well-proportioned double bedrooms, and stylish contemporary finishes throughout. Conveniently located within easy reach of Stoke Newington Church Street, it benefits from excellent transport links and is just a short walk from the green open spaces of Clissold Park.



- Two double bedrooms
- Modern bathroom

- Open plan kitchen/reception
- Close to Church Street

