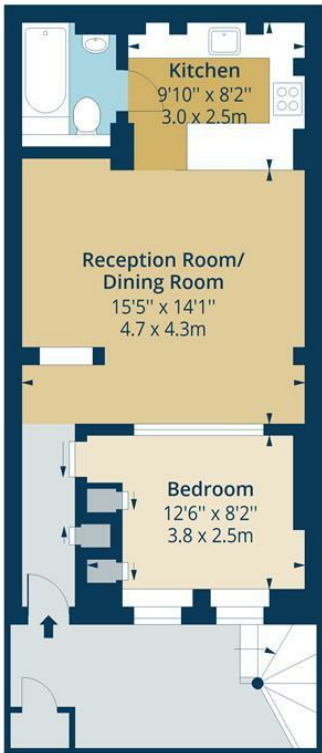


Allen Road, N16
Approx. Gross Internal Area 500 Sq Ft - 46.45 Sq M



Basement Floor
Floor Area 500 Sq Ft - 46.45 Sq M



Measured according to RICS IPMS2. Floor plan is for illustrative purposes only and is not to scale. Every attempt has been made to ensure the accuracy of the floor plan shown, however all measurements, fixtures, fittings and data shown are an approximate interpretation for illustrative purposes only. 1 sq m = 10.76 sq feet.
lpaplus.com Date: 16/10/2023

Whilst every attempt has been made to ensure the accuracy of the floor plan contained here, measurements of doors, windows, rooms and any other items are approximate and no responsibility is taken for any error, omission or mis-statement. This plan is for illustrative purposes only and should be used as such by any prospective purchaser. The services, systems and appliances shown have not been tested and no guarantee as to their operability or efficiency can be given.



Allen Road, N16



£1,600

A spacious one-bedroom basement flat set within a beautiful Victorian property, offering nearly 50 sqm of living space. The flat features its own private entrance, a generous open-plan kitchen and living area, a bathroom, and a bedroom with built-in storage.

Allen Road is ideally situated within walking distance of Church Street, and just moments from the wide selection of bars, shops, and restaurants along Stoke Newington Road and Kingsland Road. Dalston Junction Station is also easily accessible on foot. Offered unfurnished.

