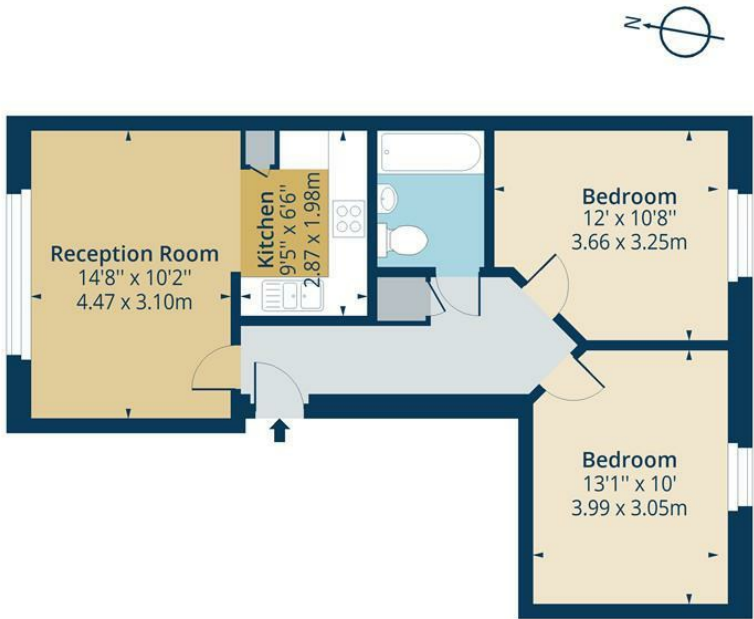


Matthias Road, N16
Approx. Gross Internal Area 603 Sq Ft - 56.02 Sq M



Ground Floor
Floor Area 603 Sq Ft - 56.02 Sq M

For Illustrational Purposes Only - Not To Scale
lpaplus.com

Whilst every attempt has been made to ensure the accuracy of the floor plan contained here, measurements of doors, windows, rooms and any other items are approximate and no responsibility is taken for any error, omission or mis-statement. This plan is for illustrative purposes only and should be used as such by any prospective purchaser. The services, systems and appliances shown have not been tested and no guarantee as to their operability or efficiency can be given.



While we endeavor to make our sales details accurate and reliable, if there is any point which is of particular importance to you, please contact the office and we will be pleased to confirm the position for you. Particularly if contemplating traveling some distance to view the property. All room sizes have been measured with an electronic sonic tape, the accuracy of which cannot be guaranteed. You are advised to make your own checks before contemplating a purchase, especially if an exact measurement is of particular importance to you.



Matthias Road, N16



£2,200

Light and airy two double bedroom flat available in Newington Green. The property is suitable for professional sharers, couples and families alike and boasts a communal roof terrace, private to only five flats.

Located on the corner of Newington Green on the Islington/Hackney border, you couldn't be in a better location. Public transport options are vast, with Dalston Kingsland or Canonbury stations just ten minutes walk away and bus routes into the City and West End on your doorstep.

If you're a keen cyclist, you can store your bike in the private bike shed, accessible to residents only.

Angel, Clissold Park and Church Street are only a stroll away, where you can enjoy an abundance of cafes and restaurants.

oakwoodestateagents.com

48 Stoke Newington Church Street
London N16 ONB
Company No. 2995463, Oakwood Estate Agents Limited T/A Oakwood

Tel 020 7249 1000
Fax 020 7249 2000
www.oakwoodestateagents.com



- TWO DOUBLE BEDROOMS
- BIKE STORAGE

- ROOF TERRACE
- GREAT LOCATION

