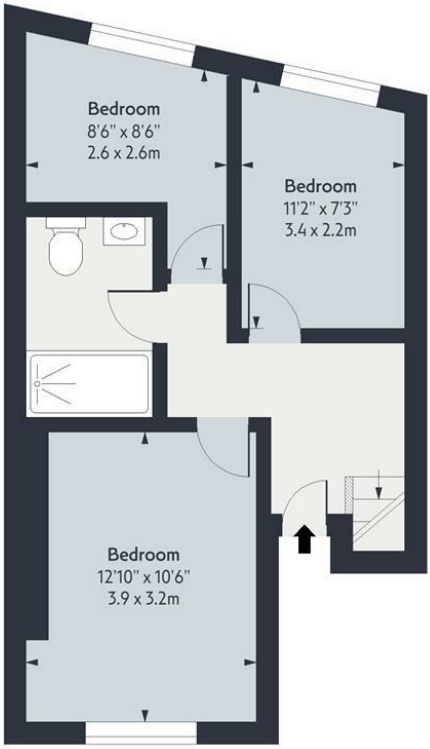


Church Street

Approx. Gross Internal Area 755 Sq Ft - 70.14 Sq M
Approx. Gross Balcony Area 45 Sq Ft - 4.18 Sq M

OAKWOOD



Second Floor

Floor Area 402 Sq Ft - 37.35 Sq M



Third Floor

Floor Area 353 Sq Ft - 32.79 Sq M



Measured according to RICS IPMS2. Floor plan is for illustrative purposes only and is not to scale. Every attempt has been made to ensure the accuracy of the floor plan shown, however all measurements, fixtures, fittings and data shown are an approximate interpretation for illustrative purposes only. 1 sq m = 10.76sq feet.
lpaplus.com

Date: 11/12/2025

Whilst every attempt has been made to ensure the accuracy of the floor plan contained here, measurements of doors, windows, rooms and any other items are approximate and no responsibility is taken for any error, omission or mis-statement. This plan is for illustrative purposes only and should be used as such by any prospective purchaser. The services, systems and appliances shown have not been tested and no guarantee as to their operability or efficiency can be given.



£2,850 Per Month

A well-presented three-bedroom split-level flat arranged over the second and third floors of a period building. The property is in excellent condition throughout and includes a modern kitchen and bathroom, three bedrooms, a spacious open-plan living area and a balcony.

Located on Church Street, the flat is close to a wide range of shops, bars and restaurants. Transport links are easily accessible, with the 73 bus route and Stoke Newington Overground station within walking distance.



- THREE BEDROOMS
- BALCONY
- SPLIT LEVEL

