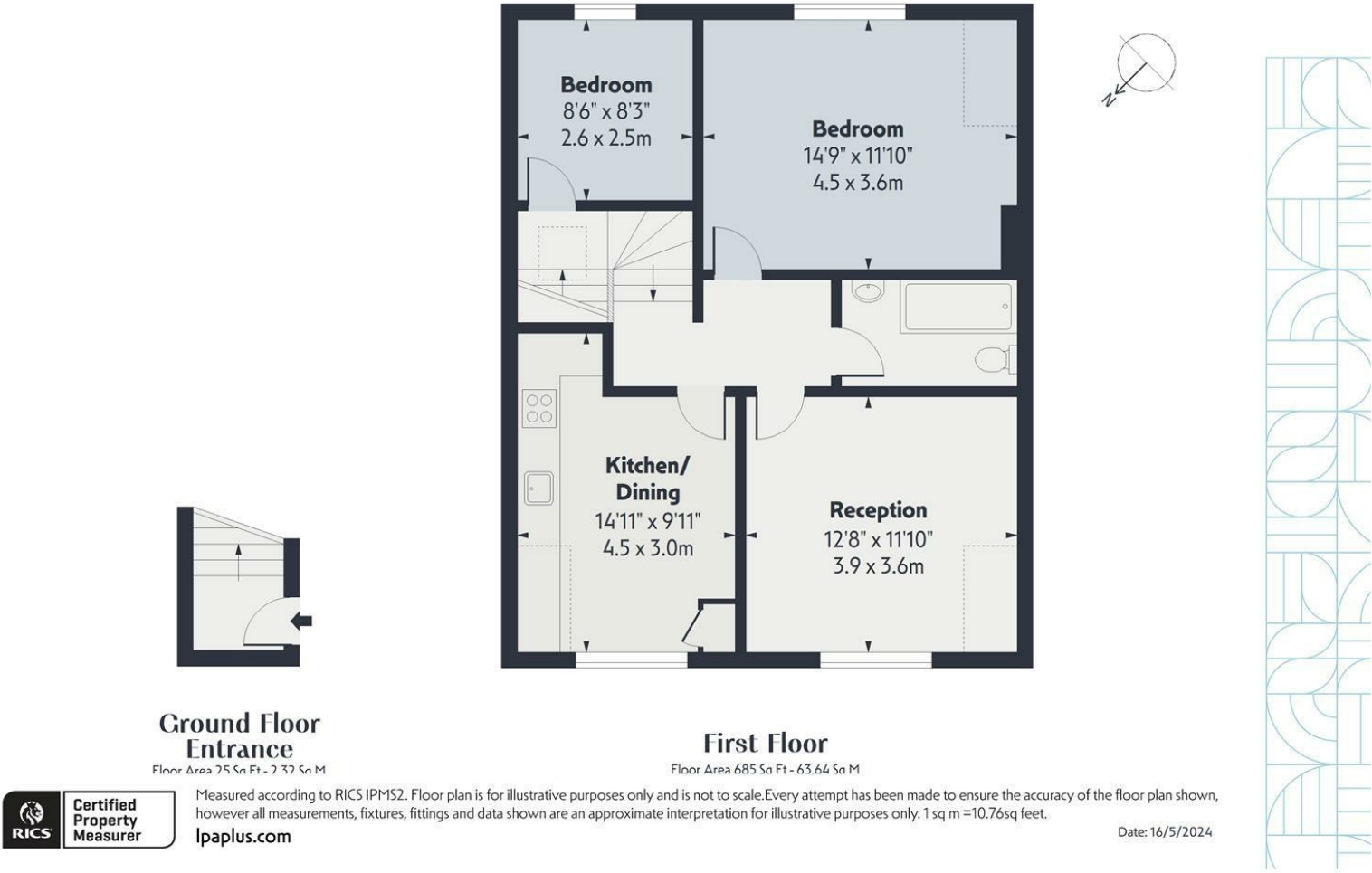


Alkham Road, N16
Approx. Gross Internal Area 710 Sq Ft - 65.96 Sq M

OAKWOOD



Whilst every attempt has been made to ensure the accuracy of the floor plan contained here, measurements of doors, windows, rooms and any other items are approximate and no responsibility is taken for any error, omission or mis-statement. This plan is for illustrative purposes only and should be used as such by any prospective purchaser. The services, systems and appliances shown have not been tested and no guarantee as to their operability or efficiency can be given.



£2,250 Per Month

A spacious two bedroom, split level flat set on the top floors of this mid terrace Victorian house. Internally the flat has been maintained to a good standard and comprises of two bedrooms, spacious reception, large kitchen and bathroom. Alkham Road is located just off Northwold Road moments away from the open green space of Stoke Newington Common and within a short stroll to local bus routes into the City and West End as well as Church Street with its array of independent bars, shops and restaurants.



- SPLIT LEVEL
- AVAILABLE 29TH JULY

- TWO BEDROOM
- GREAT LOCATION

