



St. Marys Close, Hessle, HU13

£154,950



 2  2  2  B Band: D

- Spacious First-Floor Apartment
- Well Presented, In Need of TLC/Updating
- 2 Bedrooms & 2 Bath/Shower Rooms
- 2 Reception Rooms
- Gas Central Heating & PVC Double Glazing
- One Parking Space & Visitor Parking
- Stunning Location Overlooking Humber
- Chain-Free!





Offered with no chain, this spacious first-floor apartment is one of the most desirable in this building with stunning views over the beautiful Humber estuary, the living rooms facing south and the bedrooms facing north. The apartment itself comprises an entrance porch, hallway, kitchen, living room, dining room, principal bedroom with en-suite shower room, second double bedroom, and bathroom. The apartment, which is in need of some TLC and updating, is fitted with PVC double glazing and gas central heating. This is a wonderful apartment in a superb Hessle location, so check out the video tours and then contact Hudsons to book your viewing!

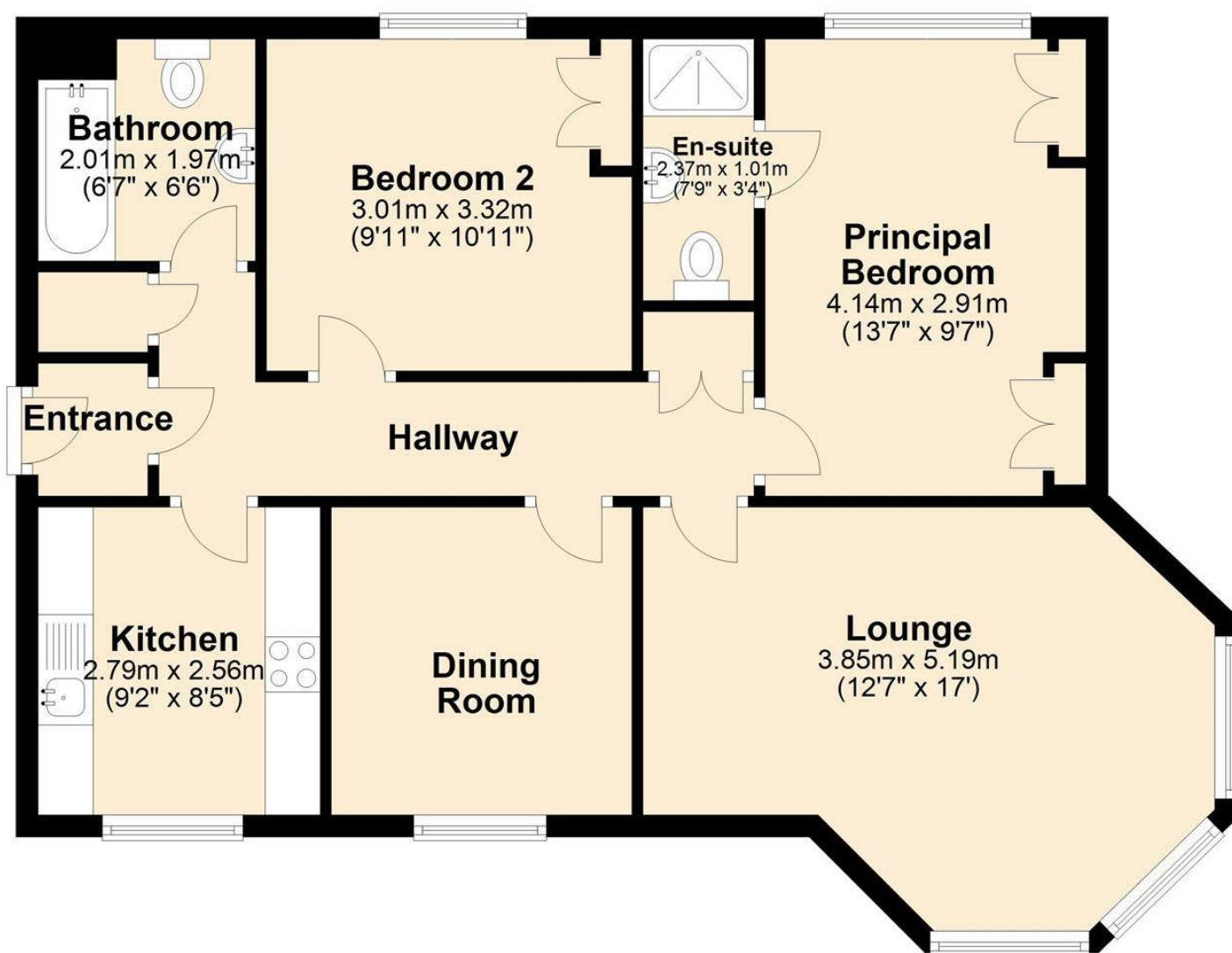


FIXTURES & FITTINGS: Everything in the property is included in the sale. The property is sold as seen. **TENURE:** This is a leasehold property with a 999-year lease commencing on the 1st January 1998; the ground rent is merely a 'peppercorn' rent and is fixed for the term of the lease. Service charges tend to be variable and we understand that service charge is currently approximately £936/year charged at £78/month. The Leasehold land shown edged with red on the plan shown represents this first-floor apartment as well as one parking space.





Floor Plan



MEASUREMENTS: Please note that all measurements are approximate. **STAMP DUTY:** Many property purchases are subject to Stamp Duty Land Tax, and the rules governing stamp duty and the levies imposed are complex. HM Revenue & Customs have an online calculator to assist you in calculating your stamp duty liability (<https://www.gov.uk/stamp-duty-land-tax>) but please always check with your solicitor. **COPYRIGHT:** All photographs and images are the exclusive property of Hudson Property Angels Limited and are protected by copyright law. The images may not be reproduced, copied, transmitted or manipulated without the written consent of a director of Hudson Property Angels Limited.