



Birchway, Hayes, UB3 3PA

CHARRISON DAVIS ARE THE VENDORS SOLE AGENT FOR THIS 3 BEDROOM SEMI DETACHED HOUSE OFFERING MUCH POTENTIAL.

WITH NO ONWARD CHAIN THIS DELIGHTFUL PROPERTY HAS AN ENTRANCE HALL, DOWNSTAIRS BATHROOM, LOUNGE, AND KITCHEN. UPSTAIRS HAS 3 BEDROOMS AND LOFT SPACE SUITABLE FOR CONVERSION STPP. OUTSIDE HAS A LAWNED REAR GADEN WITH SIDE ACCESS GATE. TO THE FRONT IS YOU HAVE A LAWNED GARDEN WITH SCOPE TO CREATE A DRIVE STPP.

Birchway is set within a popular residential area close to Minet Primary School and convenient for Hayes Town shopping and Elizabeth line station.

Asking Price £499,950

Tel: 020 8573 9922 Fax: 020 8569 3495

254 Kingshill Avenue, Hayes, Middlesex, UB4 8BZ

Email: info@charrisondavis.com www.charrisondavis.co.uk

29. Birchway, Hayes, UB3 3PA



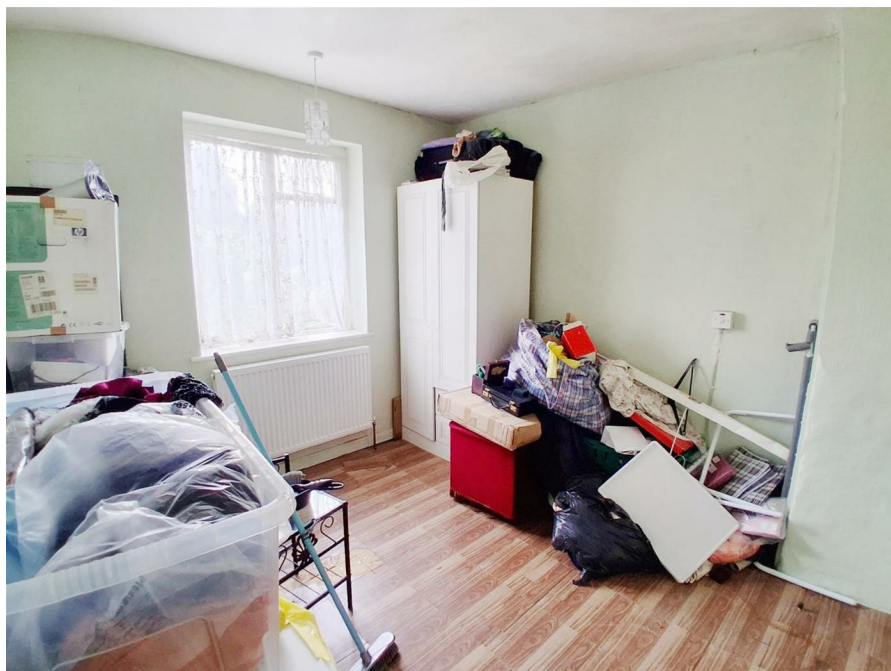
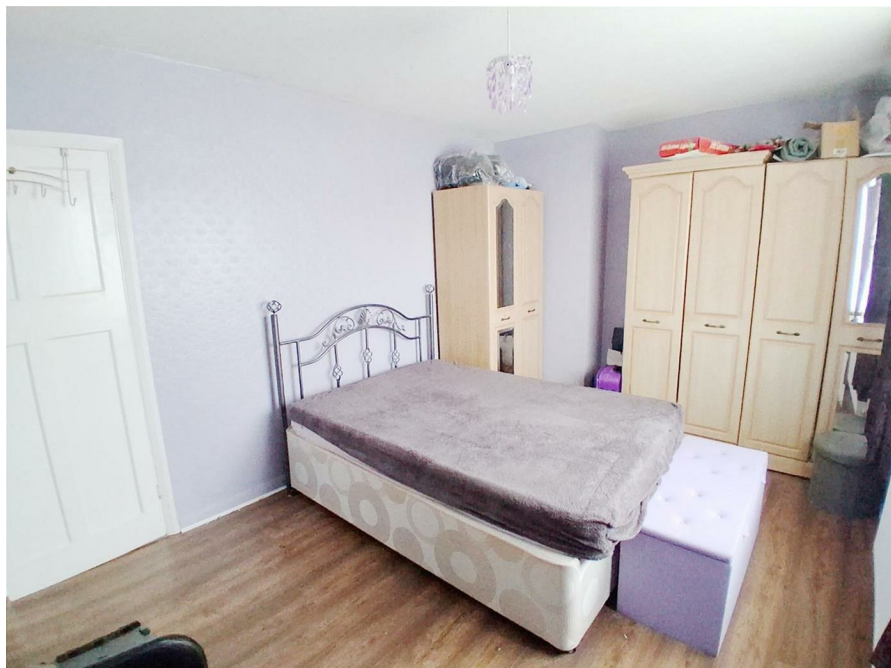
29. Birchway, Hayes, UB3 3PA



29. Birchway, Hayes, UB3 3PA



29. Birchway, Hayes, UB3 3PA



29. Birchway, Hayes, UB3 3PA



29. Birchway, Hayes, UB3 3PA



Energy Efficiency Rating

	Current	Potential
<p><i>Very energy efficient - lower running costs</i></p> <p>(92 plus) A</p> <p>(81-91) B</p> <p>(69-80) C</p> <p>(55-68) D</p> <p>(39-54) E</p> <p>(21-38) F</p> <p>(1-20) G</p> <p><i>Not energy efficient - higher running costs</i></p>	<p>66</p>	<p>75</p>

England & Wales

EU Directive
2002/91/EC



29. Birchway, Hayes, UB3 3PA

