



Bury Avenue, Hayes, UB4 8LF

CHARRISON DAVIS are pleased to offer For Sale this bright and spacious GROUND FLOOR 2 DOUBLE BEDROOM PURPOSE BUILT MAISONETTE.

This exceptional property benefits from its own front garden and rear gardens with wonderful views across meadows and fields. With gas central heating and new double glazed windows you have an entrance hall with doors to all rooms, fitted kitchen, large lounge with space for dining table, 2 double bedrooms and a modern shower room.

Bury Avenue is set within a much sought residential area of North Hayes just a few hundred yards from Charville Primary school with excellent transport links for Hayes Town Elizabeth line station, Northolt Central line station, A40 London and Uxbridge.

GREAT FIRST TIME BUY OR RENTAL INVESTMENT!

Asking Price £309,950

Tel: 020 8573 9922 Fax: 020 8569 3495

254 Kingshill Avenue, Hayes, Middlesex, UB4 8BZ

Email: info@charrisondavis.com www.charrisondavis.co.uk

59 Bury Avenue, Hayes, UB4 8LF



59 Bury Avenue, Hayes, UB4 8LF



59 Bury Avenue, Hayes, UB4 8LF



59 Bury Avenue, Hayes, UB4 8LF



59 Bury Avenue, Hayes, UB4 8LF

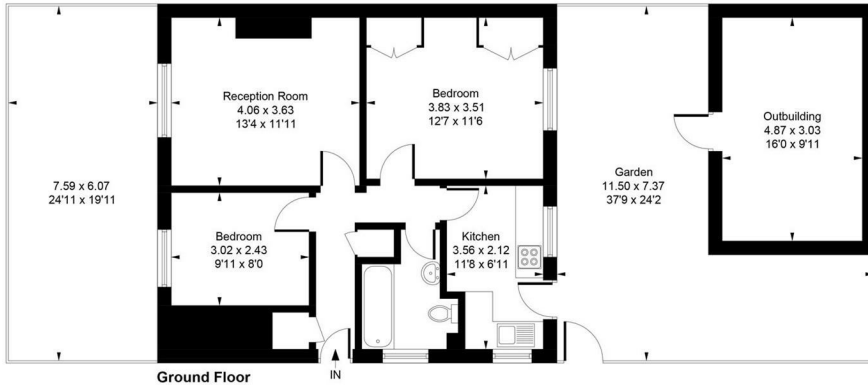


59 Bury Avenue, Hayes, UB4 8LF



59 Bury Avenue, Hayes, UB4 8LF

Approximate Gross Internal Area = 56.55 sq m / 609 sq ft
Outbuilding = 14.96 sq m / 161 sq ft
Total = 71.51 sq m / 770 sq ft



Whilst every attempt has been made to ensure the accuracy of the floor plan contained here, measurements of doors, windows, rooms and any other items are approximate and no responsibility is taken for any error, omission, or mis-statement. This plan is for illustrative purposes only and should be used as such by any prospective purchase.

© Vizion Property Marketing Produced for Charrison Davis

Energy Efficiency Rating

| | Current | Potential |
|--|---------|-----------|
| <i>Very energy efficient - lower running costs</i> | | |
| (92 plus) A | | |
| (81-91) B | | |
| (69-80) C | | 74 |
| (55-68) D | 68 | |
| (39-54) E | | |
| (21-38) F | | |
| (1-20) G | | |
| <i>Not energy efficient - higher running costs</i> | | |

England & Wales

EU Directive
2002/91/EC



59 Bury Avenue, Hayes, UB4 8LF

