



Middlewich House, Northolt, Middlesex, UB5 6GF

Long Lease in excess of 150 years for this fabulous 2 double bedroom / 2 bathroom, 3rd floor flat (top) with an underground & secure private car park + allocated bay.

This wonderful 'Grand Union Village' canal side development is located near to a choice of popular schools, convenient shopping parades plus a large 'Lidl' and Tesco Superstore.

Main bus route links are on hand for Northolt station, Greenford, Ruislip, Harrow, Southall, Heathrow, Uxbridge & Hayes/Harlington station (Elizabeth underground line).

This modern & spacious property offers contemporary living space with gas central heating & double glazed windows, fitted carpets and excellent decor. The property is accessed via a well maintained & carpeted communal entrance with a lift service & stairs to all floors. A private front door opens into an inner hall with doors to all rooms with the accommodation consisting of a large open plan & double aspect lounge/kitchen + 2 'Juliet' style balconies, modern bathroom and 2 double bedrooms (master bedroom with en-suite shower room).

Viewing highly recommended!

£275,000

Tel: 020 8573 9922 Fax: 020 8569 3495

254 Kingshill Avenue, Hayes, Middlesex, UB4 8BZ

Email: info@charrisondavis.com www.charrisondavis.co.uk

31 Middlewich House, Northolt, Middlesex UB5 6GF

Communal Entrance

Security entrance phone system, carpeted hall with stairs & lift service to all 3 floors + underground private car park.

Inner Hall

Private front door to inner hallway, storage cupboard housing central heating boiler and hot water cylinder, double radiator & fitted carpets through to bedrooms and lounge.



31 Middlewich House, Northolt, Middlesex UB5 6GF

Open Plan Lounge/Kitchen

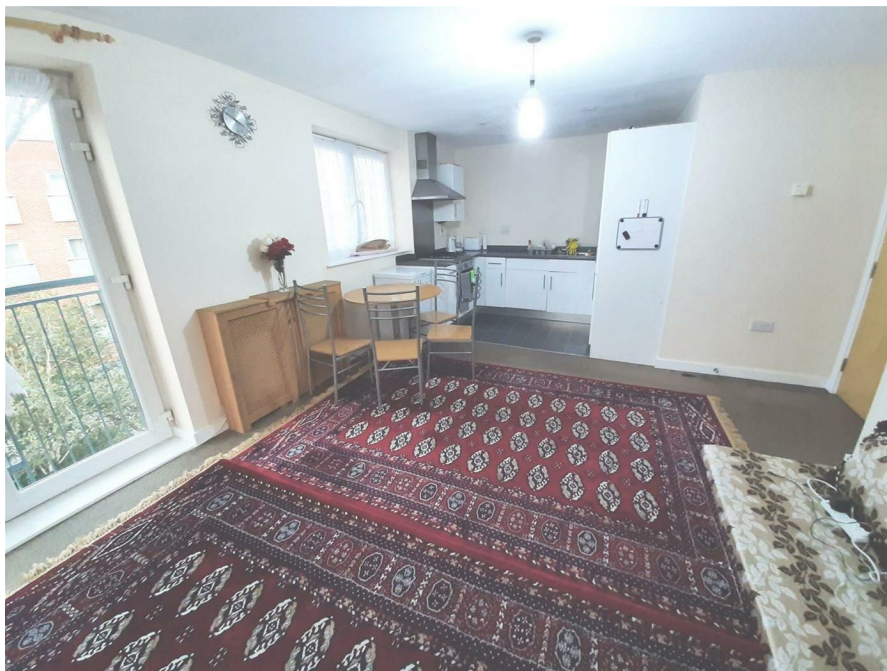
21'11" x 12'1" (6.70 x 3.70)

Lounge Area- 2 double radiators, double aspect with 2 'Juliet' style balconies, both with double glazed double doors.

Kitchen Area- Fitted wall & base units, stainless steel sink with mixer tap, integrated electric oven + gas hob & extractor hood, fridge/freezer & washing machine, downlights, double glazed window to side.



Reverse View



31 Middlewich House, Northolt, Middlesex UB5 6GF

Bedroom 1

15'1" x 9'0" (4.60 x 2.75)

Fitted wardrobes to 1 wall + dressing unit, double radiator, double glazed windows to rear.



Reverse View



31 Middlewich House, Northolt, Middlesex UB5 6GF

En-Suite

Walk-in tiled shower, hand wash basin, low level wc, heated towel rail, extractor fan.



Bedroom 2

11'5" x 8'8" (3.50 x 2.65)

Double glazed windows to rear, double radiator.



31 Middlewich House, Northolt, Middlesex UB5 6GF

Bathroom

Modern suite comprising panelled bath + tiled surround, hand wash basin, low level wc, extractor fan, heated towel rail.



Outside

Communal gardens with picturesque canal footpaths and marina.

Private Underground Car park

Gated with 1 allocated space.

31 Middlewich House, Northolt, Middlesex UB5 6GF

Marina



Canal Footpaths



31 Middlewich House, Northolt, Middlesex UB5 6GF

Canal Side

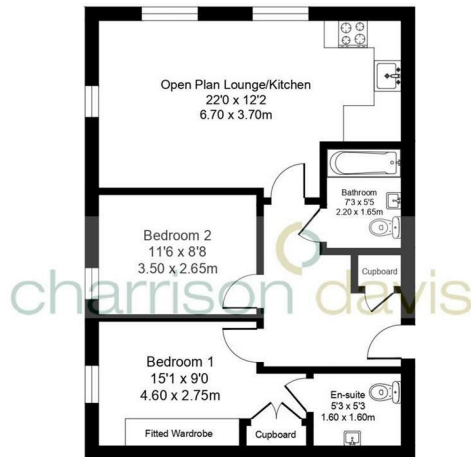


Walk Ways




31 Middlewich House, Northolt, Middlesex UB5 6GF

Floor Plan



Total Area Approx. 62.9 sq meters (677.91 sq feet)

Energy Efficiency Rating

	Current	Potential
<p><i>Very energy efficient - lower running costs</i></p> <p>(92 plus) A</p> <p>(81-91) B</p> <p>(69-80) C</p> <p>(55-68) D</p> <p>(39-54) E</p> <p>(21-38) F</p> <p>(1-20) G</p> <p><i>Not energy efficient - higher running costs</i></p>	<p>78</p>	<p>79</p>
<p>England & Wales</p>	<p>EU Directive 2002/91/EC</p>	

31 Middlewich House, Northolt, Middlesex UB5 6GF

