



Wilmot Street, London, , E2 0BU

£380,000

Elms Estates are pleased to offer to the market For Sale this One Double Bedroom Apartment located on the Upper Ground Floor of this Beautiful Victorian Building.

The property is situated just off Bethnal Green Road on a delightful street with numerous Green Spaces such as Weaver's Fields, Bethnal Green Gardens, Museum Gardens, St Bartholmew Gardens within easy reach. It has Excellent Transport Links such as Bethnal Green Underground & Overground Stations close by. It is a short walk to the famous Brick Lane & Shoreditch High Street and close to many superb Local Amenities and an abundance of Shops, Restaurants and Cafes.

Internally the property has a spacious lounge with modern fitted kitchen, One double bedroom and contemporary shower room and is very own parking space.

For more information or to arrange a viewing please do not hesitate to call in and speak with one of our Property Consultants.



Reception Room
16'4" x 11'9" (5.0 x 3.6)

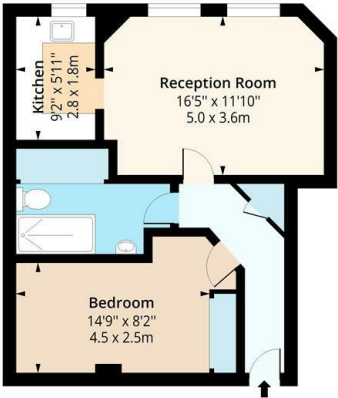
Kitchen
9'2" x 5'10" (2.8 x 1.8)

Bedroom
14'9" x 8'2" (4.5 x 2.5)

Shower Room



Wilmot Street
Approx. Gross Internal Area 565 Sq Ft - 52.49 Sq M



First Floor
Floor Area 565 Sq Ft - 52.49 Sq M

Floor plan is for illustrative purposes only and is not to scale. Every attempt has been made to ensure the accuracy of the floor plan shown, however all measurements, fixtures, fittings and data shown are an approximate interpretation for illustrative purposes only.
lpaplus.com

Energy Efficiency Rating			Environmental Impact (CO ₂) Rating		
	Current	Potential		Current	Potential
Very energy efficient - lower running costs			Very environmentally friendly - lower CO ₂ emissions		
(92 plus) A			(92 plus) A		
(81-91) B			(81-91) B		
(69-80) C			(69-80) C		
(55-68) D			(55-68) D		
(39-54) E			(39-54) E		
(21-38) F			(21-38) F		
(1-20) G			(1-20) G		
Not energy efficient - higher running costs			Not environmentally friendly - higher CO ₂ emissions		
England & Wales	EU Directive 2002/91/EC		England & Wales	EU Directive 2002/91/EC	