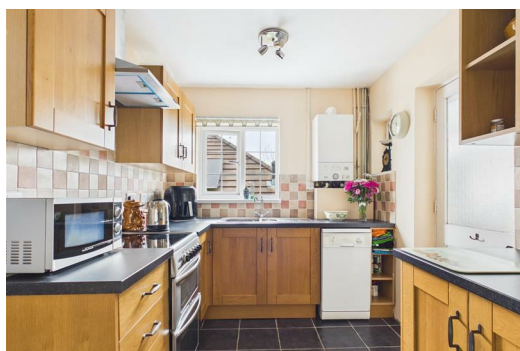




Olive

ESTATE AGENTS



5 Nye Close, Cheddar, BS27 3PB £265,000

*** WELL PRESENTED SEMI DETACHED BUNGALOW *** TWO DOUBLE BEDROOMS *** BATHROOM ***
SHOWER ROOM *** UTILITY AREA *** LIVNG ROOM *** KITCHEN *** CONSERVATORY *** LOW
MAINTENANCE REAR GARDEN WITH SIDE ACCESS TO THE FRONT *** OFF STREET PARKING FOR TWO
CARS *** WALKING DISTANCE TO THE LOCAL SCHOOLS AND CENTRE OF CHEDDAR WITH ALL ITS
AMENITIES AND SHOPS *** EPC D *** COUNCIL TAX BAND B *** FREEHOLD *** PLEASE CLICK ON OUR
VIDEO TOUR FOR ROOM DESCRIPTIONS ***

Entrance Hall



Bedroom One



Bedroom Two



Lounge



Kitchen



Family Bathroom



Sun Room



Shower Room



Garden



To The Front of The Property



Approximate total area⁽¹⁾
715 ft²

(1) Excluding balconies and terraces

Calculations reference the RICS IPMS 3C standard. Measurements are approximate and not to scale. This floor plan is intended for illustration only.

GIRAFFE360

