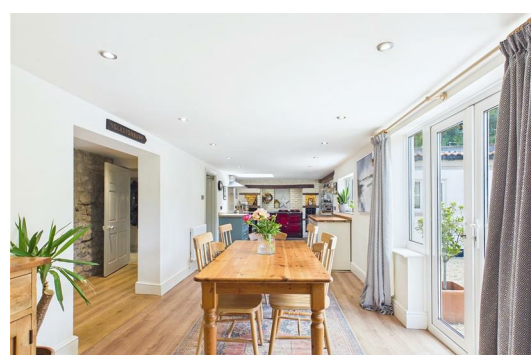




# Olive

ESTATE AGENTS



## Elm Tree Farm Jarvis Lane, Highbridge, TA9 4HS £1,150,000

\*\*\* ABSOLUTELY SPECTACULAR DETACHED FARMHOUSE WITH JUST UNDER HALF AN ACRE OF LAND \*\*\*  
DETACHED ONE BEDROOM AIR BnB \*\*\* LARGE OUTBUILDING / WORKSHOP \*\*\* AMPLE OFF STREET  
PARKING \*\*\* LIVING ROOM \*\*\* FAMILY ROOM \*\*\* SNUG \*\*\* KITCHEN / DINING & FAMILY ROOM \*\*\*  
CLOAKROOM \*\*\* UTILITY ROOM \*\*\* PANTRY \*\*\* FOUR BEDROOMS \*\*\* MAIN BEDROOM WITH SHOWER  
ROOM \*\*\* FAMILY BATHROOM \*\*\* DETACHED COTTAGE / AIR BnB WITH ONE BEDROOM, BATHROOM  
AND A KITCHEN / LIVING FAMILY ROOM \*\*\* EPC BAND E \*\*\* COUNCIL TAX BAND G \*\*\* FREEHOLD \*\*\*





Floor 0 Building 1



Floor 1 Building 1



Floor 0 Building 2

Approximate total area<sup>(1)</sup>  
2935 ft<sup>2</sup>

(1) Excluding balconies and terraces

Calculations reference the RICS IPMS 3C standard. Measurements are approximate and not to scale. This floor plan is intended for illustration only.

GIRAFFE360

