



Olive

ESTATE AGENTS



The Well Cottage St. Marys Street, Axbridge, BS26 2BN Offers in excess of £499,950

*** BEAUTIFUL COTTAGE WITHIN THE HEART OF AXBRIDGE TOWN CENTRE *** WONDERFULLY PRESENTED THROUGHOUT WITH A GARDEN AND TERRACE TO THE REAR *** LIVING ROOM WITH AN FIREPLACE & LOG BURNER *** LARGE KITCHEN / DINING & FAMILY ROOM WITH FRENCH DOORS LEADING OUT TO THE REAR GARDEN *** SNUG / 2ND SITTING ROOM / BEDROOM FOUR *** THREE BEDROOMS & FAMILY BATHROOM *** HUGE MASTER BEDROOM *** ON STREET PARKING *** EPC D *** COUNCIL TAX BAND D *** FREEHOLD ***

This beautifully presented cottage is ideally located in the heart of Axbridge town centre, offering a charming blend of character and modern comfort. The property features a spacious living room complete with a fireplace and log burner, a large open-plan kitchen, dining, and family room with French doors opening onto a rear garden and terrace—perfect for entertaining. Additional living space includes a versatile snug that can serve as a second sitting room or fourth bedroom. Upstairs, there are three well-sized bedrooms including a particularly large master, as well as a family bathroom.

Entrance Hall

Access through a wooden glazed stable door, tiled floor, radiator, ceiling light, openings to inner hallway, the dining room, kitchen and a door leading to the living room.



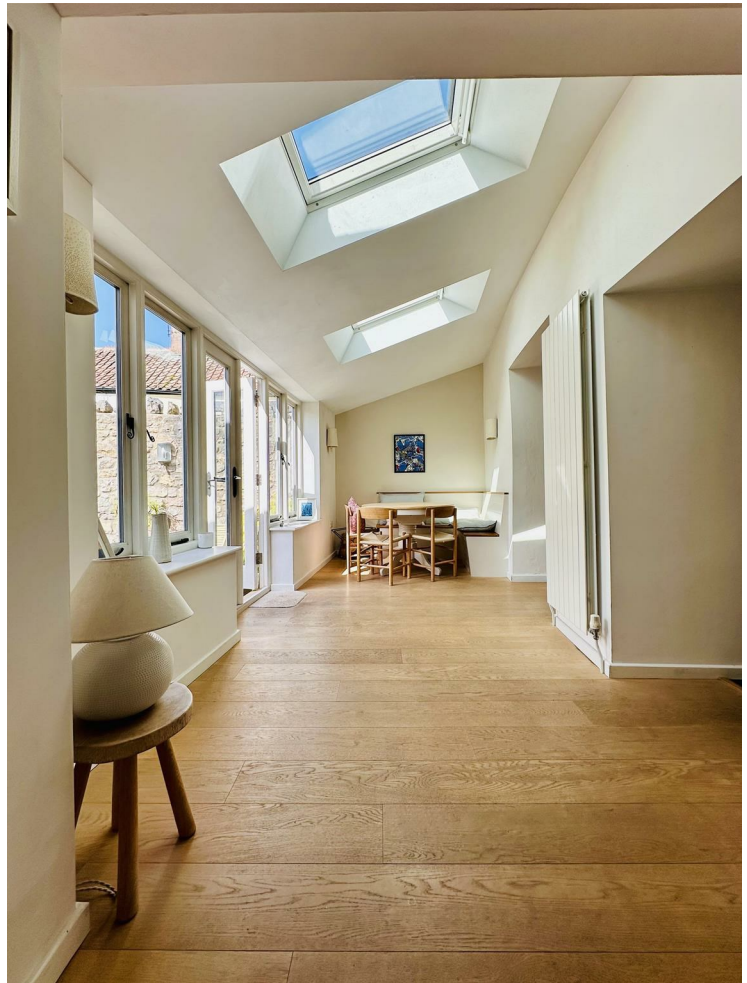
Kitchen/Family Dining Room 18'7 x 27'8 (5.66m x 8.43m)

A very large L-shaped rear aspect light and airy room with wooden double-glazed windows and French doors leading out to the rear terrace and garden areas. Exposed original ceiling beams, ceiling light features with rotating spotlights, wall light points, feature vertical radiator, 2 UPVC Velux roof lights over the dining area. Fitted with a range of base and eye level units with wooden screw edge work surfaces over, inset 1 bowl sink with adjacent drainer and mixer tap, radiator, space and plumbing for washing machine, dishwasher, space and electric point for a range cooker within the old inglenook style fireplace which has tiled walls and a wooden beam over. Solid oak wooden flooring, window seat and lovely built-in seating and dining area to the far end.

Living Room

17 x 10'6 (5.18m x 3.20m)

A front aspect wooden glazed bay window, exposed original ceiling beam, wall lights, feature vertical radiator, tv point and a beautiful inglenook fireplace with cast iron wood burner, wooden beam over and a flagstone hearth.







Inner Hallway

Ceiling light, stairs leading to first floor landing with useful understairs storage cupboard and a door leading to a snug/family room.

Snug/Family Room

8'11 x 12'4 (2.72m x 3.76m)

Front aspect room with wooden glazed bay window, ceiling light with a decorative ceiling rose, radiator, parquet wooden flooring and a feature fireplace currently with an electric convector fire and original flagstone hearth.



First Floor Landing

Ceiling light, doors to 1, 2, 3 and family bathroom and storage cupboard, radiator.



Master Bedroom

17'9 x 18'1 (5.41m x 5.51m)

Absolutely wonderful front to back room with wooden double-glazed windows to the rear and original wooden glazed sash windows to the front, 2 ceiling lights, and 2 radiators.



Bedroom 2

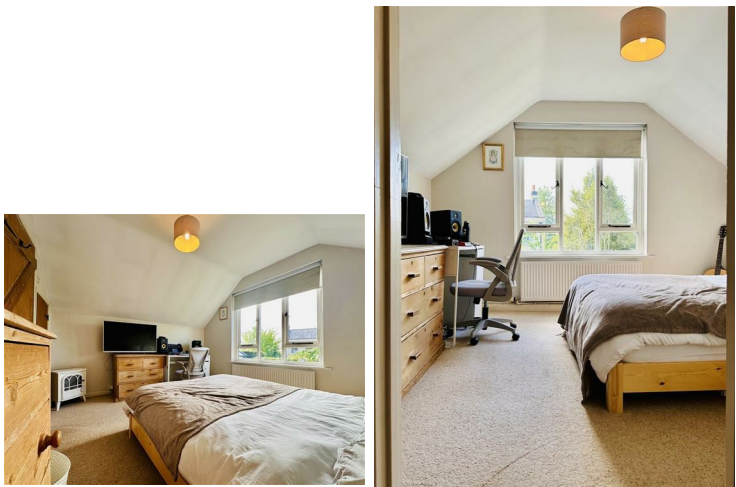
10'7 x 11'7 (3.23m x 3.53m)

Light airy rear aspect room with large wooden double-glazed windows, ceiling light, loft hatch giving access to roof space and a built-in wardrobe.



Family Bathroom
7'8 x 6 (2.34m x 1.83m)

Side aspect room with an obscure double-glazed window, ceiling light, extractor fan, radiator, tiled flooring, low level wc, pedestal hand wash basin with twin taps, panel enclosed bath with tiled surround, glazed shower screen and a wall mounted Mira Shower system.



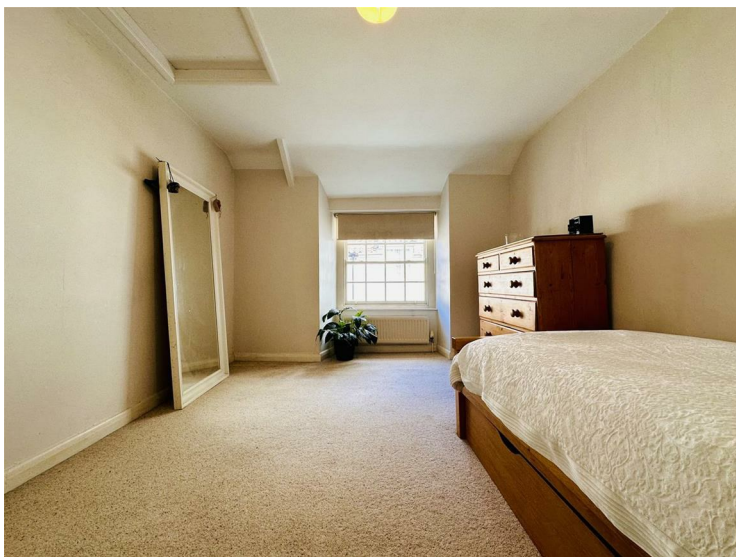
Rear Garden

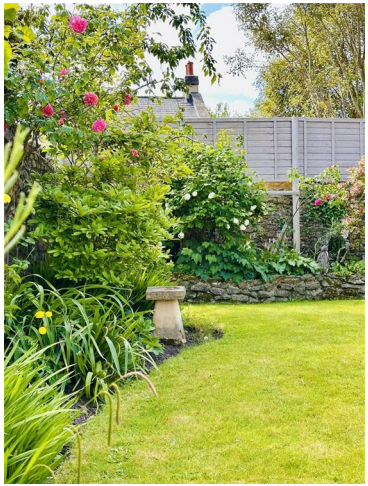
Lovely patio paved terrace with a lovely feature well which leads on to the main garden that is laid to lawn with a range of flowers and shrubs that border the lawn, fully enclosed to all sides with stone walling and with a useful timber built out building to the far corner.



Bedroom 3
12'1 x 9'9 (3.68m x 2.97m)

Front aspect room with original wooden glazed sash window, ceiling light, radiator, loft hatch giving access to roof space.

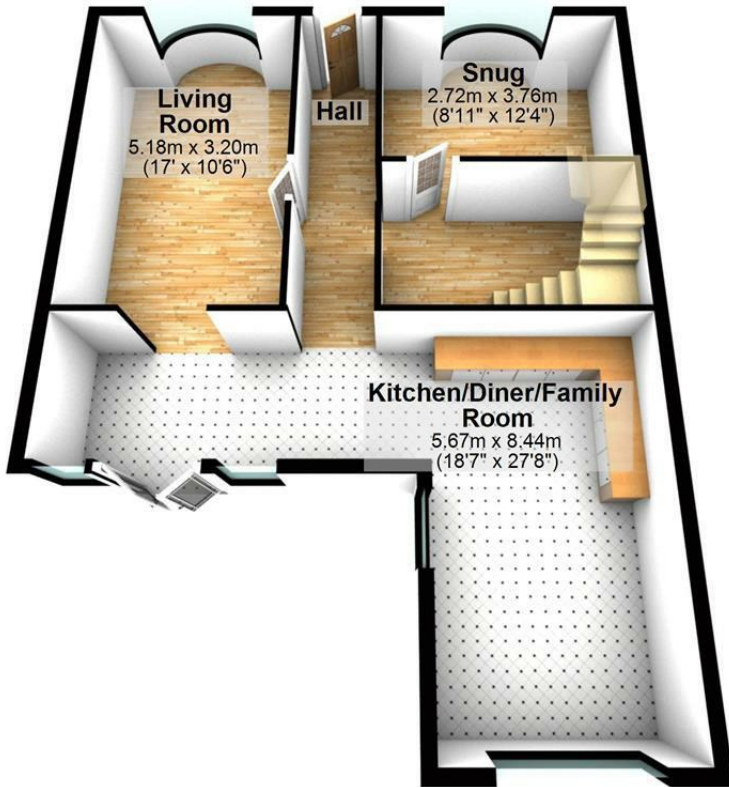




Well Cottage BS26 2BN

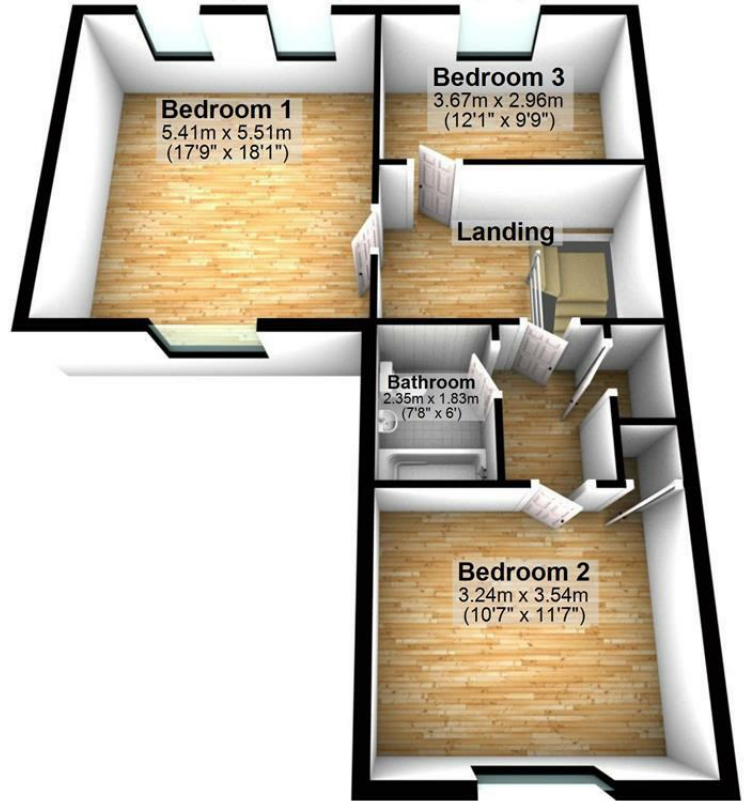
Ground Floor

Approx. 73.9 sq. metres (795.1 sq. feet)



First Floor

Approx. 71.1 sq. metres (765.5 sq. feet)



Total area: approx. 145.0 sq. metres (1560.6 sq. feet)

Energy Efficiency Rating		Current	Potential
Very energy efficient - lower running costs			
(92 plus) A			85
(81-91) B			
(69-80) C			
(55-68) D			
(39-54) E			
(21-38) F		68	
(1-20) G			
Not energy efficient - higher running costs			
England & Wales		EU Directive 2002/91/EC	

Environmental Impact (CO ₂) Rating		Current	Potential
Very environmentally friendly - lower CO ₂ emissions			
(92 plus) A			
(81-91) B			
(69-80) C			
(52-68) D			
(39-54) E			
(21-38) F			
(1-20) G			
Not environmentally friendly - higher CO ₂ emissions			
England & Wales		EU Directive 2002/91/EC	