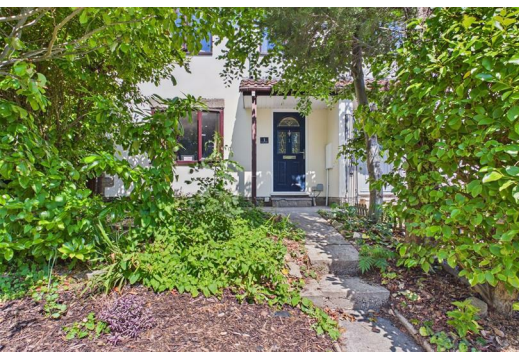




# Olive

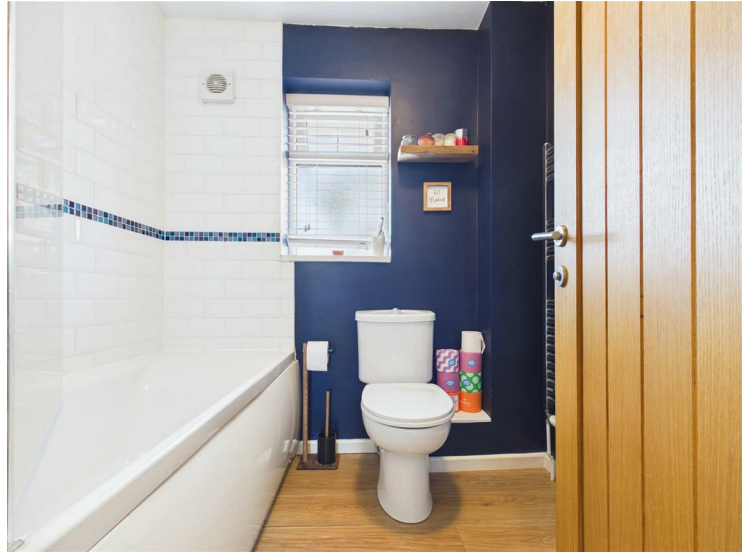
ESTATE AGENTS



## 1 Cheddar Fields, Cheddar, BS27 3EF £350,000

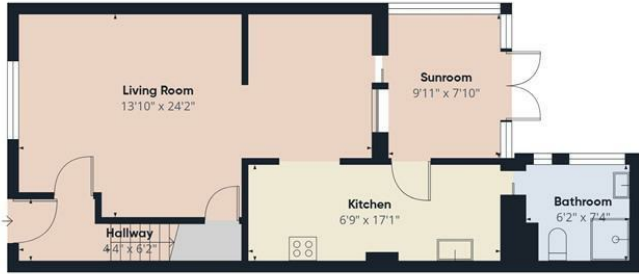
\*\*\* SPACIOUS THREE BEDROOM EXTENDED SEMI DETACHED WITH A ONE ROOM DETACHED ANNEXE \*\*\*  
LARGE LIVING ROOM OPENING TO A DINING AREA \*\*\* KITCHEN \*\*\* CONSERVATORY \*\*\* DOWNSTAIRS  
SHOWER ROOM \*\*\* DETACHED ONE ROOM ANNEXE WITH WC PERFECT FOR OFFICE USE OR  
TEENAGER/GUESTS \*\*\* GARAGE \*\*\* OFF STREET PARKING \*\*\* CENTRAL LOCATION WITHIN WALKING  
DISTANCE TO THE CENTRE OF CHEDDAR AND ALL SCHOOLS, CAFES, RESTAURANTS, BARS,  
SUPERMARKETS ETC \*\*\* EPC C \*\*\* COUNCIL TAX BAND C \*\*\* FREEHOLD \*\*\*











Floor 0 Building 1



Floor 1 Building 1



Floor 0 Building 2



Floor 0 Building 3

Approximate total area<sup>(1)</sup>  
1162 ft<sup>2</sup>

(1) Excluding balconies and terraces

Calculations reference the RICS IPMS 3C standard. Measurements are approximate and not to scale. This floor plan is intended for illustration only.

GIRAFFE360

