



# Olive

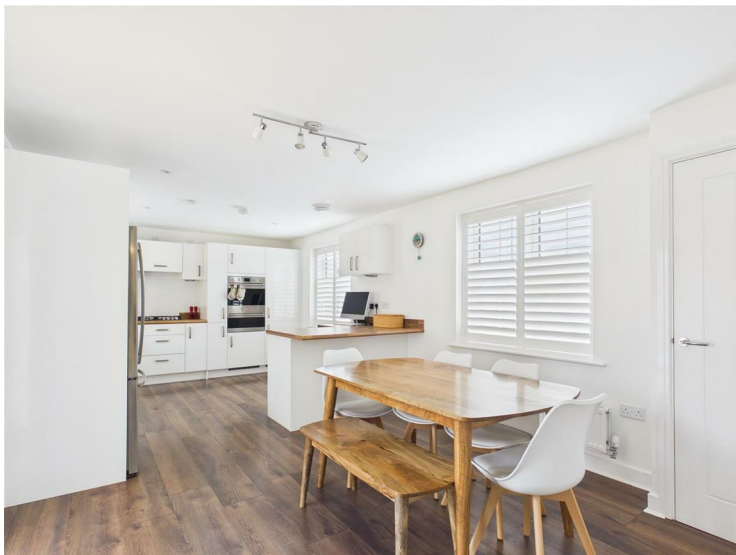
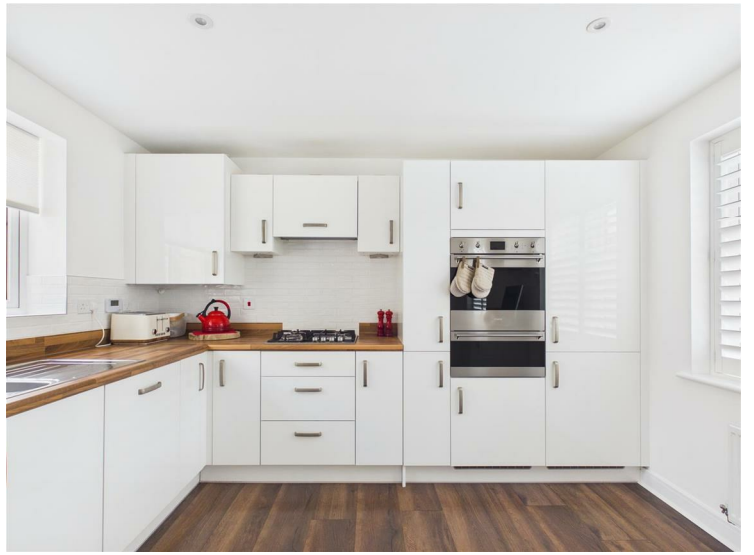
ESTATE AGENTS

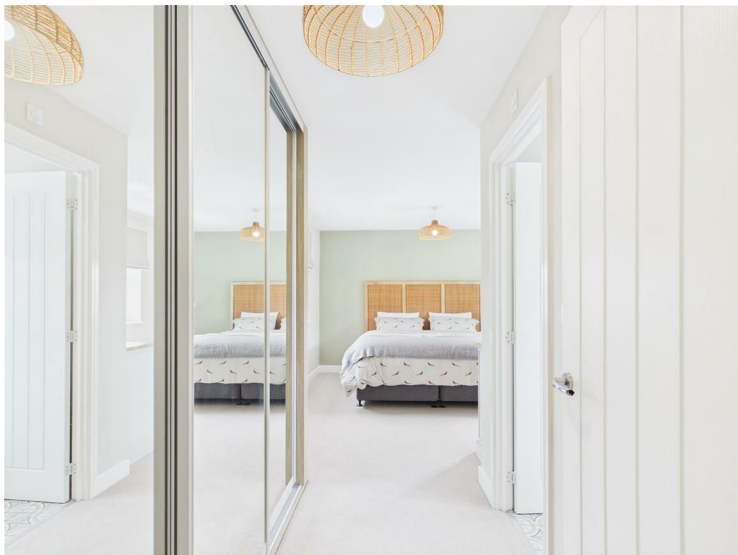


## 6 Drop Court, Cheddar, BS27 3EQ £560,000

\*\*\* STUNNING LARGER THAN AVERAGE 4 BEDROOM DETACHED HOME \*\*\* APPROX 1,600 SQ FT!! \*\*\* SOUTH FACING GARDEN \*\*\* BEAUTIFULLY PRESENTED THROUGHOUT \*\*\* FABULOUS VIEWS TO THE FRONT OF THE HOUSE TOWARDS THE MENDIPS \*\*\* 4 DOUBLE BEDROOMS WITH AN EN SUITE AND DRESSING ROOM AREA TO THE MAIN \*\*\*\* LIVING ROOM \*\*\* SECOND RECEPTION ROOM \*\*\* LARGE KITCHEN/DINER \*\*\* DOWNSTAIRS WC/UTILITY ROOM \*\*\* BESPOKE FITTED BLINDS \*\*\* VIEWING HIGHLY ADVISED TO APPRECIATE THE LOCATION AND SIZE OF THIS HOUSE \*\*\* SINGLE GARAGE \*\*\* OFF STREET PARKING \*\*\* EPC B \*\*\* COUNCIL TAX F \*\*\* FREEHOLD \*\*\*













Floor 0 Building 1



Floor 1 Building 1



Floor 0 Building 2

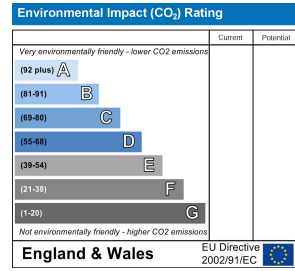
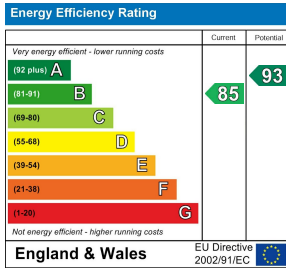
Approximate total area<sup>10</sup>  
1628 ft<sup>2</sup>  
Reduced headroom  
10 ft<sup>2</sup>

(1) Excluding balconies and terraces

Reduced headroom  
..... Below 5 ft

Calculations reference the RICS IPMS 3C standard. Measurements are approximate and not to scale. This floor plan is intended for illustration only.

GIRAFFE360



2C Bath Street, Cheddar, Somerset, BS27 3AA  
Tel: 01934 742966  
enquiries@oliveproperties.uk  
oliveproperties.uk

