

# JOHNSONS & PARTNERS

Estate and Letting Agency



## 4A MILL FIELD CLOSE NOTTINGHAM, NG14 5AA

**GUIDE PRICE £560,000**

Immaculate Four Bedroom Detached Family Home | Open Plan Dining Kitchen | Double Garage | Popular Location | Close to Local Amenities | Extended Living Room | En-Suite | Viewings Advised |

Guide Price - £560,000 - £580,000

Positioned in the tranquil setting of Mill Field Close, Burton Joyce, NG14 5AA, this immaculate four-bedroom detached house presents a perfect marriage of modern luxury and practical family living. Its contemporary interiors, adorned with the finest finishes, create an inviting ambiance that any discerning family or astute buyer will appreciate.

Upon entering, you're welcomed into a splendid open-plan dining kitchen and living area, brilliantly illuminated by bi-fold doors that seamlessly connect the indoors with the stunning low maintenance rear garden. The modern kitchen, equipped with integrated appliances, is the heart of the home, promising both functionality and elegance for entertaining and everyday life.

Comfort meets convenience with the inclusion of a utility room, ground floor WC, and a separate extended living room, offering ample space for relaxation and family time. Additionally, a ground floor study/slug provides a versatile space that can be adapted to your lifestyle needs.

The sleeping quarters do not disappoint, with the main bedroom boasting an exclusive en-suite, whilst bedrooms two and

- Four Bedroom Modern Detached Home
- Open Plan Kitchen/Dining/Living/Family Room
- Two Further Reception Rooms
- Stylish Interior
- Landscaped Gardens
- Multiple Vehicle Driveway & Double Garage
- Cul De sac Location With Open Views
- Sought After Village Location
- EPC - B
- Viewings Highly Advised

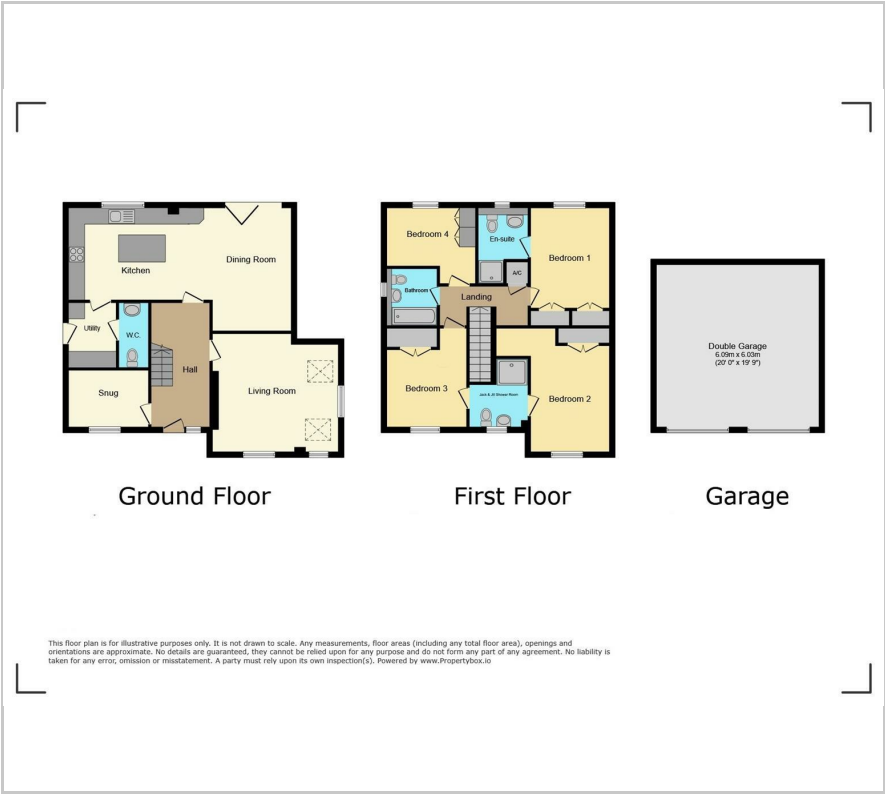
### Viewing

Please contact our Burton Joyce Office on 0115 931 2020 if you wish to arrange a viewing appointment for this property or require further information.





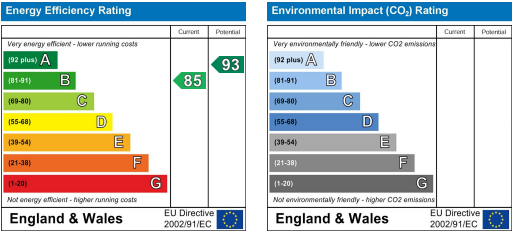
Floor Plan



Area Map



Energy Efficiency Graph



These particulars, whilst believed to be accurate are set out as a general outline only for guidance and do not constitute any part of an offer or contract. Intending purchasers should not rely on them as statements of representation of fact, but must satisfy themselves by inspection or otherwise as to their accuracy. No person in this firm's employment has the authority to make or give any representation or warranty in respect of the property.