



4 Underwood Road, Cadoxton, Neath, Glamorgan, SA10 8BU

£200,000

Situated in a quiet cul-de-sac on a level location within the popular village of Cadoxton, close to local schools, Neath Port Talbot College, access for the M4 motorway and a short drive from all facilities at Neath Town Centre, a well presented extended three bedroom semi detached house which benefits from double glazing and gas central heating throughout and spacious accommodation over 2 floors to include lounge, kitchen/dining room & conservatory to the ground floor and three bedrooms and family bathroom to the first floor. Externally, there is a level rear garden, off road parking to front & side for several vehicles leading to garage with power & light.

Main Dwelling



Entrance Porch 3'5" x 4'0" (1.05 x 1.23)

With stairs to first floor, radiator.

Living Room 22'0" x 14'5" (6.71 x 4.40)



Bay window to front, feature fireplace with marble insert & hearth, gas fire (not tested), ornate dado rail, coved ceiling, two radiators, internal window to rear, window to side.

Kitchen/Dining Room 12'7" x 14'5" (3.84 x 4.41)



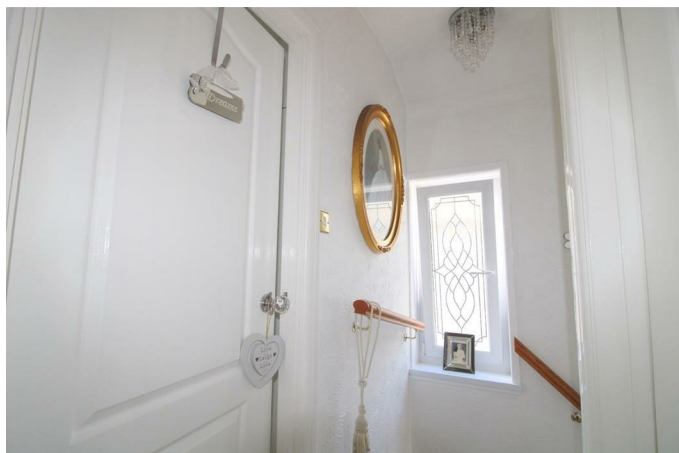
Fitted with a range of hi-gloss base and wall units in white with quartz granite work surfaces, integrated fridge/freezer, dish/washer, washing machine and oven & hob with extractor hood over, part tiled walls, quartz granite tiled flooring, window to rear, coved ceiling, radiator. door to rear leading to conservatory.

Conservatory 11'7" x 11'10" (3.54 x 3.61)



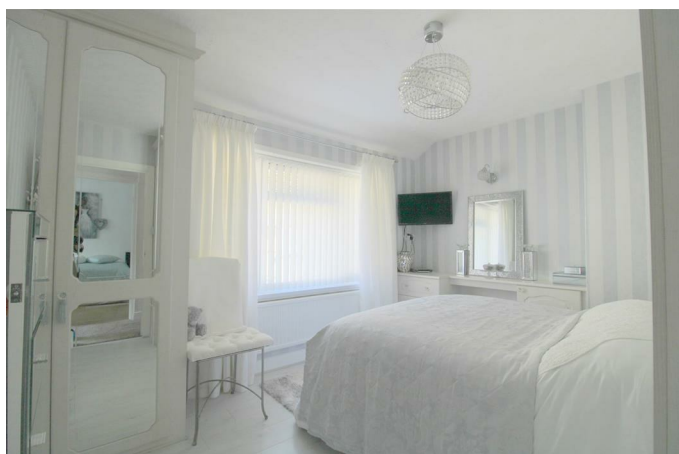
Quartz granite floor tile, radiator.

Landing 14'8" x 2'8" (4.48 x 0.82)



Window to side, access to loft space.

Bedroom One 10'9" x 12'6" (3.28 x 3.83)



Double bedroom with fitted wardrobes and overbed storage cupboards & dressing table, white wood effect laminate flooring, radiator, window to front.

Bedroom Two 10'0" x 8'6" (3.07 x 2.60)



Double bedroom with cupboard housing wall mounted combi boiler, fitted wardrobes, wood effect laminate flooring.

Bedroom Three 8'8" x 7'10" (2.65 x 2.39)



Wood effect laminate flooring, radiator, coved ceiling, window to rear.

Family Bathroom 11'10" 6'2" (3.62 1.90)



Freestanding bath & taps, corner shower cubicle, low level w.c., sink in vanity unit, quartz granite wall tiles, non slip cushion flooring, radiator, access to loft space.

Rear Garden



Level rear garden laid to lawn with small pond and driveway leading to rear garage.

Garage to rear



With power and light

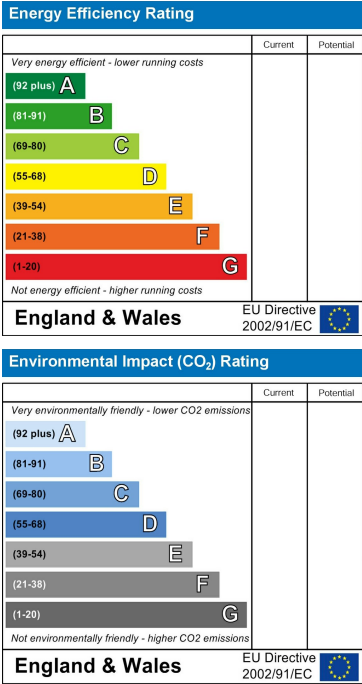
Floor Plan



Area Map



Energy Efficiency Graph



These particulars, whilst believed to be accurate are set out as a general outline only for guidance and do not constitute any part of an offer or contract. Intending purchasers should not rely on them as statements of representation of fact, but must satisfy themselves by inspection or otherwise as to their accuracy. No person in this firms employment has the authority to make or give any representation or warranty in respect of the property.