



alan  
hawkins  
PROPERTY SALES & LETTINGS

alan  
hawkins  
PROPERTY SALES & LETTINGS

Rawlins Park, Avebury, SN8 1RQ

01793 840 222 | [alanhawkins.co.uk](http://alanhawkins.co.uk)





alan  
hawkins

- Brand New Park Home
- On Main Bus Route
- Contemporary Semi-Open Plan Accommodation
- 2 Double Bedrooms
- Parking
- Ready for Immediate Occupation
- Integrated Appliances
- Residential Site for the over 50's
- 40'x19'
- Short Walk To The World Heritage Site of Avebury Stone Circle.

# 11 Rawlins Park Avebury, SN8 1RQ

**Guide price £150,000**

Discover Tranquil Living in the Heart of History - Brand New Park Home in Avebury. Nestled within the breath taking UNESCO World Heritage Site of Avebury, this brand-new 40' x 19' park home offers the perfect blend of modern comfort and timeless charm. Designed with your lifestyle in mind, this stunning residence boasts a partially open-plan living area, seamlessly combining relaxation and functionality.

The contemporary kitchen features a range of sleek integrated appliances and ample space for both cooking and entertaining. The thoughtfully designed layout ensures effortless living, while large windows invite natural light to fill the space, creating a warm and inviting atmosphere. There are two double bedrooms with a built-in wardrobe to bedroom two and a large walk-in wardrobe and en-suite shower room to bedroom one.

Set in the heart of Wiltshire's iconic countryside, this home offers not just a place to live, but a chance to immerse yourself in the beauty and tranquillity of a world-renowned location. With the prehistoric stone circle and picturesque village of Avebury just a short stroll away, your surroundings will be as exceptional as your

home.

Whether you're seeking a peaceful retreat or a vibrant community setting, this park home presents a unique opportunity to enjoy the best of both worlds. Don't miss out on this rare chance to own a piece of Avebury's rich heritage combined with contemporary living.

Schedule your viewing today and experience the charm and convenience of this residential park home for yourself!



## **Viewings**

By appointment through Alan Hawkins Property Sales. Tel: 01793 840 222

## **Council Tax: Wiltshire Council**

Tax Band A For information on tax banding and rates, please call Wiltshire Council

## **Tenure**

Mobile Homes Act 1983

## **Pitch Fee**

**Ground Rent £198 pcm**







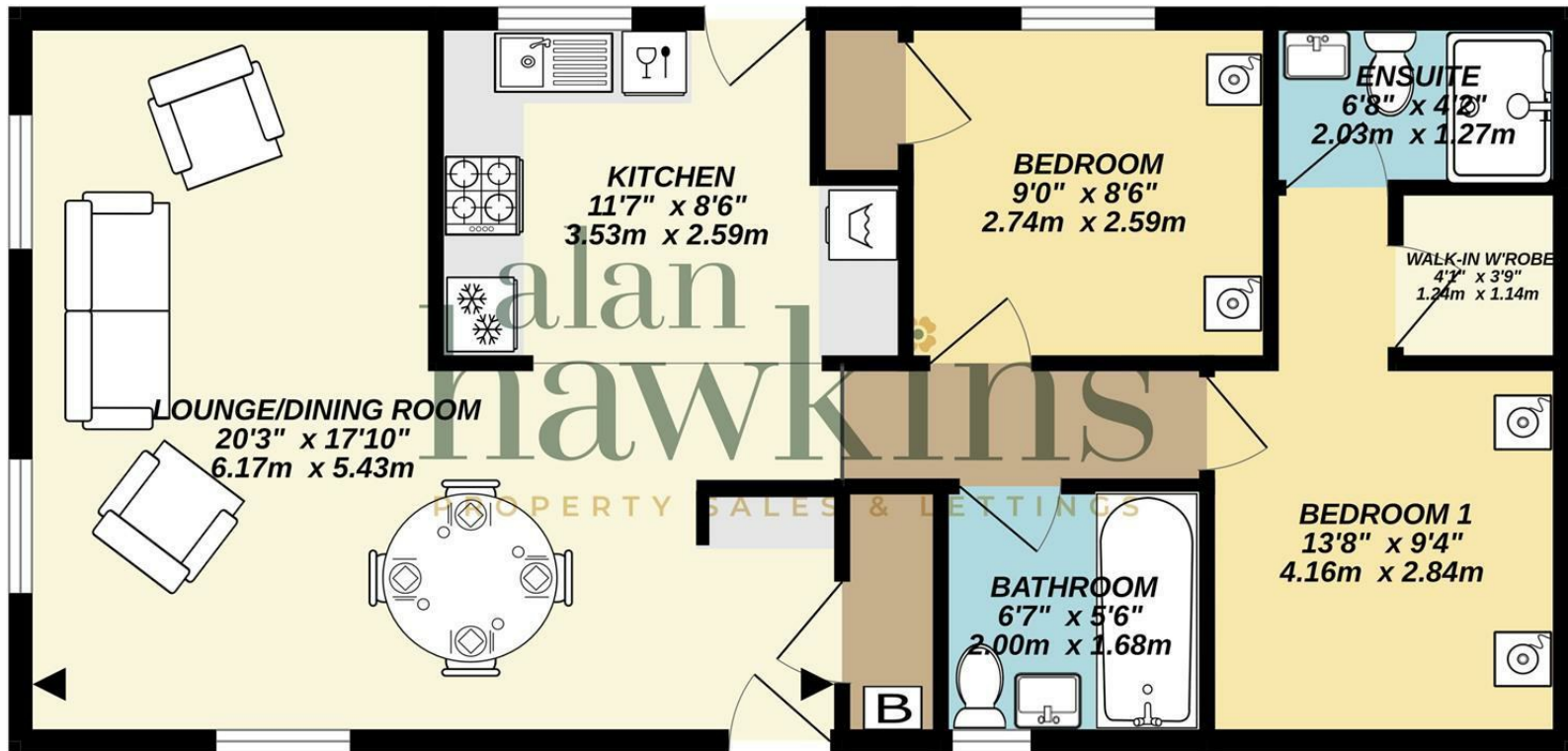








GROUND FLOOR  
676 sq.ft. (62.8 sq.m.) approx.



TOTAL FLOOR AREA : 676 sq.ft. (62.8 sq.m.) approx.  
Whilst every attempt has been made to ensure the accuracy of the floorplan contained here, measurements of doors, windows, rooms and any other items are approximate and no responsibility is taken for any error, omission or mis-statement. This plan is for illustrative purposes only and should be used as such by any prospective purchaser. The services, systems and appliances shown have not been tested and no guarantee as to their operability or efficiency can be given.  
Made with Metropix ©2024

**Disclaimer:** These particulars are believed to be correct but their accuracy cannot be guaranteed. They do not form part of the contract and Alan Hawkins Estate Agents are not to be held liable in any way for any mistakes or inaccuracies in these particulars. The agents have not tested any apparatus,

equipment, fixtures or services and so cannot verify they are in working order, or fit for their purposes, neither have the agents checked the legal documents to verify the freehold/leasehold status of the property. The buyer is advised to obtain verification from their solicitor/surveyor.

# alan hawkins

PROPERTY SALES & LETTINGS

01793 840 222 | [alanhawkins.co.uk](http://alanhawkins.co.uk)

**Alan Hawkins**

26/26a High Street,  
Royal Wootton Bassett  
Wiltshire, SN4 7AA



 safeagent

