

Gemini Park, Manor Way, Borehamwood

£349,950 (Leasehold)

VILLAGE
ESTATES



This modern 2 DOUBLE BEDROOM apartment is just a short stroll from the bustling Borehamwood high street with an array of fantastic amenities including the mainline station, shopping park, Tesco, recreational facilities and several bars & restaurants. Situated on the second floor of the popular Gemini Park development this desirable corner plot apartment boasts two private balconies, allocated underground parking and lift access. Internally the apartment has been beautifully maintained by its current owner and comprises of a large open plan kitchen/dining/living area, two double bedrooms, family bathroom and entrance hall with ample storage.

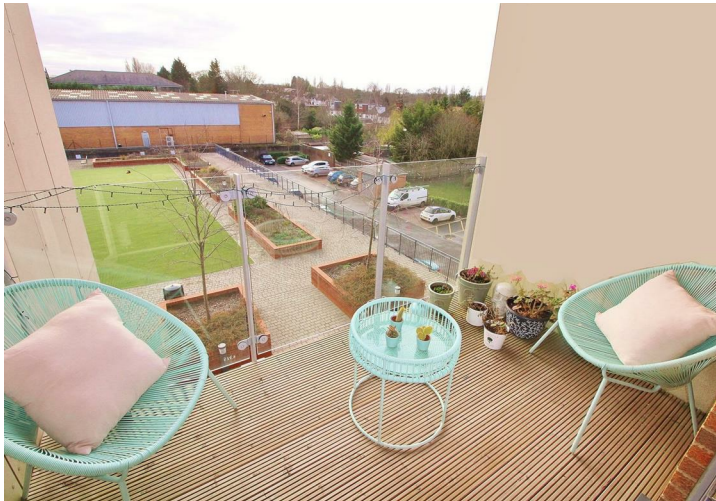
020 3764 2222
www.village-estates.co.uk



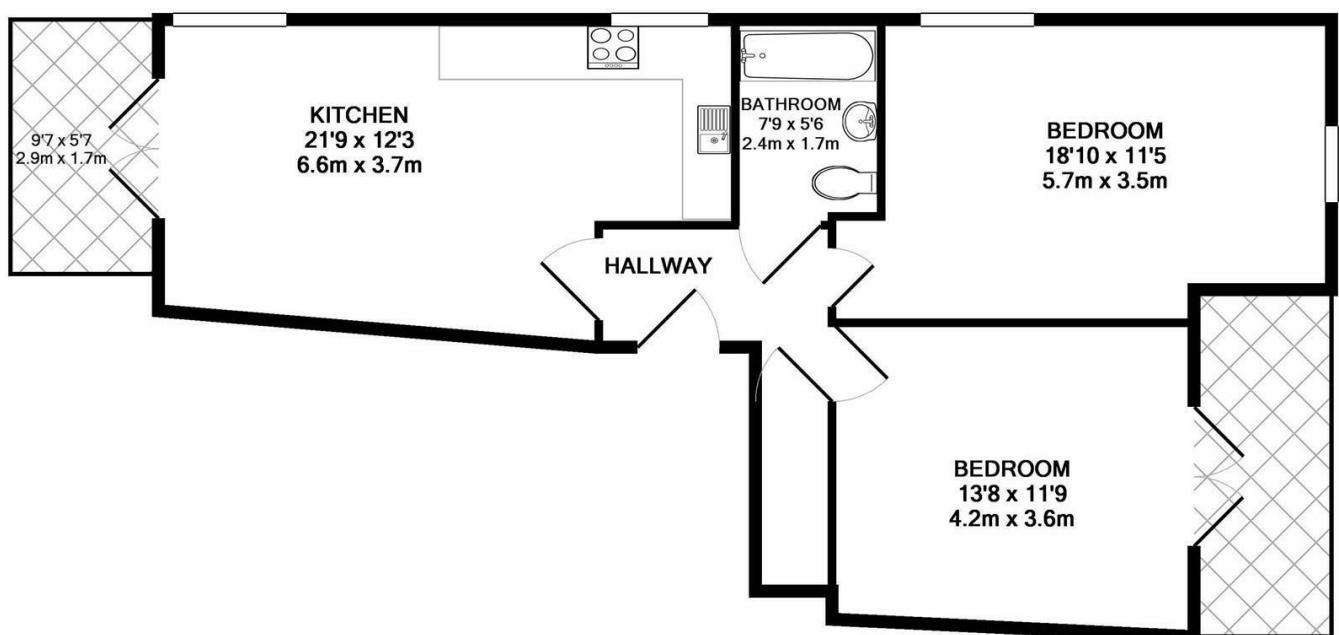
Village Estates
The Corner Shop High Street, Elstree
Herts WD6 3BY

Important Note: These particulars do not form part of any contract. All measurements are approximate and should not be relied upon. All prices quoted are strictly subject to contract.









TOTAL APPROX. FLOOR AREA 730 SQ.FT. (67.8 SQ.M.)

Whilst every attempt has been made to ensure the accuracy of the floor plan contained here, measurements of doors, windows, rooms and any other items are approximate and no responsibility is taken for any error, omission, or mis-statement. This plan is for illustrative purposes only and should be used as such by any prospective purchaser. The services, systems and appliances shown have not been tested and no guarantee as to their operability or efficiency can be given

Made with Metropix ©2017



Available on the
App Store



ANDROID APP ON
Google play

Energy Efficiency Rating		
	Current	Potential
Very energy efficient - lower running costs		
(92 plus) A		
(81-91) B		
(69-80) C		
(55-68) D		
(39-54) E		
(21-38) F		
(1-20) G		
Not energy efficient - higher running costs		
England & Wales	EU Directive 2002/91/EC	